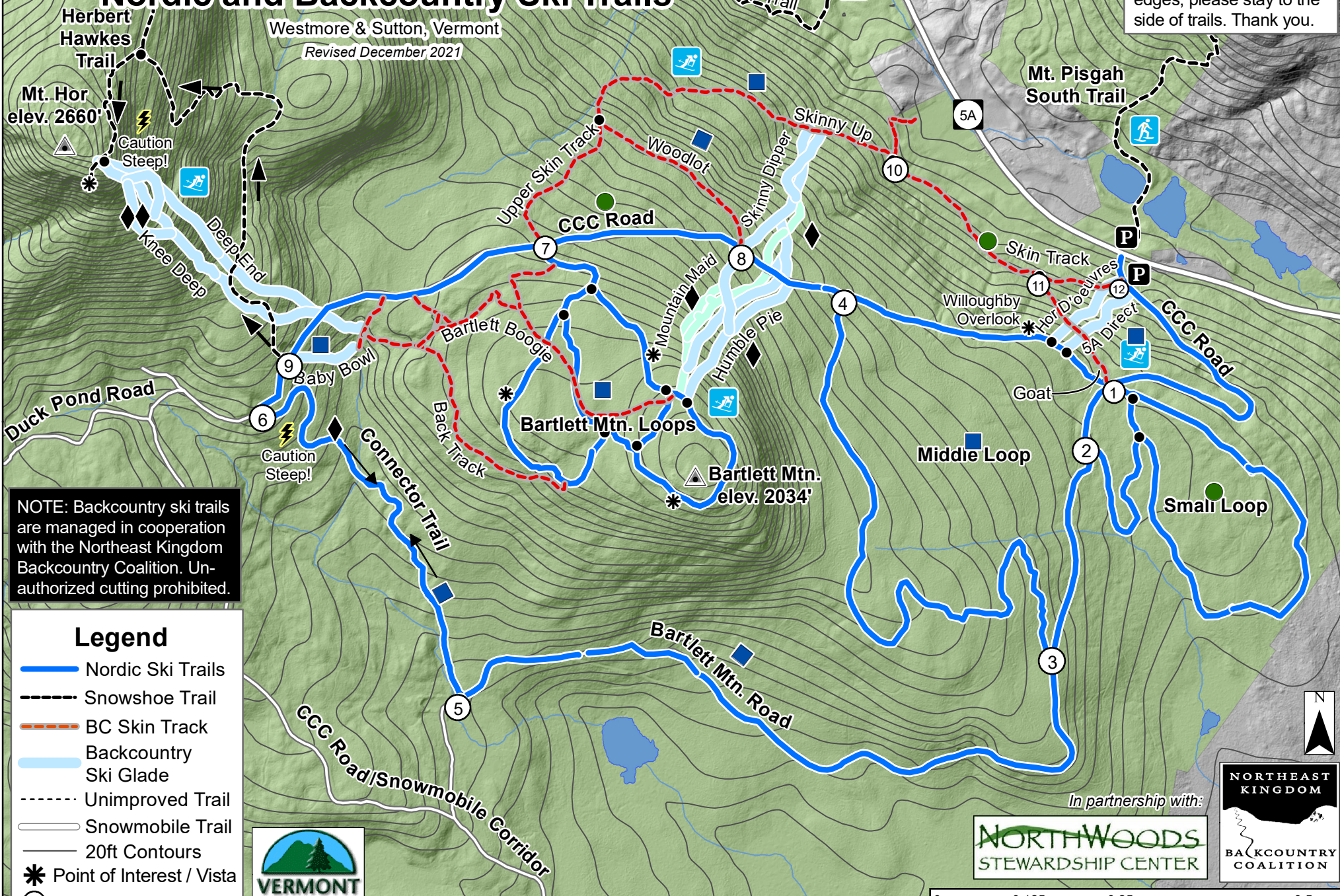


Willoughby State Forest Nordic and Backcountry Ski Trails

Westmore & Sutton, Vermont
Revised December 2021

Walkers and Snowshoers:
To preserve the groomed trail surface and help pack edges, please stay to the side of trails. Thank you.



NOTE: Backcountry ski trails are managed in cooperation with the Northeast Kingdom Backcountry Coalition. Unauthorized cutting prohibited.

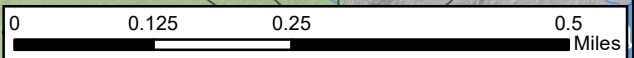
Legend

- Nordic Ski Trails
- BC Skin Track
- Backcountry Ski Glade
- Unimproved Trail
- Snowmobile Trail
- 20ft Contours
- * Point of Interest / Vista
- 7 Numbered Intersection



Revised by Luke O'Brien, Vermont Department of Forests, Parks & Recreation, 2021

In partnership with:
NORTHWOODS
STEWARDSHIP CENTER



Skier Responsibility Code

- * Be courteous to other visitors
- * Maintain control of your speed and direction at all times
- * Do not stop where you obstruct a trail or are not visible by others
- * Obey all signs and posted warnings
- * In the event of an injury, please call 9-1-1

Be Prepared

There is **no ski patrol** sweep of the trails and conditions can change abruptly, especially in winter. If you encounter an injured skier, carefully note your location and call 9-1-1. There is limited cell service on most trails.

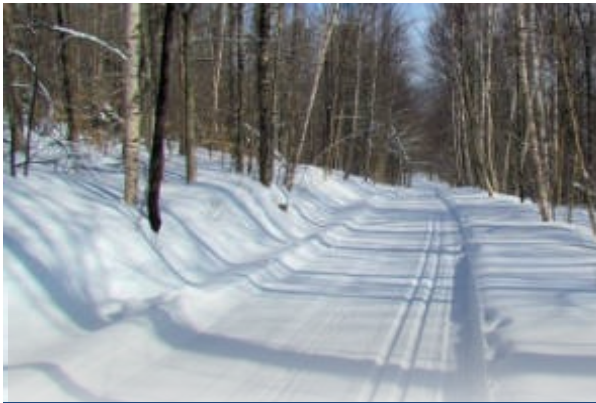
Snowshoers, Hikers & Walkers

Please do not track up the middle of the trails! Walkers and Snowshoers can help improve conditions by staying on the sides of the trail and packing the snow where the groomer doesn't reach. This will also preserve the groomed and tracked surfaces for skate and classic skiing.

Hikers and dog-walkers are encouraged to use the Mt. Pisgah or South Shore Trails located nearby along Route 5A. Per Westmore Ordinance, dogs must be kept under control and on a leash.

Please clean up after your dog.

Thank you for helping maintain the quality of the groomed trails!



Winter Maintenance

The Willoughby ski trails are maintained through an agreement between Vermont FPR and the non-profit **NorthWoods Stewardship Center** (NWSC). Grooming is supported by State trail grants and private donations. *Please Donate at the trailhead kiosk or at northwoodscenter.org.*

Backcountry Skiing

The Northeast Kingdom Backcountry Coalition (NEKBC) helps maintain backcountry terrain in WSF, including gladed ski lines and skin tracks. Please use designated skin tracks (please no boot tracking) and be aware of potential hazards.

Ski the Trees & Save the Forest!

Absolutely No Unauthorized Cutting!

To get involved, visit nekbc.org.

For Information

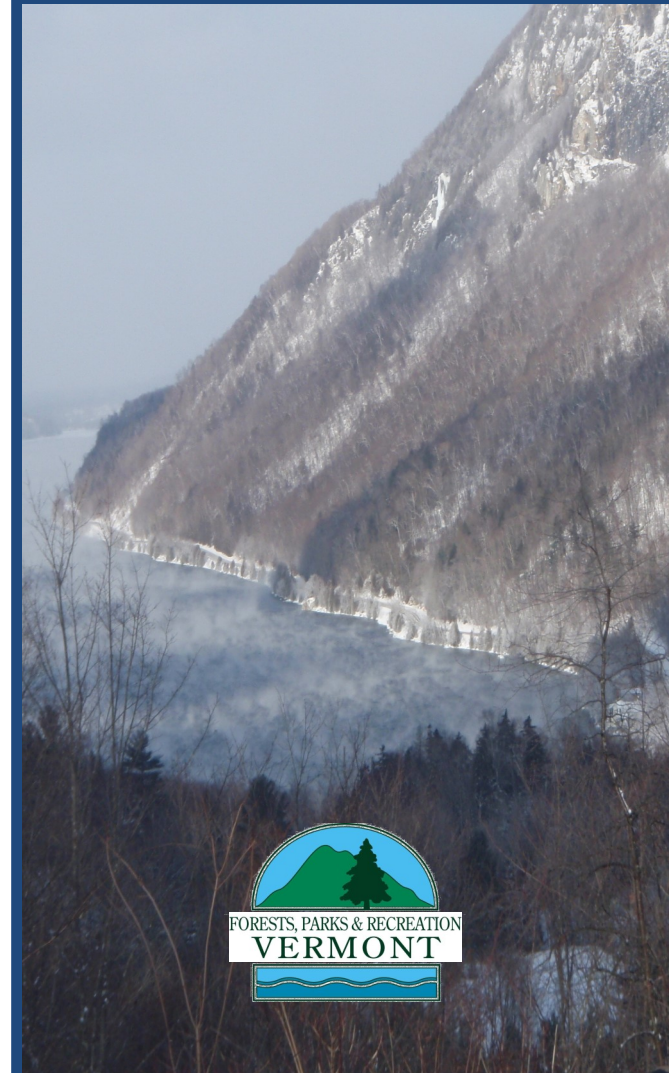
trailhub.org or northwoodscenter.org

ski@northwoodscenter.org

(802) 723-6551 (NWSC)

(802) 751-0110 (FPR)

Willoughby State Forest Vermont



Groomed Nordic Ski Trails
Backcountry Terrain
Snowshoeing