

# Birdseye Wildlife Management Area

Last edited: 9/30/22



## General Description

Birdseye Wildlife Management Area (formerly Bird Mountain WMA) is comprised of 3,640 acres of land owned by the State of Vermont and managed by the Vermont Fish & Wildlife Department. The WMA is located approximately six miles west of the city of Rutland. It lies within the towns of Ira, Castleton and Poultney. Birdseye Road and Finel Hollow Road offer pull-offs for parking.

## History

The Vermont Fish & Wildlife Department purchased this land from H. Tyler Benner, Jr. in 1976. In 2013, 2,870 acres were added to Birdseye, resulting in the second largest unfragmented forest block in the Taconic Range. The WMA's name is derived from the prominent 2,216-foot rock outcrop known as "Birdseye Mountain." A portion of this mountain is publicly owned and occupies the northeast corner of the WMA.

## Habitat Features

Birdseye WMA is situated within the Western Foothills physiographic region, which has one of the mildest climates in the state. The topography of the parcel ranges from fairly level former pasture and farmland to the steep talus slopes of Birdseye Mountain. The mountain overlooks a mix of hardwoods that include red and sugar maple, yellow and paper birch, beech and aspen that covers about 70% of the WMA. The remainder is comprised of white pines and remnant fields. One major watercourse, Gulley Brook, drains the WMA with several smaller feeder streams traversing the parcel. The brook has great aesthetic value and is worth the short hike to see it.

## Common Fish and Wildlife

**Mammals** White-tailed deer is an important game species, and Birdseye WMA provides critical deer wintering habitat. The WMA is excellent habitat for gray squirrels and supports a large population. Cottontail rabbits are likely to be found in the more open areas where the brush provides more cover and browse. Coyotes, fishers, red fox and raccoons can be found throughout the WMA. Mink are more likely to be found along Gulley Brook or the smaller feeder streams.

**Birds** The peregrine falcon, which is featured on the state's conservation license plate, is the fastest bird in the world and is capable of diving in excess of 200 miles per hour. These amazing birds were known to have nested previously on the steep rocky ledges of Birdseye Mountain. The historic nesting was one reason for the department's purchase of this parcel. The peregrine falcon population crashed in the 1960's and the last known sighting of a wild adult peregrine

at a northeastern nesting site occurred in Vermont in 1970. The peregrine population was entirely wiped out in Vermont and throughout the Northeast. Their demise was due to the effects of the pesticide DDT, which thinned eggshells to the point of breaking under the weight of the parents. The peregrine falcon was listed as both a state and federal endangered species.



Birdseye Mountain is once again home to nesting peregrine falcons. Doug Blodgett, VFWD photo.

With the banning of DDT in 1972 and the help of an intense captive breeding program, peregrine falcons have made a dramatic recovery. The Vermont Fish & Wildlife Department, in cooperation with the Peregrine Fund and the Vermont Institute of Natural Science, released 93 young birds between 1982-87. By 1989, Birdseye Mountain once again had peregrine falcons nesting on its rocky ledges. The state's population has steadily increased, and in 2002 reached a high of 30 breeding pairs. They were removed from the federal endangered species list in 1999 and the state endangered species list in 2005.

The relatively diverse habitats on the parcel provide opportunities to encounter numerous other species of birds. The abundance of early successional habitat preferred by ruffed grouse and woodcock accounts for their relatively high numbers. Turkeys are often found on Birdseye WMA, which is in the heart of prime turkey range. Hiking through the various habitats provides opportunities for the bird watcher to encounter numerous songbird species.

**Reptiles and Amphibians** Gulley Brook and the other moist areas are host to a number of amphibians including the vocal green frog, and the less conspicuous spring and northern dusky salamanders. Redback and two-lined salamanders are likely to be found under logs in damp areas of the forest. Elusive garter snakes also might be found in this WMA.

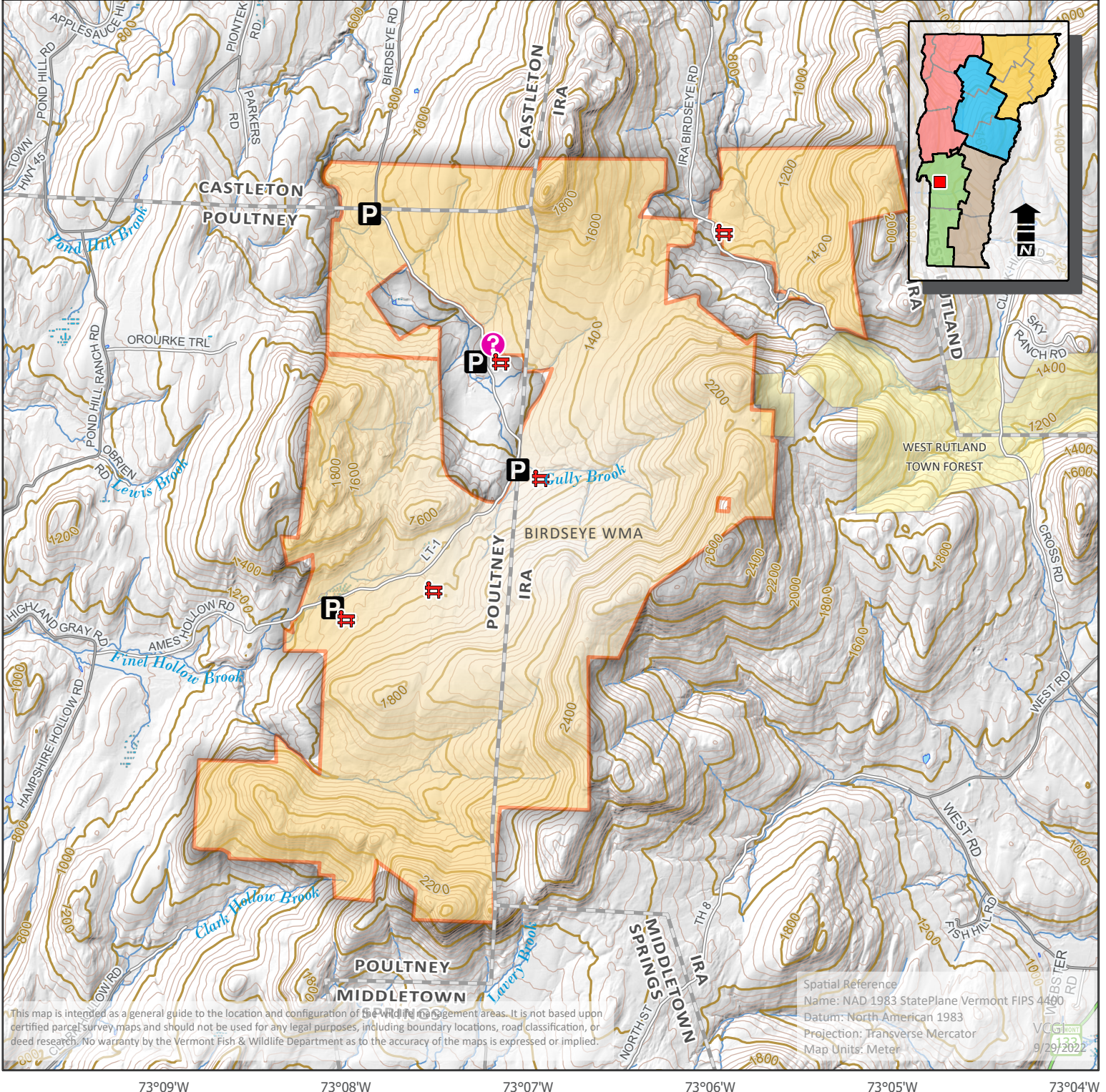
**Fish** Gulley Brook eventually flows into the Castleton River and shares many of its fish species. Most notably are the brown and brook trout that can be found in the good spawning grounds of Gulley Brook.

Birdseye WMA is open to regulated hunting, trapping, fishing, hiking and wildlife viewing.



# Vermont Fish & Wildlife Department

## Birdseye Wildlife Management Area



**Birdseye WMA** **Map Number: 76**

Parking	Shooting Range	Fishing Access	Trails	Refuge (no public access)	Federal Land
Boat Ramp	Wildlife Viewing Area	Visitor Information	Town Boundary	Special hunting/trapping restrictions	State Land
Cartop Access	Campground	Gate	Wildlife Management Area	Streambank Management Area	Town Land
Park Office	Vista	Rail Lines	WMA Hunting Rights Only	Controlled Hunting Area	