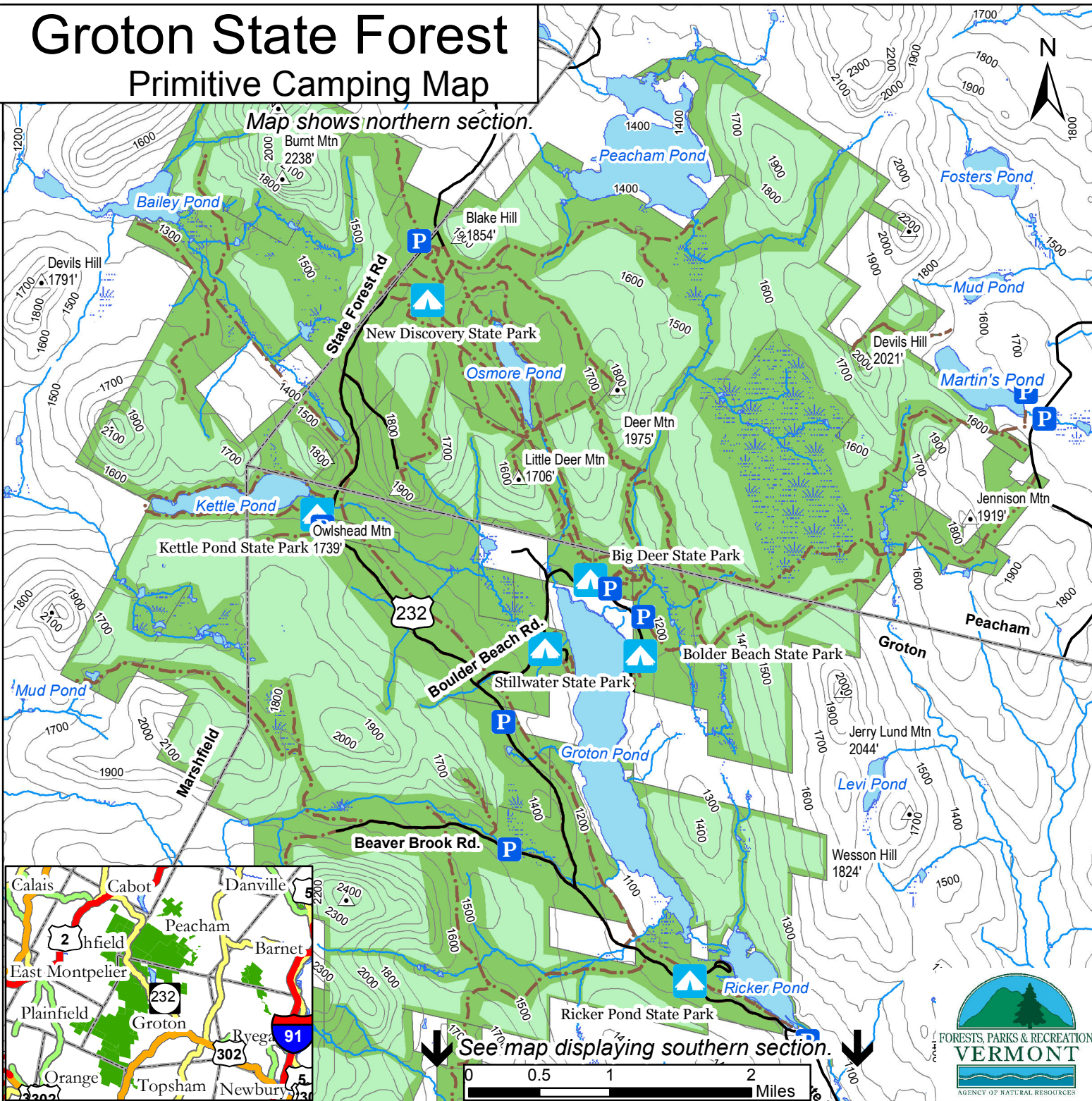


Groton State Forest

Primitive Camping Map

Map shows northern section.



See map displaying southern section.

Primitive Camping Guidelines

Camp 1000 feet from roads.

Camp 200 feet from trails or property line.

Camp 100 feet from stream or waterbody.

Carry out what you carry in.

Only dead and downed trees or branches may be used for firewood.

No more than three consecutive nights in the same area.

Leave no trace of your campsite or fire pit.

Camping above 2500 feet in elevation is prohibited.

One responsible adult for every four campers under the age of fourteen is required.

Groups of eleven or more individuals must obtain a permit from the District Office.

1229 Portland Street - Suite 201
St. Johnsbury, Vermont 05819-2099
(802) 751 - 0110

Legend

- | | |
|------------------------|---------------|
| Road | State Park |
| Stream | Parking |
| Waterbody | Summit |
| Wetland | Trails |
| Elevation >2500ft | Hike |
| Primitive Camping Area | Bike |
| State Forest | X-Ski |
| 100ft Contour Interval | VAST |

