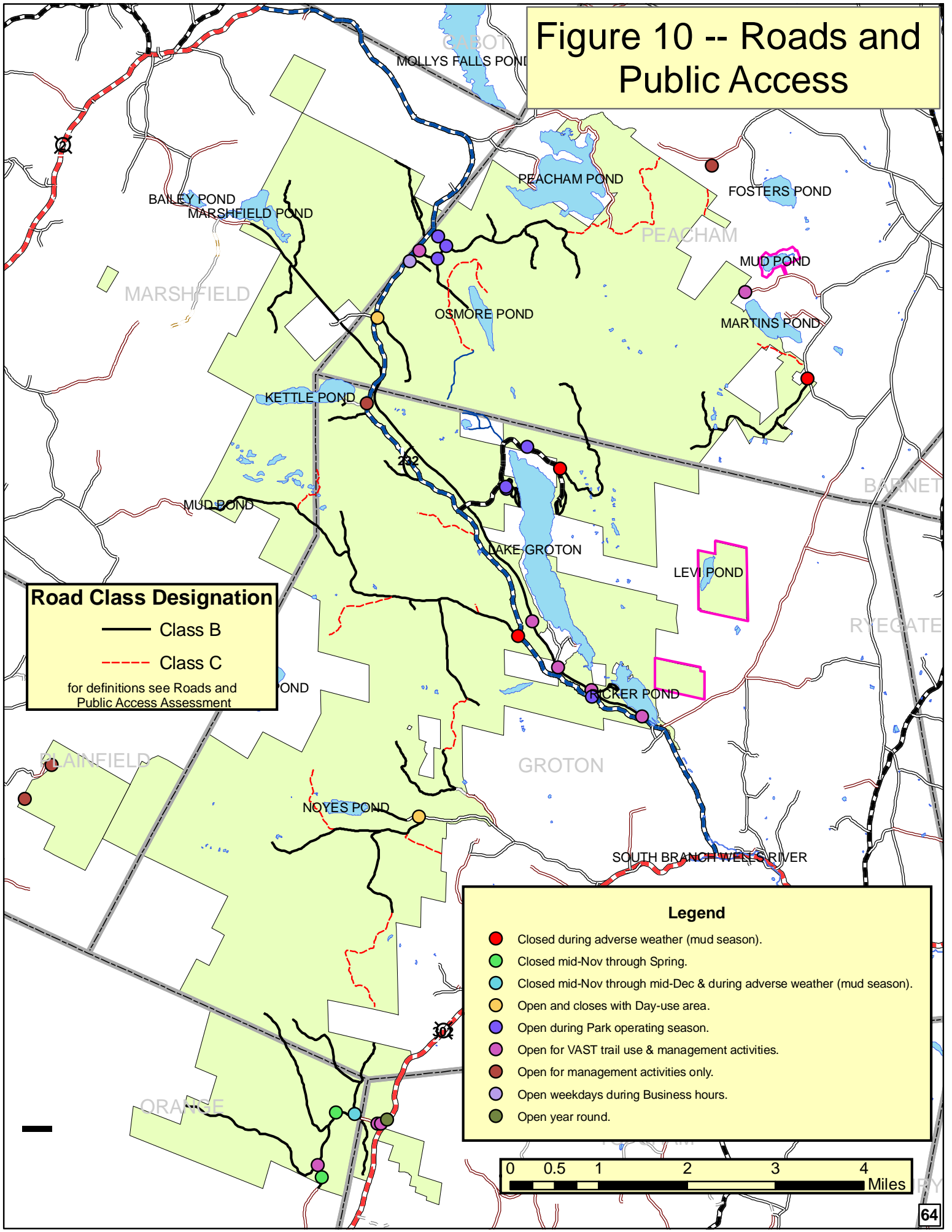


Figure 10 -- Roads and Public Access



Road Class Designation

- Class B
- - - Class C

for definitions see Roads and Public Access Assessment

Legend

- Closed during adverse weather (mud season).
- Closed mid-Nov through Spring.
- Closed mid-Nov through mid-Dec & during adverse weather (mud season).
- Open and closes with Day-use area.
- Open during Park operating season.
- Open for VAST trail use & management activities.
- Open for management activities only.
- Open weekdays during Business hours.
- Open year round.

0 0.5 1 2 3 4 Miles