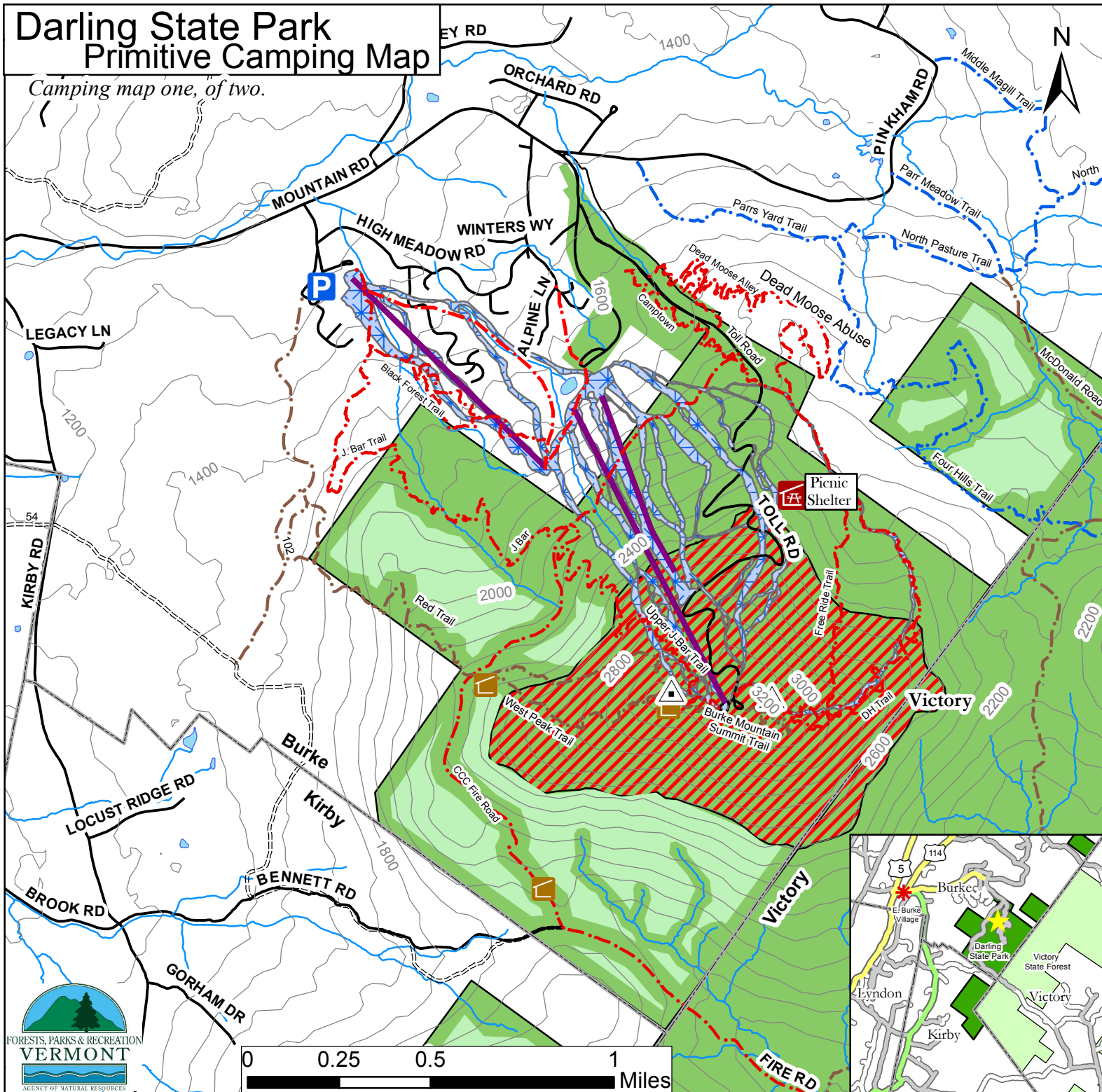


Darling State Park Primitive Camping Map

Camping map one, of two.



Primitive Camping Guidelines

Primitive Camping
Guidelines

Camp 1000 feet
from roads.

Camp 200 feet from
trails or property line.

Camp 100 feet from
stream or waterbody.

Carry out what you carry in.

Only dead and downed
trees or branches may
be used for firewood.

No more than three
consecutive nights
in the same area.

Leave no trace of
your campsite or fire pit.

Camping above 2500 feet
in elevation is prohibited.

One responsible adult for
every four campers under the
age of fourteen is required.

Groups of eleven or more
individuals must obtain a
permit from the District Office.

374 Emerson Falls Road, Suite 4
St. Johnsbury, VT 05819
(802) 751 0110

Legend

- Lean-to
- Road
- Stream
- Waterbody
- Wetland
- Elevation >2500ft
- Primitive Camping Area
- Darling State Park
- 100ft Contour Interval

- Parking Area
- Summit
- Trails**
 - Hike
 - Bike
 - X-Ski
 - VAST
 - Ski Lift
 - Ski Trail

Capobianco 2012