

Wildland Fire Equipment Products from DLA



We are proud to present this special catalog spotlighting wildland fire equipment available from DOD EMALL. From hand tools to protective gear, DOD EMALL offers a variety of products that carry our service guarantees:

- Easy Requisitions – See It. Buy It. Get It
- Flexible – Featuring Multiple Ordering Options
- Reliable – Delivering the Products You Need, Where You Need Them
- Anywhere – Assuring Global Delivery
- Anytime – Supporting 24/7 Purchasing
- More – Offering Extensive Product Selection
- Safe – Providing Easy Compliance

The items in this publication are also available online. Visit us at <https://dod.emall.dla.mil/>



Contents

About This Catalog 2

Wildland Fire Equipment

Hand Tools 5

Sheaths 6

Handles and Handle Wedges 6

Hoses and Gaskets 7

Water-Handling Accessories 8

Pumps and Accessories 12

Chainsaw Accessories 14

Fuel Storage 15

Batteries 15

Headlamps and Lightsticks 16

First Aid 16

Personal Protection 18

Packs and Accessories 23

Canteens, Water Bags and Accessories 24

Food-Handling Equipment 26

Sleeping Bags and Accessories 26

Personal Grooming Aids 28

Packaging Material 28

Pails 30

Weather Gear 30

Ignition Devices 31

Aviation Equipment 32

Marking Material 32

Incident Sign Kit Components 33

General Information

National Fire Cache System 34

Requisitioning from the Defense Logistics Agency 36

Federal Customers 36

State and Local Customers 36

DLA Customer Assistance Representatives 36

DLA Wildland Fire Program Points of Contact 37

Additional DLA Items 37

Indexes

NFES Index (NSN Cross-Reference) 39

Alphabetical Index 51

NSN Index 53

About This Catalog

This Wildland Fire Equipment Catalog is the basic supply publication for use by the U.S. Forest Service (USFS), Bureau of Land Management (BLM), Bureau of Indian Affairs (BIA), U.S. Fish & Wildlife Service (USF&WS), National Park Service (NPS), and other Forest Service–sponsored participants in the government-wide wildland firefighting effort.

This catalog contains descriptions and ordering data for wildland fire protection equipment and supplies managed by DLA. Each item is indexed alphabetically by name and numerically by National Stock Number (NSN) and National Fire Equipment System (NFES) number.

Your suggestions for improving this catalog are invited at all times. Items will be deleted or added as needed, provided they meet the criteria established by DLA, USFS and BLM. Questions or comments should be directed to the DLA WFPP email address at DLAWFPP@dla.mil

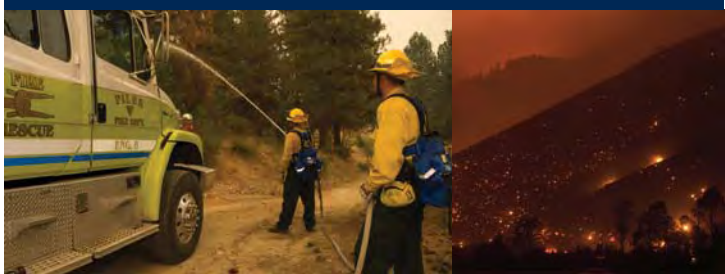


Specification References

The specifications cited in catalog descriptions may undergo a series of revisions (indicated by successive suffix letters) to keep current with industry changes and agency needs. Because it is not feasible to show the latest revision on the catalog publication date, only the basic specification is referenced in this catalog. Although NSN items are always procured under the latest edition of a specification in effect at the time of procurement, on-hand stock that was procured under a previous edition of a specification will be issued until the supply is depleted.

The National Stock Number

The National Stock Number (NSN) is used for requisitioning, new procurements, existing contracts, shipments, shippers' invoices, payments, cataloging, stock records, etc. Accordingly, the items in this catalog are identified by 13-digit NSNs. To obtain items in this catalog, please visit <https://dod.emall.dla.mil/> or call 1-877-DLA-CALL (352-2255).



About This Catalog



Prices

The prices reflected in this catalog are as of May 1, 2015.

The prices in the publication are established each year as of October 1st. In most cases, the prices remain in effect through September 30th of the following year. However, from time to time, it is necessary to make changes without notice. This happens when new contract prices are significantly higher or lower in which case adjustments must be made. To obtain the most current prices, please check the price in DoD EMALL at <https://dod.emall.dla.mil>, or call the DLA LNO or Troop Support Fire Coordinator. To obtain a PDF copy of this catalog, contact DLA WFPP at DLAWFPP@dlamail.



For the latest information and news about the Wildland Fire Program, visit our website at <https://dod.emall.dla.mil/>.

Unit of Issue Reference

BE	Bale	LG	Length
BD	Bundle	OZ	Ounce
BK	Book	PD	Pad
BX	Box	PG	Package
CL	Coil	PR	Pair
DZ	Dozen	QT	Quart
EA	Each	RO	Roll
HD	Hundred	SL	Spool
KT	Kit	YD	Yard
FT	Foot		

Note: The name or nomenclature used in this publication may not be the Approved Item Name recorded in the Federal Catalog System. In many cases, a name more oriented to our customers is provided.

Icon Key

The following is a list of icons used in this publication and the information each icon represents:



Key information to help buying decisions.



Product has been certified to meet or exceed the U.S. Environmental Protection Agency Recovered Material Advisory Notice (RMAN) standard for recovered materials as specified in the Resource Conservation and Recovery Act Section 6002 Comprehensive Procurement Guideline.



Product is part of a specific standard pack. Standard pack is a guide to how many items are packed in a single case. Standard pack does not mean “minimum order.”



Product with biodegradable packing materials as required by U.S. Navy’s Plastics Removal in Marine Environments program



Product is free of cadmium, lead and/or mercury, and chemicals on the list of “31 Priority Chemicals.”



Material Safety Data Sheet (MSDS) is available.



Contact us for more information.

Hand Tools

Combination Tool, Fire Fighter's (Fire Line Combination Tool)



Combination pick and shovel can be folded for easy transport. Similar to an army entrenching tool and features a 41" handle and serrations on shovel edges for cutting light brush. Intended for use on wildland fire-lines and for general forest work and trail maintenance. Forest Service Spec 5100-325. (NFES #1180)

For replacement tool handle, see NSN 5120-01-296-3592.

■ Std. pack: 10

5120-01-240-2120

EA \$69.72

Mattock (Pulaski Tool)



This ax-and-hoe combination tool is designed for fire-line digging and chopping. Cutting edges: 3-3/8" (hoe); 4-1/2" (ax); handle 36" long. Forest Service Spec 5100-355. (NFES #0146)

For replacement tool handle, see NSN 5110-01-137-7507; for Pulaski Tool Sheath, see NSN 8465-01-067-9999.

■ Std. pack: 10

5120-00-293-3467

EA \$55.46

Rake, Forest Fire (McLeod Tool)



Fire-line digging tool is a rake-and-hoe combination. Handle is 48" long. Forest Service Spec 5100-353. (NFES #0296)

For McLeod Tool Sheath, see NSN 8465-01-136-4718.

■ Std. pack: 10

4210-00-203-3512

AbilityOne

Width: 11"

EA \$87.32

Rake, Forest Fire (Collapsible Firefighting Rake)



Collapsible metal rake is designed for fire-line construction. Features stainless steel tines that extend to 16" in width. Features a foam-grip handle. Lengths: 59-1/2" (extended) and 49-2/5" (collapsed). Weight: 3.3 lbs. REC Drawing No. 90-5700C. (NFES #0659)

■ Std. pack: 10

4210-01-387-1392

EA \$93.82

Rake, Forest Fire (Forest Fire Rake)



Tool is designed for fire-line digging. Features triangular cutting heads on a 12"-wide hoe-type frame. Consists of four mowing- machine cutter blades riveted to a steel frame. Straight handle is 52" long. Forest Service Spec 5100-284. (NFES #1807)

For Fire Rake Tool Sheath, see NSN 8465-01-592-1365.

■ Std. pack: 10

4210-00-540-4512

AbilityOne

EA \$78.25

Shovel, Hand (Forest Fire Shovel)



Designed especially for fighting wildland fires. Features solid shank and straight handle. Handle is 34" long. Forest Service Spec 5100-326. (NFES #0171)

For Shovel Tool Sheath, see NSN 8465-01-136-4719.

■ Std. pack: 10

5120-00-965-0609

AbilityOne

EA \$57.77

Gage, Sharpening (Sharpening Gauge)

This highly portable gauge makes easy work of refurbishing and inspecting fire tools in the shop or the field. Contains guides for axes, shovels, Pulaski tools, combination tools and McLeod tools. Aluminum construction is 7.5 x 20.5 x 0.3 cm in size. Instructions clearly printed on both sides. MTDC Drawing 846. (NFES #0510)



■ Std. pack: 10 or 100

5210-01-324-2776

EA \$38.42

Extinguisher, Fire (Fire Extinguisher)



Designed for extinguishing small fires. Ratings are based on UL 711 testing, which uses the following classes: Class A: Wood and paper fires; Class B: Flammable liquid fires; Class C: Can be used in the presence of charged electrical circuits. Weights noted are the approximate amount of extinguishing agent with which charged extinguishers are supplied. Please note that multi-purpose phosphate and bicarbonate leaves a powdery residue that can damage delicate instruments.

Dry chemical for class A:B:C: Type fires (multi-purpose phosphate).

Rating is 20A:120B: C: with a 20-lb. charge. Has stored pressure and is refillable. Wall-mounting bracket included. (NFES #0307)

4210-00-889-2492

EA \$115.58

Sheaths

Sheath, Pulaski Tool (Pulaski Tool Sheath)

Molded polyurethane plastic sheath effectively covers the sharp edges of a Pulaski tool. Sheath consists of a buckle-and-strap section and rivet holes for fasteners. Sections are fastened together with oval-head rivets and washers. Color number 12199 of FED-STD-595C. Forest Service Spec 5100-316. (NFES #0257)

For use with Pulaski Tool NSN 5120-00-293-3467.

■ Std. pack: 10 or 100

8465-01-067-9999	AbilityOne	Orange	EA	\$4.20
------------------	------------	--------	----	--------



Sheath, Shovel Hand (Shovel Tool Sheath)

Molded polyurethane plastic sheath accommodates a hand shovel and protects tool and user. Riveted with washers on both sides. Color number 12199 of FED-STD-595C. Forest Service Spec 5100-316. (NFES #1853)

For use with Forest Fire Shovel NSN 5120-00-965-0609.

■ Std. pack: 10 or 100

8465-01-136-4719	AbilityOne	Orange	EA	\$3.59
------------------	------------	--------	----	--------



Sheath, McLeod Tool (McLeod Tool Sheath)

Molded polyurethane plastic sheath accommodates a McLeod tool. Helps keep edges sharp while protecting personnel. Riveted with washers on both sides. Color number 12199 of FED-STD-595C. Forest Service Spec 5100-316. (NFES #1854)

For use with McLeod Tool NSN 4210-00-203-3512.

■ Std. pack: 10 or 100

8465-01-136-4718	AbilityOne	Orange	EA	\$2.54
------------------	------------	--------	----	--------



Sheath, Fire, Rake, Plastic (Fire Rake Sheath)

Molded plastic sheath accommodates a fire rake. Riveted with washers on both sides. Color number 12199 of FED-STD-595C. Forest Service Spec. 5100-316. (NFES #0293)

For use with Fire Rake NSN 4210-00-540-4512.

8465-01-592-1365		Orange	EA	\$6.21
------------------	--	--------	----	--------



Handles and Handle Wedges

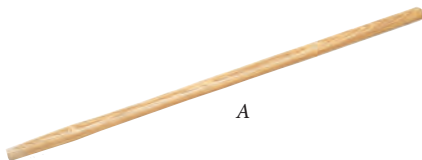
Handle, Replacement, Combi-Tool (Tool Handle)

A. Hardwood handle, tapered working end fits metal ferrule with hinged tool and locking nut. Forest Service Drawing MTDC 736. (NFES #1168)

Replacement handle for the Fire Line Combination Tool NSN 5120-01-240-2120.

■ Std. pack: 12

5120-01-296-3592		Length: 41"	EA	\$20.42
------------------	--	-------------	----	---------



Handle, Pulaski Tool (Tool Handle)

B. Solid hickory handle. Forest Service Drawing MTDC 632. Forest Service Spec 5100-355. (NFES #1857)

Replacement handle for Pulaski Tool NSN 5120-00-293-3467.

■ Std. pack: 12

5110-01-137-7507		Length: 36"	EA	\$9.06
------------------	--	-------------	----	--------



**For your convenience, this catalog
is also available in electronic form.
To receive a PDF copy contact DLA WFPP at
DLAWFPP@dla.mil**

Hoses and Gaskets

Hose Assembly, Nonmetallic, Fire Fighting (Synthetic Fire Hose)



Lined, synthetic, woven-jacket hose is lightweight with aluminum rocker lug couplings. Working pressure: 450 psi. Forest Service Spec 5100-187.

A. Type I, standard synthetic hose.

This 1" diameter hose features 1", 11-1/2 NPSH thread couplings. Weight: 9.38 lbs. (NFES #1238)

■ Std. pack: 2

4210-01-166-8122	AbilityOne	White	LG(contains 100 FT)	\$133.73
------------------	------------	-------	---------------------	----------

This 1-1/2" diameter hose features 1-1/2", 9 NPSH thread couplings. Weight: 15.88 lbs. (NFES #1239)

■ Std. pack: 2

4210-01-165-6597	AbilityOne	White	LG(contains 100 FT)	\$166.30
------------------	------------	-------	---------------------	----------

B. Type II, abrasion- and heat-resistant synthetic hose with external elastomeric coating.

This 1" diameter hose features 1", 11-1/2 NPSH thread couplings. (NFES #0932)

■ Std. pack: 2

4210-01-526-3000	AbilityOne	Yellow	LG(contains 100 FT)	\$147.76
------------------	------------	--------	---------------------	----------

This 1-1/2" diameter hose features 1-1/2", 9 NPSH thread couplings. (NFES #0933)

■ Std. pack: 2

4210-01-526-2977	AbilityOne	Yellow	LG(contains 100 FT)	\$190.90
------------------	------------	--------	---------------------	----------

Hose Assembly, Nonmetallic Synthetic (Synthetic Garden Hose)

Lightweight hose features a woven synthetic jacket and is lined. The 5/8" - diameter hose features 3/4", 11-1/2 NH threaded coupling (standard garden hose threads). Operating pressure is 200 psi. To be used for mop-up operations, pumper protection and miscellaneous applications. (NFES #1016)



This is a component of Mop-Up Kit NSN 4210-01-321-4206.

■ Std. pack: 2

4210-01-167-1061	AbilityOne		LG(contains 100 FT)	\$36.28
------------------	------------	--	---------------------	---------

Band, Retaining Fire Hose (Fire Hose Retaining Band)

Rubber band for securing rolled fire hose. Length: 9-1/2"; Width: 1-3/8"; Thickness: 0.063". (NFES #0727)

■ Std. pack: 1



4210-01-529-8489		Red	BX(contains 325 EA)	\$138.78
------------------	--	-----	---------------------	----------

Hose Assembly, Nonmetallic, Fire Fighting (High-Pressure Fire Hose)

High-pressure fire hose features 1", 11-1/2 NPSH compression wedge couplings. Braided hose has a 3/4" inside diameter. Working pressure: 600 psi. Forest Service Spec 5100-185. (NFES #1220)

■ Std. pack: 2

4210-00-595-1838			LG(contains 50 FT)	\$302.62
------------------	--	--	--------------------	----------



Hose Assembly, Nonmetallic, Fire Fighting (Rubber Suction Fire Hose)

Suction fire hose with rocker-lug couplings is made of rubber and fabric with wire reinforcement. Forest Service Spec 5100-184. Couplings per Forest Service Spec 5100-108.



This 1-1/2" diameter hose features a 1-1/2", 9 NH threaded coupling. (NFES #1808)

■ Std. pack: 4

4210-00-889-1774			LG(contains 8 FT)	\$200.74
------------------	--	--	-------------------	----------

This 1-1/2" diameter hose features a 1-1/2", 9 NH threaded coupling. (NFES #0115)

■ Std. pack: 4

4210-00-889-1775			LG(contains 10 FT)	\$256.80
------------------	--	--	--------------------	----------

Gasket, Fire Hose (Fire Hose Gasket)

Designed for fire hose connections, this gasket is made of synthetic rubber and is circular in shape. Forest Service Spec 5100-190.



For 1" nominal waterway diameter. Has a 1-1/16" inside diameter and a 1-7/16" outside diameter. Thickness: 1/8". (NFES #0743)

This is a component of Mop-Up Kit NSN 4210-01-321-4206.

■ Std. pack: 20

5330-00-720-2621			PG(contains 10 EA)	\$6.18
------------------	--	--	--------------------	--------

For 1-1/2" nominal waterway diameter. Has a 1-9/16" inside diameter and a 2-1/16" outside diameter. Thickness: 1/8". (NFES #0254)

This is a component of Mop-Up Kit NSN 4210-01-321-4206.

■ Std. pack: 20

5330-00-239-1873	AbilityOne	Orange	PG(contains 10 EA)	\$1.31
------------------	------------	--------	--------------------	--------

For 2" nominal waterway diameter. Has a 2-1/16" inside diameter and a 2-3/8" outside diameter. Thickness: 1/8". (NFES #0742)

■ Std. pack: 20

5330-00-239-1875			PG(contains 10 EA)	\$2.13
------------------	--	--	--------------------	--------

For 2-1/2" nominal waterway diameter. Has a 2-9/16" inside diameter and a 3-3/16" outside diameter. Thickness: 3/16". (NFES #2326)

■ Std. pack: 20

5330-00-239-1877			PG(contains 10 EA)	\$2.21
------------------	--	--	--------------------	--------

Water-Handling Accessories

- Unless otherwise noted, the working pressure of all items under this heading is 600 psi.
- All flow rates are at 100 psi flowing pressure.
- 3/4" connections in this catalog use GHT (Garden Hose Thread) threads and 11-1/2 NH threads interchangeably; both designations are the same threads.
- This catalog includes some threads that are specific to the USDA Forest Service and do not follow the NFPA standard. We indicate the threads used on each item.
- The National Fire Protection Association (NFPA) standard calls for 3/4" and larger connections to be NH (national standard) threads. The wildland agencies have adopted this, except for 3/4" and 1" connections. The 3/4" connections shall be 3/4" 11-1/2 NH (rather than the NFPA standard of 3/4" 7.5 to 8 NH), and 1" shall be NPSH (straight pipe) thread.
- All female connections come with gaskets in place.
- All aluminum-threaded items are hard-coated for durability.

Coupling, Hose, Fire Fighting (Fire Hose Thread Adapter)

Thread adapter features aluminum couplings with a 600 psi test pressure. Forest Service Spec 5100-107.

1-1/2", 9 NH female and a 1-1/2", 11-1/2 NPSH male. (NFES #0006)

■ Std. pack: 10 or 60

4210-01-079-9284 EA \$7.88

1-1/2", 11-1/2 NPSH female and a 1-1/2", 9 NH male. (NFES #0007)

■ Std. pack: 10 or 60

4210-01-079-9283 EA \$6.65

Coupling, Hose, Fire Fighting (Fire Hose Double Female Connector)

Double female connection has aluminum couplings with a 600 psi test pressure. Forest Service Spec 5100-107.

Both ends are 1", 11-1/2 NPSH. Female, swivel couplings. (NFES #0710)

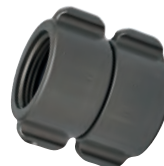
■ Std. pack: 10 or 60

4210-01-080-1457 EA \$13.31

Both ends are 1-1/2", 9 NH. (NFES #0857)

■ Std. pack: 10 or 60

4210-01-081-8749 EA \$31.53



Coupling, Hose, Fire Fighting (Fire Hose Double Male Connector)

Double male connection with center wrenching. Has aluminum couplings with a 600 psi test pressure. Measures 2" long overall. Forest Service Spec 5100-107.

Both ends are 1", 11-1/2 NPSH. (NFES #0916)

■ Std. pack: 10 or 60

4210-01-080-1458 EA \$6.06

Both ends are 1-1/2", 9 NH. (NFES #0856)

■ Std. pack: 10 or 60

4210-01-079-9285 EA \$17.71

Cap, Hose (Fire Hose Cap with Chain)

Aluminum fire hose threaded cap for use on fire equipment. Furnished with gasket and chain. 600 psi operating pressure. Forest Service Spec 5100-107.

1", 11-1/2 NPSH. (NFES #0732)

■ Std. pack: 10 or 60

4210-01-082-0575 EA \$6.73

1-1/2", 9 NH. (NFES #2210)

■ Std. pack: 10 or 60

4210-01-081-8751 EA \$24.92



Reducer, Hose, Fire Fighting (Fire Hose Reducer)

Reducers feature aluminum couplings with a 600 psi test pressure. Forest Service Spec 5100-107.

Includes a 1", 11-1/2 NPSH (female) and a 3/4" GHT (male). (NFES #0733)

This is a component of Mop-Up Kit NSN

4210-01-321-4206.

■ Std. pack: 10 or 60

4210-01-079-9286 EA \$6.30

Includes a 1-1/2", 11-1/2 NPSH (female) and a 1", 11-1/2 NPSH (male). (NFES #0418)

■ Std. pack: 10 or 60

4210-00-294-2648 EA \$7.60

Includes a 1-1/2", 9 NH (female) and a 1", 11-1/2 NPSH (male). (NFES #0010)

This is a component of Mop-Up Kit NSN 4210-01-321-4206.

■ Std. pack: 10 or 60

4210-00-975-2969 EA \$7.11

Includes a 2", 11-1/2 NPSH (female) and a 1-1/2", 9 NH (male). (NFES #0417)

■ Std. pack: 10 or 60

4210-01-521-1691 EA \$9.77

Includes a 2-1/2", 11-1/2 NPSH (female) and a 1-1/2", 9 NH (male). (NFES #2229)

■ Std. pack: 10 or 60

4210-01-081-0419 EA \$13.68

Includes a 2-1/2", 7-1/2 NH (female) and a 1-1/2", 9 NH (male). (NFES #2230)

■ Std. pack: 10 or 60

4210-01-508-8818 EA \$12.55



Increaser, Hose, Fire Fighting (Fire Hose Increaser)

Increaser features aluminum couplings with a 600 psi test pressure. Forest Service Spec 5100-107.

Includes a 3/4" GHT (female) and a 1" NPSH (male). (NFES #2235)

■ Std. pack: 10 or 60

4210-01-080-6531 EA \$6.10

Includes a 1", 11-1/2 NPSH (female) and a 1-1/2", 9 NH (male). (NFES #0416)

■ Std. pack: 10 or 60

4210-01-080-6532 EA \$7.91



Tee, Pipe to Hose, Fire Fighting (Hoseline Tee with Capped Male Branch)

Aluminum alloy tee issues 600 psi maximum operating water pressure. Forest Service Spec 5100-107.

Connects 1", 11-1/2 NPSH female threaded inlet to 1", 11-1/2 NPSH outlet, and 3/4" GHT branch with male threads. Male threaded 3/4" branch is closed with removable aluminum alloy cap. (NFES #1809)

■ Std. pack: 10 or 60

4210-01-081-0418 EA \$27.62

Connects 1", 11-1/2 NPSH female threaded inlet to two 1", 11-1/2 NPSH male threaded outlets. One outlet is closed with removable aluminum alloy cap. (NFES #2240)

■ Std. pack: 10 or 60

4210-01-080-1459 EA \$18.24

Connects 1-1/2", 9 NH female threaded inlet to 1-1/2", 9 NH outlet and 1", 11-1/2 NPSH branch with male threads. Branch is closed with removable aluminum alloy cap. (NFES #0731)

This is a component of Mop-Up Kit NSN 4210-01-321-4206.

■ Std. pack: 10 or 60

4210-01-080-1460 EA \$31.67



Tee, Pipe to Hose, Fire Fighting (Hoseline Tee with Valved Male Branch)

Aluminum alloy tee issues 600 psi maximum operating water pressure. Forest Service Spec 5100-107.

Connects 1-1/2", 9 NH female threaded inlet to 1-1/2", 9 NH discharge and 1", 11-1/2 NPSH branch with male threads. Branch output regulated with screw-type valve. (NFES #0230)

■ Std. pack: 10 or 60

4210-01-081-0417 EA \$49.48



Nozzle, Fire Equipment (Fire Hose Nozzle)

Barrel-type plastic polycarbonate nozzle adjusts from straight stream to fog to off. Rubber bumper and gasket included. Threads per Forest Service Spec 5100-190.

Female intake is 1", 11-1/2 NPSH, with an output capacity of 17 to 20 gpm. (NFES #0138)

■ Std. pack: 10 or 100

4210-00-085-2291 EA \$7.70

Female intake is 1-1/2", 9 NH, with an output capacity of 60 gpm. (NFES #0137)

■ Std. pack: 10 or 60

4210-00-181-8872 Length: 5" EA \$8.32

Wildland fire hose nozzle with 3/4" GHT inlet threads, brass. Flow rate varies from 4 gpm spray pattern to 8 gpm straight-stream pattern. Working pressure of 250 psi. Forest Service Spec 5100-243. (NFES #0136)

This is a component of Mop-Up Kit NSN 4210-01-321-4206.

■ Std. pack: 10 or 100

4730-00-595-1103 Length: 5" EA \$16.91



Barrel-type nozzle with shutoff is made of aluminum alloy. Outer barrel rotates from high flow spray, to high flow straight stream, to low flow spray, to low flow straight stream, and to off. Forest Service Spec 5100-239.

A. Female intake is a 1", 11-1/2 NPSH, 10 to 25 gpm. (NFES #1081)

■ Std. pack: 20

4210-01-165-6603 Length: 4" EA \$24.99

B. Female intake is 1-1/2", 9 NH, 20 to 75 gpm. (NFES #1082)

■ Std. pack: 20

4210-01-167-1123 Length: 5" EA \$39.07

This shut-off-type nozzle with two outlets is a combination fog and straight-stream nozzle. Both outlets feature 3/4" GHT threads. Comes with a 3/16" (10 gpm) straight-stream tip (NSN 4210-00-203-3855) and a 3 gpm spray tip (NSN 4210-00-204-3358). Inlet is 1", 11-1/2 NPSH female. Selector ranges from spray, to straight, to off. (NFES #0024)

■ Std. pack: 20

4210-00-640-1892 Length: 5" EA \$126.06



Tip, Hose, Fire Fighting (Fire Hose Nozzle Tip)

Fog stream type tip has 3/4", 11-1/2 NH female threaded inlet and is made of aluminum. Measures 2-1/2" in overall length. Forest Service Spec 5100-244.

Size-3 tip flows 2 to 4 gpm at 100 psi. (NFES #0635)

■ Std. pack: 24

4210-00-204-3358 EA \$19.67

Size-6 tip flows 5 to 7 gpm at 100 psi. (NFES #0636)

■ Std. pack: 24

4210-00-204-3386 EA \$23.17

Solid straight stream-type tip has a 3/4", 11-1/2 NH garden hose thread connection. Female threaded inlet is made of aluminum.

Discharge opening is 3/16", 9.4 gpm at 100 psi. (NFES #0637)

■ Std. pack: 24

4210-00-203-3855 EA \$7.63

Discharge opening is 1/4", 16.8 gpm at 100 psi. (NFES #0737)

■ Std. pack: 24

4210-00-177-6135 EA \$7.84

Discharge opening is 3/8", 37.9 gpm at 100 psi. (NFES #0638)

■ Std. pack: 24

4210-00-203-3845 EA \$8.30



Shut-Off, Valve Ball (Shut-Off Valve)

Aluminum valve has a female threaded inlet with gasket recess and male threaded outlet. Features an on-off or open-close lever with stops at both positions. Removable inlet or outlet allows for easy cleaning and repair. With a 600 psi rating. Forest Service Spec 5100-238.



Includes 1", 11-1/2 NPSH threads on both ends. (NFES #1201)

■ Std. pack: 20

4210-01-165-6599 EA \$56.00

Includes 1-1/2", 9 NH threads on both ends. (NFES #1207)

■ Std. pack: 20

4210-01-165-6600 EA \$66.34

Wye Connection, Fire Hose, Valved (Fire Hose Wye Valve)

Aluminum wye valve has a female inlet and two ball-valved male outlets. Ball-type release of water either or both outlets. Working pressure is 600 psi. Forest Service Spec 5100-380.



Threads are 1", 11-1/2 NPSH. (NFES #0259)

■ Std. pack: 10

4210-00-126-5108 EA \$83.28

Threads are 1-1/2", 9 NH. (NFES #0231)

■ Std. pack: 10

4210-00-984-3475 EA \$100.90

Valve, Foot (Foot Valve)

Foot valve is made of brass or aluminum alloy and has a strainer. Forest Service Spec 5100-383.



Female threaded connection is 1-1/2", 9 NH. (NFES #0212)

■ Std. pack: 10

4820-00-126-5114 EA \$43.55

Wrench, Spanner (Spanner Wrench)

Hose coupling-type wrench is designed for use on slotted or rocker-lug couplings on Forest Service fire hoses. Spanner wrench cannot be used on pin-lugs. Made of bronze, forged brass, cast aluminum or forged aluminum. Forest Service Spec 5100-101.

Single-ended wrench fits 1", 11-1/2 NPSH and 1-1/2", 9 NH coupling. (NFES #0234)

This is a component of Mop-Up Kit NSN 4210-01-321-4206.

■ Std. pack: 20

5120-00-596-1426 Length: 6" EA \$5.43



Double-ended wrench fits 1", 11-1/2 NPSH, 1-1/2", 9 NH, and 2-1/2", 7-1/2 NH couplings. (NFES #0235)

■ Std. pack: 20

5120-00-596-1427 Length: 8-3/4" EA \$7.48



Clamp, Fire Hose, Shutoff (Fire Hose Clamp)

Shut-off clamp is designed for use on single jacket; rubber-lined fire hoses sized 1" and 1-1/2". Capable of shutting off water in a hose at 300 psi operating pressure. Lightweight and compact enough to carry in a hip pocket or on a belt loop. Forest Service Spec 5100-245. (NFES #0046)



■ Std. pack: 20

4210-00-767-7123 EA \$32.94

Mop-Up Kit, Lateral Line, 3 Wand (Mop-Up Kit)



Designed for wildfire mop-up operations, this kit contains all the equipment necessary for three people to attach to a lateral line to put out spot fires. Includes hose, T-valves, reducers, applicator wands and nozzles, wrenches, and more. DLA will provide the kit instruction sheet. All components will be packaged in 1 Box, Fiberboard-Size 7 1/4 X 9 1/4 X 26 (NFES 0385). (NFES #0772)

■ Std. pack: 1

4210-01-321-4206 EA \$866.25

Wye, Garden Hose (Garden Hose Wye Valve)



Small wye valve features 3/4", 11-1/2 NH garden hose threaded (GHT) connections. Includes one inlet and two outlets with gated shut-off ball valves. Made of brass or corrosion resistant (stainless) steel. Withstands 600 psi for three minutes without leakage or damage. Threads per Forest Service Spec 5100-190. (NFES #0904)

This is a component of Mop-Up Kit NSN 4210-01-321-4206.

Std. pack: 100

4210-01-412-6335 EA \$15.04

Tip, Applicator (Fire Hose Applicator Nozzle Tip)



Brass fog pattern spray tip, flows 3 gpm at 100 psi, 3/4", 11-1/2 NH garden hose threads. Threads per Forest Service Spec 5100-190. (NFES #0735)

This is a component of Mop-Up Kit NSN 4210-01-321-4206.

Std. pack: 24

4210-01-412-5683 EA \$8.65

Valve, Shut-Off, Garden Hose (Garden Hose Shut-Off Valve)



Shut-off valve for use on small hoses and nozzles. Made of brass or corrosion resistant (stainless) steel, 3/4", 11-1/2 NH garden hose threads. Withstands 600 psi for three minutes without leakage or damage. Threads per Forest Service Spec 5100-190. (NFES #0835)

This is a component of Mop-Up Kit NSN 4210-01-321-4206.

Std. pack: 100

4210-01-412-5684 EA \$19.62

Applicator, Water (Fire Hose Water Applicator)



Water-application wand for use in watering down wildland fire hotspots. Applicator is 52" long and comes apart in the middle. One section of the applicator is bent near the tip. All connections are 3/4" garden hose threads (GHT). Threads per Forest Service Spec 5100-190. (NFES #0720)

This is a component of Mop-Up Kit NSN 4210-01-321-4206.

Std. pack: 12

4210-01-412-5688 EA \$29.07

Mop-Up Kit, Lateral Line, 3 Wand NSN 4210-01-321-4206 is comprised of the following components:

Quantity	Name	NSN	NFES#
7	Synthetic Garden Hose, 3/4"	4210-01-167-1061	1016
3	Hoseline Tee with Capped Male Branch	4210-01-080-1460	0731
3	Fire Hose Reducer, 1 to 3/4"	4210-01-079-9286	0733
1	Fire Hose Reducer, 1-1/2" to 1"	4210-01-079-9286	0010
6	Garden Hose Shut-Off Valve, 3/4"	4210-01-412-5684	0835
3	Fire Hose Nozzle, 3/4"	4730-00-595-1103	0136
3	Fire Hose Nozzle Tip, 3/4"	4210-01-412-5683	0735
1	Garden Hose Wye Valve, 3/4"	4210-01-412-6335	0904
1	Spanner Wrench, Single-Ended	5120-00-596-1426	0234
4	Fire Hose Gasket, 1-1/2"	5330-00-239-1873	0254
4	Fire Hose Gasket, 1"	5330-00-720-2621	0743
8	Garden Hose Washer, 3/4"	5310-00-599-0776	0721
3	Fire Hose Water Applicator, 3/4"	4210-01-412-5688	0720
3	Safety Goggles	4240-01-504-7863	0318
1	Packsack	8465-00-205-3493	0744

Pumps and Accessories



A

Pump, Back Pack (Backpack Pump Outfit)

A. Complete backpack pump outfit is a combination of five-gallon Backpack Pump Bag NSN 8465-01-321-1678, Firefighting Hand Pump NSN 4320-00-595-0762 and Backpack Pump Shoulder Straps NSN 8465-01-416-1951. (NFES #1149)

■ Std. pack: 6

4320-00-289-8912

EA \$147.03



B

Harness, Waterbag (Backpack Pump Shoulder Straps)

B. Two padded replacement shoulder straps for five-gallon water bags are adjustable via slide and end snaps. Pad covers are yellow. Forest Service Spec 5100-103. (NFES #0495)

For use with Backpack Pump Bag NSN 8465-01-321-1678 and Water Bag NSN 8465-01-310-1259.

■ Std. pack: 20

8465-01-416-1951

EA \$13.68



C

Bag, Backpack, Nylon Duck (Backpack Pump Bag)

C. Nylon duck backpack pump bag comes complete with two replaceable inner bladders, one female quick-connect fitting, and shoulder straps. Includes a pocket for carrying an extra bladder. Holds water supply for fighting wildland fires. Quick-connect hose fitting mates with Firefighting Hand Pump NSN 4320-00-595-0762 (not included). Note: Not safe for use with drinking water. Forest Service Drawing 832. Forest Service Spec 5100-103. (NFES #1197)

■ Std. pack: 10

8465-01-321-1678

Yellow

Capacity: 5 gal.

EA \$43.71



D

Liner, Backpack, Pump Bag (Backpack Pump Liner)

D. Replacement bladder for Backpack Pump Bag NSN 8465-01-320-1678 does not include a quick-connect fitting. Note: Not safe for use with drinking water bag; for drinking water-safe bag, see Water Bag NSN 8465-01-310-1259. Forest Service Drawing 864. Forest Service Spec 5100-95. (NFES #0597)

■ Std. pack: 10 or 100

8465-01-321-1679

Clear

Capacity: 5 gal.

EA \$5.24



E

Coupling Half, Quick Disconnect (Quick-Connect Hose Fitting)

Replacement hose connection for firefighter's backpack pump outfit. Made of brass, cadmium-plated-steel or stainless steel.

E. Attaches to inlet on Firefighting Hand Pump NSN 4320-00-595-0762. Male quick-connect with male barbed hose connection. Forest Service Spec 5100-256. (NFES #0428)

■ Std. pack: 10 or 100

4730-01-057-0136

EA \$6.58



F

F. Attaches to tank opening for Backpack Pump Outfit NSN 4320-00-289-8912. Female connection with male screw threads. Forest Service Spec 5100-256. (NFES #0429)

■ Std. pack: 10 or 100

4730-01-057-4210

EA \$11.06



G

Pump, Reciprocating (Firefighting Hand Pump)

G. Trombone-style, plunger-type pump includes a quick-connect fitting. Positive-displacement, single-action type features screw-on combination solid straight-stream and fog nozzle. For use with Backpack Pump Outfit NSN 4320-00-289-8912. Forest Service Spec 5100-256. (NFES #0151)

■ Std. pack: 10

4320-00-595-0762

EA \$51.62

Pump Unit, Centrifugal (Firefighting Water Pump)

H. Firefighting Water Pump and Accessories. Light-weight, portable pump includes a rope-rewind starter with a two-cycle, air-cooled engine that uses a gas-oil mixture. Inlet/outlet size adapted to 1-1/2", 9 NH. Includes: a hand-priming device; a tool pouch(tools not included); a five-foot fuel line with primer bulb and quick disconnect; and a five-gallon fuel tank with quick disconnect. (No suction hose or other accessories are included with pump.) Pump weight: 60 lbs.(maximum). Forest Service Spec 5100-274. (NFES #0601)

Note: Depending on the current contract and inventory status, a WildfireMark 3 or a Mercedes Textiles Wick 375 pump may be furnished.

■ Std. pack: 1

4320-00-890-5879 EA \$3,634.81



I. Firefighting Water Pump. Light-weight portable pump has a rope-rewind starter with a two-cycle, air-cooled engine that uses a gas-oil mixture. Inlet/outlet size adapted to 1-1/2", 9 NH. Supplied with backpack frame and fuel line (with primer bulb). Pump weight: 60 lbs. (maximum). For backpack pump with accessories, see Firefighting Water Pump NSN 4320-00-890-5879. Forest Service Spec 5100-274. (NFES #0148)

Note: Depending on the current contract and inventory status, a Waterax Mark 3 or a Mercedes Textiles Wick 375 pump may be furnished.

4320-01-495-3633 EA \$3430.77



Can, Gasoline, Portable Fire Pump (Gasoline Can)

J. Self-sealing, quick-coupler enables user to change from one can to another in mere seconds. Quick-coupler immediately self-seals and completely stops flow of gasoline. For use with Firefighting Water Pump NSNs 4320-00-890-5879 and 4320-01-495-3633. Forest Service Spec. 5100-274. (NFES #0218)

■ Std. pack: 1

7240-01-044-5523 Capacity: 5 gal. EA \$225.04



Gasoline Line, Fire Pump (Fire Pump Gasoline Line)

K. Neoprene gasoline line with self-priming bulb connects portable gasoline pumps to quick-disconnect gas tank. Hose ends are fitted with female 7/16"SAE threads to accept quick-connect fittings (only male quick-connect fitting included for use with associated gasoline can). Has a 1/4" ID. Cover is oil- and ozone-resistant. For use with Gasoline Can NSN 7240-01-044-5523. Forest Service Spec 5100-274. (NFES #0113)

ⓘ 36-month maximum shelf life (extendable)

■ Std. pack: 1

4210-00-568-9904 LG(contains 5 FT) \$34.20



Spill Containment Berm, Portable (Spill Containment Berm)

L. Portable spill-containment berm is designed for secondary containment of hazardous materials from fuel and oil spills. Fits the footprint of most portable pumps and generators and collapses for portability. Made from chemical resistance 22-oz. chlorosulfonated polyethylene (CSPE) synthetic rubber (CSM). Features corrosion-resistant metal grommets, wall stiffeners and corner reinforcements.

Folded size: 7 x 4 x 33". Deployed size: 32 x 32 x 4". (NFES #0693)

4235-01-586-8307 EA \$28.28



Safety Can

Type 11 safety transport can with steel tubular handle, Jerri can style body, nozzle can be removed by the touch of a button and is attached by a small chain, color red, length 10 inch nominal, width 14 inch nominal.

(NFES #0606)

7240-01-616-2202 EA \$149.39

*Photo may not be representative of actual product available.

Chainsaw Accessories

File, Hand (American Pattern)

American-pattern file is bastard-cut (coarse teeth for rapid stock removal). Files are used where metal must be removed rapidly and finish is of secondary importance. These files are characterized by hardened, uniform teeth and conventional-style tang for attaching a wooden handle. Files are made of carbon alloy steel. Width is tapered for one third of length to point; thickness is uniform.

Bastard-cut is single cut on both flat surfaces and both square edges.

Width: 1"; Teeth per inch: 38 to 44 (NFES #0060)

■ Std. pack: 1

5110-00-242-5385	Length: 10"	DZ	\$18.77
------------------	-------------	----	---------

Width: 1"; Teeth per inch: 33 to 38 (NFES #1059)

■ Std. pack: 1

5110-00-242-5386	Length: 12"	DZ	\$17.97
------------------	-------------	----	---------

American-pattern files mainly consist of machinist's files and mill or saw files. Machinist's files are used when metal must be removed rapidly and finish is of secondary importance. Mill or saw files are suitable for the following tasks: sharpening mill or circular saws and large crosscut saws; lathe work; draw filing; filing brass and bronze; smooth general filing. These files are characterized by hardened, uniform teeth and conventional tang for attaching a wooden handle. Forged from carbon alloy steel. The three standard tooth cuts available on American-pattern files are as follows: bastard-cut (coarse teeth for rapid stock removal); second-cut (medium teeth for moderate stock removal); smooth-cut (fine teeth for smooth finishes).

Mill (regular) file is for sharpening mill or circular saws and for general use. Width is tapered for one-third of length to point; thickness is uniform. Bastard-cut is single cut on both flat surfaces and both square edges.

Width: 13/16"; Teeth per inch: 42 to 48. (NFES #0351)

■ Std. pack: 1

5110-00-242-5384	Length: 8"	DZ	\$14.25
------------------	------------	----	---------



Round chainsaw file is used to sharpen all sizes of chainsaw teeth. Diameter is uniform.

Diameter: 3/16"; Teeth per inch: 48 to 66. (NFES #2105)

■ Std. pack: 1

5110-00-782-7491	Length: 8"	DZ	\$11.40
------------------	------------	----	---------

Swiss-made round chainsaw file (smooth) forged tang. Diameter: 7/32"; Teeth per inch: 48 to 66.

Vallorbe P/N LC6678-8-7/32, or Oregon Cutting Systems P/N 70502, or Wood-Miller P/N WM6678-8-7/32, or Nicholson P/N 02230 or equal. (NFES #0345)

■ Std. pack: 49 DZO

5110-00-965-0608	Length: 8"	DZ	\$23.67
------------------	------------	----	---------

Wedge, Plastic Felling (Plastic Forestry Wedge)

Hard plastic wedge aids in forestry work, such as tree felling and bucking. (NFES #2725)

■ Std. pack: 24

5510-01-045-9198	Length: 12"; Width: 3-1/4"; Thickness: 1-1/8"	EA	\$8.11
------------------	---	----	--------



Handle, File (File Handle)

Wooden handle with metal ferrule is designed for use with files and similar tools that have tang-type shanks. Features tangholding metal jaws or chuck. The adjusting mechanism consists of an adjusting cap and a threaded metal sleeve or screw.



Pre-bored holes receive tang-type shank.

Small handle fits files 3" to 6" in length. Handle has a 1" diameter and a 4" overall length. (NFES #0358)

■ Std. pack: 1

5110-00-263-0342	DZ	\$17.63
------------------	----	---------

Large handle fits files 10" to 14" in length. Handle has a 1-5/16" diameter and a 5-1/2" overall length. (NFES #0063)

■ Std. pack: 1

5110-00-263-0341	DZ	\$29.83
------------------	----	---------

File Guide, Clamp Chain Saw (Chainsaw File Guide Chainsaw)

Specially tooled for sharpening teeth and adjusting depth of cut on all types and sizes of chainsaws. Includes an 8"-long file, frame, clamps and joint device. Heavy-duty clamp attaches file guide to bench, preventing tipping. (NFES #0343)



■ Std. pack: 25

5110-01-046-5031	EA	\$32.09
------------------	----	---------

Chaps, Protective (Chainsaw Operator's Chaps)

These heavy-duty chaps are designed specifically to protect against chainsaw cuts. The cut-resistant nylon duck shells are padded with five layers of aramid fillers. Chaps cover front and sides of legs from waist to mid-calf and are secured with adjustable waist belt and leg straps. The orange color will aid in visibility and assist users in determining when the chaps require cleaning. For proper fit, length should be selected to cover from the user's waist to at least 2" below boot top. Features a tool pouch. Forest Service Spec 6170-4G.



(NFES #0045)

■ Std. pack: 10

8415-00-286-7507	Orange	Length: 32"	PR	\$84.04
------------------	--------	-------------	----	---------

(NFES #0078)

■ Std. pack: 10

8415-01-028-5575	Orange	Length: 36"	PR	\$84.04
------------------	--------	-------------	----	---------

(NFES #0150)

■ Std. pack: 10

8415-01-294-7717	Orange	Length: 40"	PR	\$84.04
------------------	--------	-------------	----	---------

Fuel Storage

Bottle, Fuel (Fuel Bottle)

A. Fuel bottle is made of one-piece, seamless, lightweight aluminum construction with a synthetic screw-on cap. Used for carrying fuel on the fire line. Measures 8.15 cm in diameter and 26 cm long and will fit in a firefighter's canteen case. For use in carrying chainsaw mix and other petroleum- or alcohol-based fuels. Note: Not safe for carrying drinking fluids. (NFES #1535)

■ Std. pack: 10 or 40

7240-01-351-2133	Red	Capacity: 1 liter	EA	\$15.79
------------------	-----	-------------------	----	---------



A.

Bag, Fuel Bottle (Fuel Bottle Bag)

B. Nylon bag with DOT flammable emblem on sides will hold six one-liter aluminum fuel bottles (see Fuel Bottle NSN 7240-01-351-2133), with side cinches to prevent rattling. Intended for use in aircraft transport. Forest Service Spec 5100-613. (NFES #0536)

■ Std. pack: 20

8465-01-503-4476	Blue		EA	\$11.35
------------------	------	--	----	---------



B.

Batteries

Battery, Nonrechargeable (C Battery) (Alkaline Battery)

C. Alkaline C Cell batteries designed for Flashlights, Radios, Recorders, Toys, and Photo. (NFES #0834)

ⓘ 36-month maximum shelf life (not extendable)

■ Std. pack: 6 (12/pg)

6135-00-985-7846	Size: C		PG(contains 12 EA)	\$6.62
------------------	---------	--	--------------------	--------



C.

Battery, Nonrechargeable (AA) (Alkaline Battery)

D. Pallet contains 1,488 packages (186 cases, each containing eight packages each). (NFES #0030)

ⓘ 36-month maximum shelf life (not extendable)

■ Std. pack: 12

6135-00-985-7845	Size: AA		PG(contains 24 EA)	\$5.70
------------------	----------	--	--------------------	--------



D.

Battery, Nonrechargeable (7.5 V)

Screw Terminals, dimensions 7.2 X 4.0 X3.75", can be used for lanterns and repeater radios. (NFES #1023)

ⓘ 36-month maximum shelf life (not extendable)

■ Std. pack: 1

6135-01-616-2203			PG(contains 4 EA)	\$92.58
------------------	--	--	-------------------	---------

Headlamps and Lightsticks

Headlamp, Firefighter (Firefighter's Headlamp)

LED headlamp for NFPA 1977 firefighter's helmet has two light-output levels, with beam position vertically adjustable from 20 degrees below horizontal to 90 degrees above. Run time minimum five hours at maximum light output. Water- and impact-resistant. Uses AA alkaline batteries (not included). (NFES #0718)

6260-01-603-6874

EA \$46.16

Light, Chemiluminescent (Lightstick-Chemlight)

A. Chemical lights, commonly known as Chemlights, are a non-toxic, non-flammable sources of light. These lightsticks are good for emergency, safety and signaling uses. They provide safe, effective light without heat, sparks or flame. To activate, a user bends the plastic lightstick, breaking the inner glass vial. Chemicals from the broken glass vial mix with chemicals from the plastic tube to deliver a light-creating chemical reaction. Self-contained, compact, rugged and waterproof.

Average life rating: 12 Hours. (NFES #3009)

ⓘ 48month maximum shelf life (not extendable)

6260-01-074-4229 Ability One Green Length: 6" BX(contains 10 EA) \$16.60

(NFES #3007)

ⓘ 48month maximum shelf life (not extendable)

6260-01-178-5559 Ability One Red Length: 6" BX(contains 10 EA) \$19.17

(NFES #3012)

ⓘ 48month maximum shelf life (not extendable)

6260-01-196-0136 Ability One Yellow Length: 6" BX(contains 10 EA) \$16.56



A

First Aid



B

Swabs, Sting Kill (Insect Bite Swab)

B. Non-toxic swab or wipe provides quick relief from pain, irritation and itching caused by insect bites or stings. (NFES #1243)

ⓘ 36-month maximum shelf life (extendable)

📦 Std. pack: 10 or 100

6510-01-045-3506

PG(contains 10 EA) \$1.11

First Aid Kit, General Purpose (First Aid Kit)

C. First aid kit is designed by the USDA Forest Service for forest workers and wildland firefighters, but it is suitably equipped for all users. Kit contains: three povidone iodine swabs; two gauze pads; two non-stick pads; six bandages (woven adhesive); four butterfly closures; elastic bandage; one pair of non-latex gloves; mouth-to-mouth barrier; towelette; biohazard bag; a roll of adhesive tape; two sheets of moleskin; face mask; four aspirins; four acetaminophen tablets. Includes instructions for mouth-to-mouth barrier use and contents list. Comes in a translucent plastic telescoping case. Type I. Forest Service Spec 6170-6. (NFES #0067)

ⓘ 24-month maximum shelf life (extendable)

📦 Std. pack: 100

6545-00-656-1092 AbilityOne

Case: 3-1/2 x 3-1/2 x 1-3/4"

EA \$11.72



C

Intended for use in vehicles or large crews. First aid kit is designed by the USDA Forest Service for forest workers and wildland firefighters, but it is suitably equipped for all users. Kit contains: 25 bandages (woven adhesive); 12 knuckle bandages; 16 butterfly closures; two elastic bandages; two triangular bandages; two compress bandages; elastic support; two combine dressings; two pairs of non-latex gloves; three rolls of adhesive tape; four sheets of moleskin; two chemical cold packs; one eye wash unit; one bottle of tincture green soap; one bottle calamine lotion; 30 aspirins; 30 acetaminophen tablets; two patient information tags; forceps; medic shears; two antiseptic kits (including two bottles of iodine, eight povidone iodine swabs, 12 gauze pads, 12 non-stick pads); and two bodily fluid barrier kits (including four pairs non-latex gloves, two face shields, two mouth-to-mouth barriers, four antiseptic towelettes, two biohazards disposal bags, and two reclosable plastic bags.) Kit also contains instructions for mouth-to-mouth barrier use, first aid manual, contents list and lead pencil. Comes in a metal hanging case. Type III. Forest Service Spec 6170-6. (NFES #1604)



20 to 25 Person first aid kit.

■ Std. pack: 10

6545-00-656-1094 AbilityOne Case: 10 x 14-1/2 x 2-3/4" EA \$109.30



Intended for use by a crew in the field. First aid kit is designed by the USDA Forest Service for forest workers and wildland firefighters, but it is suitably equipped for all users. Kit contains: 25 bandages (woven adhesive); 12 knuckle bandages; 16 butterfly closures; four elastic bandages; two triangular bandages; two compress bandages; elastic support (roll); two combine dressings; two pairs non-latex gloves; three rolls of adhesive tape; four sheets of moleskin; two chemical cold packs; two containers eye-wash solution; two bottles tincture green soap; two bottles calamine lotion; 30 aspirin tablets; 30 acetaminophen tablets; two patient-information tags; forceps; paramedic shears; antiseptic kit (which includes one bottle povidone, four povidone iodine swabs, six gauze pads, six non-stick pads); and two bodily fluid barrier kits (including four pairs non-latex gloves, two face shields, two mouth-to-mouth barriers, four antiseptic towelettes, two biohazards disposal bags, and two reclosable plastic bags.) Kit contains protective components for the user. Also includes instructions for mouth-to-mouth barrier use, first aid manual, contents list and lead pencil. Comes in a red nylon duck case attached to a 2"-wide belt with buckle. Type IV. Forest Service Spec 6170-6. (NFES #1143)

Up to 25 Person first aid kit.

ⓘ 24-month maximum shelf life (not extendable)

■ Std. pack: 10

6545-01-010-7754 AbilityOne Case: 10 x 14-1/2 x 2-3/4" EA \$115.36

Protection Kit, Biological Hazard (Bodily Fluids Barrier Kit)

For use with other first aid kits or by itself, this kit contains components to protect first responders and first aid providers from body fluids such as blood. Each kit comes in a red nylon case with hanging snap and includes two one-person sets, each in a reclosable pouch. Each set contains two pair of latex gloves, one combination face-and-eye shield, one mouth-to-mouth shield, two towelettes, one biohazard disposal bag with tie, and one reclosable plastic bag. Forest Service Spec 6170- 15. (NFES #0640)



■ Std. pack: 10

6515-01-376-7247 AbilityOne KT \$33.73

Prices in this catalog are subject to change. Current prices are available at

<https://dod.email.dla.mil/>

Protection Kit, Biological Hazard (Biological Hazards Protection Kit)



Single-person contagious disease barrier kit offers full body coverage and protection against direct exposure to blood, body fluids, and airborne infectious diseases.

Kit includes one polycoated uni-size coverall or polycoated uni-size gown with sleeves, hood, elastic wrist, and elastic face enclosure or coverall with sleeves, hood, elastic wrist, elastic ankle, and elastic face enclosure. A NIOSH-approved N95 mask to help reduce inhalation exposures to certain airborne biological particles (e.g. mold, Bacillus Anthracis, Mycobacterium Tuberculosis, etc.), a pair of large nitrile gloves, a pair of safety glasses, a pair of boot covers, a pair of shoe covers having non-skid bottoms, and a biohazard bag (marked with the Biohazard symbol) having a capacity of four to six gallons. (NFES #1660)

6515-01-585-1976 KT \$11.80

Multi-person contagious disease barrier kit offers full body coverage and protection against direct exposure to blood, body fluids, and airborne infectious diseases.

Kit includes ten polycoated uni-size coveralls or gowns with sleeves, hood, elastic wrist and elastic face enclosure. Ten NIOSH-approved N95 masks to help reduce inhalation exposures to certain airborne biological particles (e.g., mold, Bacillus Anthracis, Mycobacterium Tuberculosis, etc.), 10 pairs of large nitrile gloves, two pairs of safety glasses, ten pairs of boot covers, ten pairs of shoe covers having non-skid bottoms, and three biohazard bags (marked with the Biohazard symbol), each having a capacity of four to six gallons. (NFES #1675)

6515-01-585-1975 KT \$80.63

Personal Protection

Shelter, Fire, M-2002 (Fire Shelter, Complete)

New-generation fire shelter provides increased protection from radiant and convective heat in wildland firefighter entrapment situations. This set includes: Fire Shelter NSN 4240-01-498-3184; nylon duck carrying case NSN 8465-01-498-3190; carrying case plastic liner NSN 8465-01-498-3191. Deployed size: 86" long; 15-1/2" high; 31" wide. Forest Service Spec 5100-606. (NFES #0925)



■ Std. pack: 10

4240-01-498-3194 Regular EA \$283.88

Shelter, Fire, M-2002 (Fire Shelter, Complete - Large)

New-generation fire shelter provides increased protection from radiant and convective heat in wildland firefighter's entrapment situations. Large-size shelter designed for firefighters taller than 6' 1" or whose girth exceeds 53" at any point. The larger fire shelter provides better protection for larger people by allowing less contact of the shelter material with the occupant's body, and it provides more air space between the shelter and occupant. The large fire shelter is easily identified by the orange deploy strap. This set includes: Fire Shelter NSN 4240-01-529-8804; Nylon Duck Carrying Case NSN 8465-01-498-3190 and Carrying Case Plastic Liner NSN 8465-01-498-3191. Deployed size: 96" long; 19-1/2" high; 33" wide. Forest Service Spec 5100-606. (NFES #0975)



■ Std. pack: 10

4240-01-527-5248 Large EA \$349.71

Shelter, Fire, M-2002 (Fire Shelter, Single)

New generation fire shelter provides increased protection from radiant and convective heat in wildland firefighter entrapment situations. Each shelter comes folded in a quick-opening clear polyvinyl bag. (Fire shelter only; does not come with case or case liner.) Deployed size: 86" long; 15-1/2" high; 31" wide. For use with M-2002 Fire Shelter Case NSN 8465-01-498-3190 and M-2002 Fire Shelter Case Liner NSN 8465-01-498-3191. (Each sold separately.) This item is a component of Fire Shelter, Complete (M-2002) NSN 4240-01-498-3194. Forest Service Spec 5100-606. (NFES #0926)



■ Std. pack: 10

4240-01-498-3184 EA \$268.29

Shelter, Fire, M-2002 (Fire Shelter, Single - Large)

Fire shelter provides increased protection from radiant and convective heat in wildland firefighter entrapment situations. Large-size shelter designed for firefighters taller than 6' 1" or whose girth exceeds 53" at any point. Each shelter comes folded in a quick-opening clear polyvinyl bag. (Fire shelter only; does not come with a case or case liner.) Deployed size: 96" long; 19-1/2" high; 33" wide. For use with M-2002 Fire Shelter Case NSN 8465-01-498-3190 and M-2002 Fire Shelter Case Liner NSN 8465-01-498-3191 each sold separately. This item is a component of Fire Shelter, Complete (M-2002, Large) NSN 4240-01-527-5248. Forest Service Spec 5100-606. (NFES #0973)



■ Std. pack: 10

4240-01-529-8804 Large EA \$322.63

Case, Carrying, Fire (Fire Shelter Carrying Case - M-2002)

Nylon duck case for carrying M-2002 fire shelter. Opening flap closes with Velcro. Includes vertical and horizontal hangers. Instructions provided in front pocket. For use with M-2002 fire shelter NSN 4240-01-498-3184 (regular) or NSN 4240-01-529-8804 (large) and fire shelter carrying case liner (M-2002) NSN 8465-01-498-3191. This item is a component of fire shelter, complete (M-2002) NSN 4240-01-498-3194 and NSN 4240-01-529-8804. Forest Service Spec 5100-609. (NFES #0927)



■ Std. pack: 10

8465-01-498-3190 Blue EA \$10.42

Liner, Carrying Case (Fire Shelter Carrying Case Liner - M-2002)

Open-topped hard plastic liner fits inside M-2002 fire shelter carrying case. Liner protects the shelter from being crushed. For use with M-2002 fire shelter NSN 4240-01-498-3184 (regular) or NSN 4240-01-529-8804 (large) and fire shelter carrying case (M-2002) NSN 8465-01-498-3190. This item is a component of fire shelter, complete (M-2002) NSN 4240-01-498-3194 and NSN 4240-01-529-8804. Forest Service Spec 5100-610. (NFES #0928)



■ Std. pack: 10

8465-01-498-3191 EA \$4.79

Shelter, Fire, Practice. Complete, M2002 (Training/Practice Fire Shelter, Complete)

Reusable practice fire shelter system for training in use of M-2002 fire shelter. Same size and dimensions as M-2002 fire shelter. Includes the carrying case, case liner, polyvinyl bag, and practice shelter. Note: This item is not fire-resistant and should not be used as a fire shelter. Forest Service Spec 5100-611. (NFES #2678)



■ Std. pack: 10

6930-01-499-0605 EA \$122.31

To receive future editions of this catalog, contact **DLA WFPP** at **DLAWFPP@dla.mil**

Shelter, Fire, Practice, Complete, M2002 (Training/Practice Fire Shelter, Complete Large)

Reusable practice fire shelter system for training in use of M-2002 large fire shelter. Large-size shelter designed for firefighters taller than 6' 1" or whose girth exceeds 53" at any point. Same size and dimensions as M-2002 large fire shelter.

Includes the carrying case, case liner, polyvinyl bag, and practice shelter. Note: This item is not fire-resistant and should not be used as a fire shelter. Forest Service Spec 5100-611. (NFES #2799)



■ Std. pack: 10

6930-01-529-8807 Large EA \$126.23

Shelter, Fire, Practice, M2002 (Training/Practice Fire Shelter)

Reusable practice fire shelter system is designed for training in use of M-2002 fire shelter. Same size and dimensions as M-2002 fire shelter. Reusable polyvinyl bag

(NSN 6930-01-499-0618), carrying case (NSN 6930-01-499-0614) and carrying case liner (NSN 8465-01-498-3191) are sold separately. Note: This item is not fire-resistant and should not be used as a fire shelter. Forest Service Spec 5100-611. (NFES #2679)



■ Std. pack: 10

6930-01-499-0608 Large EA \$89.17

Shelter, Fire, Practice, M2002 (Training/Practice Fire Shelter)

Reusable practice fire shelter system is designed for training in use of M-2002, Large fire shelter. Large-size shelter designed for firefighters taller than 6 foot and 1 inch or whose girth exceeds 53" at any point.

Same size and dimensions as M-2002 Large fire shelter. Reusable polyvinyl bag (NSN 6930-01-499-0618), carrying case (NSN 6930-01-499-0614) and carrying case liner (NSN 8465-01-498-3191) are sold separately. Note: This item is not fire-resistant and should not be used as a fire shelter. Forest Service Spec 5100-611. (NFES #2798)



■ Std. pack: 10

6930-01-529-8805 Large EA \$65.56

Case, Carrying, Practice, Fire Shelter, M2002 (Training/Practice Fire Shelter Carrying Case)

Nylon duck case for carrying M-2002 practice shelter. Opening flap closes with Velcro. Includes vertical and horizontal hangers. Instructions provided in front pocket. Practice fire shelter for regular-size NSN 6930-01-499-0608 or for large-size 6930-01-529-8805, reusable polyvinyl bag NSN 6930-01-499-0618 and carrying case liner NSN 8465-01-498-3191 are sold separately. Forest Service Spec 5100-612. (NFES #2680)



■ Std. pack: 10 or 100

6930-01-499-0614 Red EA \$20.94

Large New-Generation Fire Shelter

(Taken from TechTips 0551-2325-MTDC, June 2005)



How Does the Large Shelter Differ from the Regular Shelter?

The large shelter is longer, wider and taller than the regular shelter and weighs about 0.6 lbs. more. The table above shows the dimensions of both shelters. The large version is recommended for firefighters who are taller than 6'1" or whose girth is larger than 53". Firefighters shorter than 5'7" may have difficulty deploying and holding the large shelter down. The large shelter is easily identified by "LARGE" stenciled on the quickdeployment strap. The large shelter's deployment strap is orange rather than yellow, the color of the strap on the regular shelter.

Fire Shelter Training Materials

Training materials can be ordered through the Great Basin Cache located at the National Interagency Fire Center (NIFC). All fire-shelter training materials are in PMS 411. For more ordering information, go to the National Wildfire Coordinating Group publications website: <http://www.nwcg.gov/pms/pubs/pubs.htm>.

- The New Generation Fire Shelter, pamphlet (NFES #2710)
- The New Generation Fire Shelter, VHS and DVD (VHS – NFES #2711, DVD – NFES #2712)

Spanish-language versions also are available:

- El Refugio de Proteccion Nueva Generacion, pamphlet (NFES #2736)
- El Refugio de Proteccion Nueva Generacion, VHS (NFES #2735)

More information about the fire shelter can be found at www.nifc.gov/fireShelt/fshelt_main.html.

For additional technical information, contact:

Tony Petrilli
U.S. Forest Service
Email: apetrilli@fs.fed.us

Bag, Polyvinyl, Practice, Fire Shelter, M-2002 (Training/Practice Fire Shelter Bag, Polyvinyl)

Reusable polyvinyl bag for M-2002 practice fire shelter. Simulates the tear-open bag used with the real fire shelter. Polyvinyl bag only. Practice fire shelter for regular-size NSN 6930-01-499-0608 or for large-size NSN 6930-01-529-8805, carrying case NSN 6930-01-499-0614, and carrying case liner NSN 8465-01-498-3191 are sold separately. Forest Service Spec 5100-611. (NFES #2681)



■ Std. pack: 100

6930-01-499-0618 EA \$23.34

Shroud, Face And Neck, Wildland Firefighter (Wildland Firefighter's Face-and-Neck Shroud)

Flame-resistant shroud protects lower face and neck of a wildland firefighter from radiant heat. Attaches to Wildland Firefighter's Helmets NSNs 8415-01-055-2265, 8415-01-504-9044, 8415-01-504-9045, 8415-01-504-9042, 8415-01-504-9048, 8415-01-504-9050 and 8415-01-504-9047 via a hook-and-pile fastener tape. Shroud extends approximately 10" below helmet and encircles the head, leaving 6"-wide, 4"-deep opening for the eyes. Made from two layers of material for extra protection. Closes in front with hook-and-loop fastener tape. One size fits all. Washable. Forest Service Spec 5100-601. (NFES #1274)



■ Std. pack: 20

8415-01-483-6075 Yellow EA \$25.49

Chest Harness, Fire Shelter (Chest Harness)

Black nylon webbing harness is designed for carrying a fire shelter on the chest. Features straps over the shoulders and around the chest. The fire shelter fastens to a horizontal hanger. Forest Service Spec 5100-104, Rev A. MTDC Drawing 948. (NFES #0294)



■ Std. pack: 20

8465-01-463-4648 EA \$14.28

Helmet, Fireman's (Wildland Firefighter's Helmet)

Cap-style helmet with peak includes three non-metallic headlamp/goggle retainer clips and four retro-reflective strips. Four-point suspension headband with crown straps, sweatband, and nape devise with slide-tab system at back for size adjustment. Three strips of hook-and-loop fastening tape on inside of helmet for attaching a face-and-neck shroud, NSN 8415-01-483-6075. Adjustable chin strap. Fits head sizes 6-1/2 to 8. Conforms to NFPA 1977. (NFES #0109)



■ Std. pack: 20

8415-01-055-2265 Yellow EA \$33.08



Wildfire helmets are specifically engineered to meet the requirements of wildland firefighters. Available in both cap and hat (full brim) styles. The helmets include goggle retainer clips, light-reflective strips, six-point ratchet suspension system, and a postman's slide chinstrap. Includes three strips of hook-fastening tape for attaching a face-and-neck shroud, NSN 8415-01-483-6075. Conforms to NFPA 1977. Fits head sizes 6-1/2 to 8.

Cap style.

(NFES #0723)

8415-01-504-9044 Bullard FH911CRRED Red EA \$38.73

(NFES #0724)

8415-01-504-9045 Bullard FH911CRWHT White EA \$38.73

(NFES #0722)

8415-01-504-9042 Bullard FH911CRYLW Yellow EA \$38.73



Hat style. (full brim).

(NFES #0922)

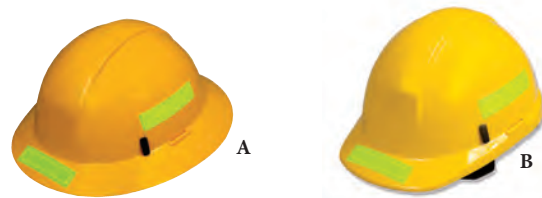
8415-01-504-9048 Bullard FH911HRRED Red EA \$55.07

(NFES #0923)

8415-01-504-9050 Bullard FH911HRWHT, White EA \$55.07

(NFES #0921)

8415-01-504-9047 Bullard FH911HRYLW Yellow EA \$55.07



Helmet with ratchet suspension has an six-point assembly that is easily replaceable. Front suspension (sweatband) covering which is replaceable and washable, padded ratchet with two height level adjustments for proper fit. Headband keeps straps away from user's head and cushions the scalp in soft material for added comfort. Fits size 6-1/2 to 8". Conforms to NFPA 1977.

A. Hat style. (full brim)

(NFES #0116)

■ Std. pack: 12

8415-01-597-6005 Morning Pride HT-WF-Y Yellow EA \$48.61

B. Cap style.

(NFES #0117)

■ Std. pack: 12

8415-01-597-6013 Morning Pride HT-WS-Y Yellow EA \$46.08

Goggles, Industrial (Safety Goggles)

Low-profile design goggles protect against chemical splash and impact. Lens provides superior optics and peripheral vision. Soft elastomer seal on frame seals goggles to face while providing enhanced comfort. Impact-resistant, clear polycarbonate lens absorbs more than 99.9 percent of harmful UV light. Indirect venting increases air circulation. Quick-adjust headband. This is a component of Mop-Up Kit NSN 4210-01-321-4206. Meets ANSI Z87.1. **(NFES #0318)**



Gray frame with clear lens.

■ *Std. pack: 50*

4240-01-504-7863	Uvex Stealth S3960C	PR	\$12.22
------------------	---------------------	----	---------

Spectacles, Industrial (Safety Glasses Safety)

Glasses provide eye protection while the wearer performs light work and can be worn over most prescription glasses. Wrap-around-style goggles with vented side protection are made of polycarbonate plastic and feature an antiscratch, anti-fog coating and UV protection. In accordance with ANSI Z87.1.

(NFES #0475)

■ *Std. pack: 100*

4240-01-292-2816	Clear	PR	\$4.64
------------------	-------	----	--------

(NFES #0476)

■ *Std. pack: 100*

4240-01-292-5055	Tinted Amber*	PR	\$4.64
------------------	---------------	----	--------

(NFES #0474)

■ *Std. pack: 100*

4240-01-292-2817	Tinted Gray	PR	\$4.64
------------------	-------------	----	--------

Gloves, Leather (Firefighter's Work Gloves Firefighter's)

Heavy-duty, Gunn-cut, rough-out cowhide gloves are designed for use on fire lines and can be used for general forestry work. Each glove features an adjustable wrist strap. NFPA 1977 compliant. Forest Service Spec 6170-5.



(NFES #1293)

■ *Std. pack: 10 or 100*

8415-01-394-0208	UNICOR	Size: XS	PR	\$14.21
------------------	--------	----------	----	---------

(NFES #1294)

■ *Std. pack: 10 or 100*

8415-01-394-0209	UNICOR	Size: S	PR	\$14.21
------------------	--------	---------	----	---------

(NFES #1295)

■ *Std. pack: 10 or 100*

8415-01-394-0210	UNICOR	Size: M	PR	\$14.21
------------------	--------	---------	----	---------

(NFES #1296)

■ *Std. pack: 10 or 100*

8415-01-394-0215	UNICOR	Size: L	PR	\$14.21
------------------	--------	---------	----	---------

(NFES #1297)

■ *Std. pack: 10 or 100*

8415-01-397-3937	UNICOR	Size: XL	PR	\$14.21
------------------	--------	----------	----	---------

Heavy duty, Gunn-cut, brushed-pigskin gloves are designed for use on fire lines and can be used for general forestry work. Each glove features a keystone double layer thumb crotch, elastic wrist shirring and leather storage strap. NFPA 1977 compliant.



(NFES #1639)

■ *Std. pack: 72*

8415-01-565-0623	Any Acceptable Color	Size: XS	PR	\$15.68
------------------	----------------------	----------	----	---------

(NFES #1640)

■ *Std. pack: 72*

8415-01-565-0620	Any Acceptable Color	Size: S	PR	\$15.68
------------------	----------------------	---------	----	---------

(NFES #1641)

■ *Std. pack: 72*

8415-01-565-0618	Any Acceptable Color	Size: M	PR	\$15.68
------------------	----------------------	---------	----	---------

(NFES #1642)

■ *Std. pack: 72*

8415-01-565-0624	Any Acceptable Color	Size: L	PR	\$15.68
------------------	----------------------	---------	----	---------

(NFES #1643)

■ *Std. pack: 72*

8415-01-565-0625	Any Acceptable Color	Size: XL	PR	\$15.68
------------------	----------------------	----------	----	---------

Heavy duty, Gunn-cut, split-cowhide leather gloves are designed for use on fire lines and can be used for general forestry work. Features a wing thumb, continuous index finger construction, elastic Kevlar knit wristlet and storage strap. Anatomically designed and unlined. NFPA 1977 compliant.



(NFES #1474)

8415-01-568-0011	Any Acceptable Color	Size: XS	PR	\$26.61
------------------	----------------------	----------	----	---------

(NFES #1475)

8415-01-568-0006	Any Acceptable Color	Size: S	PR	\$26.61
------------------	----------------------	---------	----	---------

(NFES #1476)

8415-01-568-0013	Any Acceptable Color	Size: M	PR	\$26.61
------------------	----------------------	---------	----	---------

(NFES #1477)

8415-01-568-0008	Any Acceptable Color	Size: L	PR	\$26.61
------------------	----------------------	---------	----	---------

(NFES #1478)

8415-01-568-0012	Any Acceptable Color	Size: XL	PR	\$26.61
------------------	----------------------	----------	----	---------

Plug, Ear (Ear Plugs)

Plugs are designed to provide general hearing protection in noisy environments. Made of nontoxic, non-allergenic, closed-cell PVC foam that expands to fit most ear sizes. New two-color design allows for quick inspection of proper insertion by users. Dispenser box contains 200 individually wrapped pairs. A-A-54878. **(NFES #1027)**



■ *Std. pack: 1 (200pr)*

6515-00-137-6345	AbilityOne	BX(contains 400 EA)	\$25.45
------------------	------------	---------------------	---------

Shirt, Fireman's (Wildland Firefighter's Shirt - Nomex)

Flame-resistant, 5-1/2-oz., Aramid (Nomex) shirt is designed for use by wildland firefighters as a safety garment. The bright-yellow shirt is single-breasted with a button front, a rolled collar and a straight-cut bottom. Shirt has two flap-closing breast pockets and hook-and-pile fasteners for pockets and cuffs. Left pocket has a compartment for pencil storage. Forest Service Spec 5100-91.



■ Standard pack may vary due to contract change.

NSN	NFES #	Color	Size	Std. Pack	U/I	Price
8415-01-211-6316	0522	Yellow	XS	30	EA	76.20
8415-00-233-5818	0577	Yellow	S	30	EA	76.20
8415-01-434-0618	0511	Yellow	S/Long	30	EA	76.20
8415-00-233-5819	0578	Yellow	M	30	EA	76.20
8415-01-421-3905	0569	Yellow	M/Long	30	EA	76.20
8415-00-259-8718	0579	Yellow	L	30	EA	76.20
8415-01-285-3530	2078	Yellow	L/Long	30	EA	76.20
8415-00-259-8722	0580	Yellow	XL	30	EA	76.20
8415-01-284-7500	2079	Yellow	XL/Long	30	EA	76.20
8415-01-421-3907	0570	Yellow	XXL	30	EA	76.20
8415-01-434-0626	0512	Yellow	XXL/Long	30	EA	76.20
8415-01-533-1740	2910	Yellow	XXXL	30	EA	76.20
8415-01-533-2435	2911	Yellow	XXXL/Long	30	EA	76.20

Pants, Flame Resistant BDU Aramid (Wildland Firefighter's Pants, Type I, Meta-Aramid - Nomex)

BDU-style flame-resistant pants include waist-adjustment buckles, cuff hook-and loop adjustment straps and cargo pockets. Wildland firefighter safety garment is made from a 6.7-oz., twill-weave, meta-aramind (Nomex) blend material. The BDU pants can accommodate a 2" wide belt. Forest Service Spec 5100-92.



■ Standard pack may vary due to contract change.

NSN	NFES #	Color	Waist Size	Inseam	Std. Pack	U/I	Price
8415-01-464-2282	2800	Sage Green	26 to 30"	30"	30	PR	71.32
8415-01-464-3671	2802	Sage Green	30 to 34"	30"	30	PR	71.32
8415-01-464-3672	2801	Sage Green	28 to 32"	30"	30	PR	71.32
8415-01-464-3673	2806	Sage Green	38 to 42"	30"	30	PR	71.32
8415-01-464-3675	2807	Sage Green	40 to 44"	30"	30	PR	71.32
8415-01-464-3676	2803	Sage Green	32 to 36"	30"	30	PR	71.32
8415-01-464-3677	2804	Sage Green	34 to 38"	30"	30	PR	71.32
8415-01-464-3678	2805	Sage Green	36 to 40"	30"	30	PR	71.32
8415-01-537-4981	2842	Sage Green	44 to 48"	30"	30	PR	71.32
8415-01-591-6932	2737	Sage Green	24 to 28"	30"	30	PR	71.32
8415-01-464-4242*	2700	Sage Green	26 to 30"	33"	30	PR	71.32
8415-01-464-4244*	2702	Sage Green	30 to 34"	33"	30	PR	71.32
8415-01-464-4247*	2701	Sage Green	28 to 32"	33"	30	PR	71.32
8415-01-464-4248*	2703	Sage Green	32 to 36"	33"	30	PR	71.32
8415-01-464-5621*	2705	Sage Green	36 to 40"	33"	30	PR	71.32
8415-01-464-5624*	2706	Sage Green	38 to 42"	33"	30	PR	71.32
8415-01-464-5645*	2707	Sage Green	40 to 44"	33"	30	PR	71.32
8415-01-464-5742*	2704	Sage Green	34 to 38"	33"	30	PR	71.32
8415-01-537-4984	2846	Sage Green	44 to 48"	33"	30	PR	71.32
8415-01-591-6925	2738	Sage Green	24 to 28"	33"	30	PR	71.32
8415-01-537-4982	2843	Sage Green	28 to 32"	36"	30	PR	71.32
8415-01-537-4983	2844	Sage Green	30 to 34"	36"	30	PR	71.32
8415-01-537-4985	2845	Sage Green	32 to 36"	36"	30	PR	71.32
8415-01-537-4986	2841	Sage Green	26 to 30"	36"	30	PR	71.32
8415-01-537-5677	2847	Sage Green	34 to 38"	36"	30	PR	71.32
8415-01-537-5678	2849	Sage Green	38 to 42"	36"	30	PR	71.32
8415-01-537-5679	2850	Sage Green	40 to 44"	36"	30	PR	71.32
8415-01-537-5680	2851	Sage Green	44 to 48"	36"	30	PR	71.32
8415-01-537-5681	2848	Sage Green	36 to 40"	36"	30	PR	71.32

*BDUs with a 34" inseam will be supplied until our stock is depleted and then the 33" inseam will be available for issue.

Pants, Flame Resistant BDU Aramid (Wildland Firefighter's Pants, Type II, Para-Aramid - Kevlar)

BDU-style pants include waist-adjustment buckles, cuff hook-and-loop adjustment straps and cargo pockets. Wildland firefighter flame-resistant pants are made from a 7.0-oz./sq. yd., rip-stop weave, para-aramid (Kevlar) blend material. The BDU pants can accommodate a 2" wide belt. Forest Service Spec 5100-92.



■ Std. pack: 30

NSN	NFES #	Color	Waist Size	Inseam	Std. Pack	U/I	Price
8415-01-591-6926	2954	Lt. Spruce Green	26 to 30"	30"	30	PR	137.47
8415-01-559-3545	2956	Lt. Spruce Green	28 to 32"	30"	30	PR	137.47
8415-01-559-3542	2957	Lt. Spruce Green	30 to 34"	30"	30	PR	137.47
8415-01-559-3549	2958	Lt. Spruce Green	32 to 36"	30"	30	PR	137.47
8415-01-559-3541	2959	Lt. Spruce Green	34 to 38"	30"	30	PR	137.47
8415-01-559-3546	2963	Lt. Spruce Green	36 to 40"	30"	30	PR	137.47
8415-01-591-6929	2964	Lt. Spruce Green	38 to 42"	30"	30	PR	137.47
8415-01-591-6930	2966	Lt. Spruce Green	40 to 44"	30"	30	PR	137.47
8415-01-559-3540	2944	Lt. Spruce Green	28 to 32"	33"	30	PR	137.47
8415-01-559-3543	2945	Lt. Spruce Green	30 to 34"	33"	30	PR	137.47
8415-01-559-3544	2946	Lt. Spruce Green	32 to 36"	33"	30	PR	137.47
8415-01-559-3547	2947	Lt. Spruce Green	34 to 38"	33"	30	PR	137.47
8415-01-559-3548	2948	Lt. Spruce Green	36 to 40"	33"	30	PR	137.47
8415-01-591-6928	2955	Lt. Spruce Green	26 to 30"	33"	30	PR	137.47
8415-01-591-6933	2965	Lt. Spruce Green	38 to 42"	33"	30	PR	137.47
8415-01-591-6934	2967	Lt. Spruce Green	40 to 44"	33"	30	PR	137.47
8415-01-619-3409	2293	Lt. Spruce Green	32 to 36"	36"	30	PR	137.47
8415-01-619-3413	2294	Lt. Spruce Green	34 to 38"	36"	30	PR	137.47
8415-01-619-3414	2295	Lt. Spruce Green	36 to 40"	36"	30	PR	137.47
8415-01-619-3415	2296	Lt. Spruce Green	38 to 42"	36"	30	PR	137.47

Packs and Accessories

Pack, Personal Gear (Personal Gear Pack)

Heavyweight, urethane-coated nylon duck pack carries up to 40 lbs. of gear. Styled with a main compartment, a sleeping bag compartment, and front and back pockets. Features adjustable shoulder straps that hide away in back pocket and buckles that allow pack to be attached to a firefighter's field pack. Includes carrying handle on side of bag. Forest Service Spec 5100-215. (NFES #1855)



■ Std. pack: 10

8465-01-141-2321	AbilityOne	Red	EA	\$54.57
------------------	------------	-----	----	---------

Field Pack (Packsack)

Intended for use in a wide variety of field-related activities, including wildland fire suppression. The top of the packsack closes with a drawstring and a zippered pocket flap. Includes shoulder straps and a chest strap. Heavy-duty nylon duck cloth. This is a component of Mop-Up Kit NSN 4210-01-321-4206. Forest Service Spec 5100-214. (NFES #0744)



■ Std. pack: 20

8465-00-205-3493	AbilityOne	Bottle Green	EA	\$38.90
------------------	------------	--------------	----	---------

Tent, Bag, Personal Gear Pack (Tent Bag)

Personal gear pack tent bag is designed to hold a one-person tent that compacts into a 28 x 5" size (tent not included). For attachment to Personal Gear Pack NSN 8465-01-141-2321. Forest Service Spec 5100-215B. Drawing MTDC 949. (NFES #0281)



■ Std. pack: 10

8465-01-463-4649	AbilityOne	Red	EA	\$26.29
------------------	------------	-----	----	---------

For your convenience, this catalog is also available in electronic form.

To receive a PDF copy contact

DLA WFPP at

DLAWFPP@dla.mil

Pack, Fireline, Complete (Fireline Pack - Complete)

Gear carrier is designed for use by wildland firefighters. Fireline pack includes a main compartment (measuring approximately 1,000 cubic inches, with top rain skirt allowing expansion), two side pockets (which can hold two one-quart water bottles each), two lid pockets, two fusee pockets, and a belt pocket (all totaling 2,100 cubic inches). Bottom-mounted fire shelter sleeve can accommodate either a new-generation or old-design fire shelter. Lumbar style pack hangs low on back for improved linedigging ergonomics. Includes two canteen cases and a stuff sack. Forest Service Spec 5100-605. (NFES #0674)



■ Std. pack: 10

8465-01-503-4484 Blue EA \$125.82

Pack, Fireline (Main Fireline Pack)

Replacement nylon duck fireline pack for Fireline Pack (Complete) NSN 8465-01-503-4484. Main pack only. Does not include the canteen cases or stuff sack. Forest Service Spec 5100-605. (NFES #0678)

■ Std. pack: 10

8465-01-503-4488 Blue EA \$102.84

Prices in this catalog are subject to change. Current prices are available at <https://dod.emall.dla.mil/>

Case, Carrying, Pack (Fireline Pack Carrying Case - Stuff Sack)

Cylindrical nylon duck carrying case (stuff sack) is designed for use with Main Fireline Pack NSN 8465-01-503-4488. Forest Service Spec 5100-605. (NFES #0677)



■ Std. pack: 200

8465-01-503-4482 Blue EA \$7.64

Case, Canteen (Fireline Pack Canteen Case)

Replacement canteen case for Main Fireline Pack NSN 8465-01-503-4488. Made from nylon duck and webbing. Forest Service Spec 5100-605. (NFES #0675)



■ Std. pack: 200

8465-01-503-4479 Blue EA \$6.28

Canteens, Water Bags and Accessories

Canteen, Water (Canteen)

For carrying water, this canteen features a screw cap that is attached by a flexible plastic strap or a rust resistant metal chain and an adjustable over-the-shoulder carrying strap. It is made of polyethylene plastic and the sides are covered by polystyrene disks for protection against punctures and abrasion. (NFES #1063)



■ Std. pack: 10

8465-00-082-3054 Capacity: 4 qt. EA \$10.61

Rigid plastic water bottle with cap is rectangular and disposable. Measures 2-1/2 x 3-3/4 x 8-1/4" overall. Comes with a protective cover that encloses the entire canteen. (NFES #0038)



■ Std. pack: 100

8465-01-062-5854 AbilityOne Opaque White Capacity: 1 qt. EA \$5.28

Rigid plastic water bottle with cap is rectangular and disposable. Measures 2-1/2 x 3-3/4 x 8-1/4". Forest Service Spec 5100-84. (For cover, see Canteen Case NSN 8465-00-118-4956.) (NFES #0037)



■ Std. pack: 100

8465-00-102-6381 Opaque White Capacity: 1 qt. EA \$0.59

Cover, Water Canteen (Canteen Case)

Designed to cover Canteen NSN 8465-00-102-6381, this medium-weight cotton duck case features snap fasteners to hold the canteen in place. Web loops attach to belt. Silkscreen reads: "FSS." Forest Service Spec 5100-85. (NFES #0054)



■ Std. pack: 50 or 300

8465-00-118-4956 AbilityOne White Capacity: 1 qt. EA \$2.73

Bag, Water Carrying (Water Bag)

This backpack-style bag for drinking water comes complete with two replaceable inner bladders and removable straps. Nylon duck outer covering includes a pocket to store extra bladder. Includes an exterior spigot. MTDC Drawing 834. (Replacement liner may be purchased as NSN 8465-01-310-5130.) (NFES #0912)



■ Std. pack: 200

8465-01-310-1259 Blue Capacity: 5 gal. EA \$52.42

Liner, Bag, Water (Water Bag Liner)

Replacement drinking water bladder has attached rubber spigot. (For use with Water Bag NSN 8465-01-310-1259.) (NFES #0911)



Std. pack: 10 or 100

8465-01-310-5130 Clear or Silver Capacity: 5 gal. EA \$2.74

Waterbag, Drinking (Drinking Water Bag)

For use in transporting drinking water only. Includes integral sling straps with a 4" steel cargo ring. Intended for transport by truck or helicopter external load. Complete unit includes two replaceable PVC liners (NSN 8465-01-369-2147), one fill opening and two drain openings, each with a four-foot dispenser hose with fittings for proper attachment and flow control. Has three fill-and-use openings. All accessories and extra liner packed in the water bag's external pocket. Forest Service Spec 5100-94. (NFES #0435)



Std. pack: 1

8465-01-369-3557 Royal Blue Capacity: 55 gal. EA \$219.01

Liner, Waterbag (Drinking Water Bag Liner)

Replacement plastic liner for 55-gallon Drinking Water Bag NSN 8465-01-369-3557. For potable water use only. Forest Service Spec 5100-95. (NFES #0436)



Std. pack: 5

8465-01-369-2147 EA \$60.66

Waterbag, Suppression (Suppression Water Bag)

For wildland fire suppression use only. Has integral sling straps with a 4" steel cargo ring. Intended for transport by truck or helicopter external load. Complete unit includes two replaceable liners (NSN 8465-01-369-2149), one fill opening, and one drain opening; with a four-foot dispenser hose with fittings for proper attachment and flow control. Has two fill-and-use openings. All accessories packed in the water bag's external pocket. Forest Service Spec 5100-94. (NFES # 0437)



Std. pack: 1

8465-01-369-2148 Yellow Capacity: 55 gal. EA \$166.56

Liner, Waterbag (Suppression Water Bag Liner Suppression)

Replacement liner for 55-gallon Suppression Water Bag NSN 8465-01-369-2148. Forest Service Spec 5100-95. (NFES #0438)



Std. pack: 5

8465-01-369-2149 EA \$27.75

Kit, Water Container (Water Jug)

Unassembled reservoir consists of a five-gallon plastic liquid container with a 38mm opening, a white 38mm polyethylene cap, and a knockdown water container box. Box is made of plain brown cardboard (weather-resistant) with openings for a water spout and handles. (NFES #0048)



Std. pack: 1 (20 EA/BX)

7310-00-128-6837 Capacity: 5 gal. EA \$133.53

Container, Plastic, Moulded (Plastic Storage Container Plastic Storage)

This molded, plastic container stores foods and beverages and features a contoured handle and spout.



Made of high-density plastic. Without fiberboard carton. (NFES #2058)

Std. pack: 6

8115-00-145-0038 White Capacity: 5 gal. EA \$21.02

Container, Hot Or Cold Beverage (Hot-Beverage Container)

Each box contains 20 completely unassembled hot-beverage containers: 20 plastic bags with caps, 20 plastic faucets, and 20 beverage boxes with 20 reinforcement inserts. Bag capacity is approximately four gallons. Useful for delivering hot beverages to isolated firefighters. (NFES #0244)

7360-01-606-2663 Z316937-1 BX(contains 20 EA) \$271.20

Container, Hot Or Cold Food (Hot-Food Container)

Each box includes unassembled components to make 20 containers. Master carton includes 20 four-gallon plastic bags, 30 bag seals, 20 corrugated overpack boxes, 40 box-reinforcement inserts, and instruction sheet. Useful for delivering hot food to isolated firefighters. (NFES #0246)

7360-01-606-2670 Z-316938-1 BX(contains 20 EA) \$271.20



Food-Handling Equipment

Dinnerware Kit (Disposable Dinnerware)



A. Kit contains 60 each of the following disposable items: food cups; hot/cold cups; sets of flatware; paper table napkins; paper plates and inserts. Packaged in a fiberboard box that contains a 25-person, one-day, two-meal kit. (NFES #0135)

■ Std. pack: 1

7360-00-139-0480

AbilityOne

KT \$50.92

Meal, Individual (Food Rations, Meals Ready to Eat [MRE])



B. Each assorted meal is complete (except for water) and designed for one person. Meal, ready-to-eat (MRE) food is ideal under conditions that preclude preparation. Each meal is different and consists of meat, fruit, dessert, bakery item, spoon, and a condiment/accessory packet (coffee, cream, sugar, salt, chewing gum, toilet tissue, matches, hand cleaner, etc.). Includes a flameless heater. (NFES #1842)

Note: MREs provided by DLA may have limited remaining shelf life (i.e., six months) when received before requiring inspection and shelf life extension. MREs should be purchased only for immediate short-term needs and not for long-term storage.

ⓘ 36-month maximum shelf life (not extendable)

■ Std. pack: 1 (12 EA/BX)

8970-00-149-1094

AbilityOne

BX(contains 12 EA) \$100.28

Sleeping Bags and Accessories

Sleeping Bag (Firefighter's Sleeping Bag)

C. Summer-weight sleeping bag features a shell that is composed of nylon taffeta and is royal blue outside and gray inside. Features 2.3 lbs. of hollow polyester fiber batting and is suitable for use in temperatures down to 45° F. Weight: 3 lbs. Forest Service Spec 5100-38. (NFES #1062)

■ Std. pack: 10

8465-00-081-0798

AbilityOne

80 x 34"

EA \$34.04



Sleeping Bag, Cold Weather (Firefighter's Sleeping Bag)

Mummy-style sleeping bag is for use by wildland firefighters in cold weather and is comfortable to 30° F. The size is 81" long and 35" wide inside, 60" long zipper with draft tube, full hood with drawstring closure and neck tube. Color foliage green. Meets Federal/Commercial Flammability Standards in CPAI-75. (NFES #0128)

■ Std. pack: 5

8465-01-602-3355

EA \$91.04

Mat, Sleeping

A. When used in conjunction with a sleeping bag, EVA pad insulates the sleeper well from the cold, hard ground. Forest Service Spec 5100-522. (NFES #1566)

■ Std. pack: 1

8465-01-109-3369			EA	\$9.09
------------------	--	--	----	--------



Fly, Tent (Tent Fly)

General-purpose, heavy-duty tent fly is designed for use in wildland firefighting camps. Water-repellent and flame-retardant. The tent fly features brass grommets for tie-down ropes.

B. Type I. Yellow oxford nylon cloth with polyurethane coating. Includes red polyurethane-coated nylon duck cloth carrying case, ropes and rope tensioners. Forest Service Spec 5100-31. (NFES #0070)

■ Std. pack: 1

8340-00-102-6370	Yellow	16 x 24 ft.	EA	\$247.72
------------------	--------	-------------	----	----------



C. Type II, Blue ripstop nylon with polyurethane coating. Can be used as ground cloth. Forest Service Spec 5100-31. (NFES #1521)

■ Std. pack: 1

8340-01-185-5512	Blue	9 x 10 ft.	EA	\$57.13
------------------	------	------------	----	---------



Pole, Tent (Ridge Pole Ridge)

D. Aluminum ridge pole for use with Forest Service wall tent and tent flies. Components: two end sections; three mid-sections; one connector. Each end and mid-section is 42" long; the connector section is 22". Forest Service MEDC Drawing 694. (NFES #0089)

■ Std. pack: 1

8340-01-107-5694		Length: 16 ft.	EA	\$108.05
------------------	--	----------------	----	----------

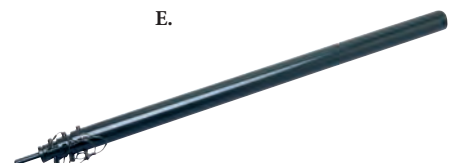


Pole, Tent (Tent Pole)

E. Telescoping upright aluminum tent pole is for use with tent fly and wall tent. MIL-P-40148. (NFES #0083)

■ Std. pack: 6

8340-00-753-6574		Length: 10'6" (extended), 39-7/8" (fully retracted)	EA	\$38.27
------------------	--	---	----	---------



Personal Grooming Aids

Towel, Paper (Paper Towels)

Absorbent paper towels for kitchen use. Perforated sheets in roll form on a paperboard core. (NFES #0240)



① Contains 40% Recovered Material, Which Includes 40% Postconsumer Material

■ Std. pack: 1 (30 RO/BX)



8540-01-169-9010 White 11 x 9" BX(contains 30 EA) \$30.36

Wash Kit Assembly (Personal Wash Kit)

This convenient kit contains the following: one bar of soap; one plastic soap holder; two bath towels; one face towel; one wash cloth; one plastic wash basin with a six-quart capacity; one small poly bag; one large poly bag; and a tie. MEDC Drawing 503. (NFES #0126)



■ Std. pack: 10 or 100

7360-00-139-1063 AbilityOne KT \$5.91

Towel, Paper (Bath Towel - Disposable)

Heavy-duty, two-ply bath towel is made of disposable paper and features mesh reinforcement between the plies. (NFES #1038)



① 100% Recycled, Which Includes 40% Postconsumer Material

■ Std. pack: 1 (300 EA/BX)



7210-01-029-0370 AbilityOne White 39 x 22" BX(contains 300 EA) \$99.69

Towelette, Skin Cleansing (Disposable Wash Cloth)

Personal-use, disposable wash cloth contains a gentle cleansing formula with aloe. Suitable to use on all areas of the body, including face. Has a pleasant fragrance and is hypoallergenic and alcohol- and latex-free. Individually packaged towelette can be used in hospitals and clinics. Ideal for use in camping, sports, travel and fitness activities. (NFES #0206)

① 36-month maximum shelf life (extendable)

8520-01-609-2831 U12095 or equal 10 x 11-1/2" BX(contains 400 EA) \$77.94

Packaging Material

Convenient for repacking wildfire equipment, the double-walled box has a bursting strength of 500 psi and falls into the domestic class. Cover: Grade 350. Type CF. Half-slotted box with cover. Style HSCC.



Box, Shipping (Corrugated Box)

Double-walled box has a bursting strength of 275 psi and falls into the domestic class. Type CF. Regular-slotted box. Style RSC.



Useful for repacking coffee pots. (NFES #0500)

① Contains 25% Recovered Material, Which Includes 25% Postconsumer Material

■ Std. pack: 1 (10 EA/BD)



8115-00-139-0652 22 x 22 x 36" BD(contains 10 EA) \$110.54

Useful for repacking firefighter sleeping bags. (NFES #0513)

① Contains 25% Recovered Material, Which Includes 25% Postconsumer Material

■ Std. pack: 1 (10 EA/BD)



8115-01-290-9543 36-1/2 x 24-1/2 x 17" BD(contains 10 EA) \$82.89

Useful for repacking 50 sleeping pads (76 X 24-1/2 X 21-1/2"). (NFES #8213)

① Contains 25% Recovered Material, Which Includes 25% Postconsumer Material

■ Std. pack: 1 (10 EA/BD)



8115-01-642-9819 76 x 24-1/2 x 21-1/2" BD(contains 10 EA) \$248.02

Convenient for repacking wildfire equipment, the double-walled box has a bursting strength of 350 psi and falls into the domestic class. Grade: 350. Regular-slotted box. Style RSC.

Useful for repacking 50 sleeping pads (75 x 23"). (NFES #0134)

① Contains 25% Recovered Material, Which Includes 25% Postconsumer Material

■ Std. pack: 1 (10 EA/BD)



8115-01-381-6529 76 x 22-1/2 x 20-1/2" BD(contains 10 EA) \$248.02

Useful for repacking canteens. Type CF. (NFES #2006)

① Contains 25% Recovered Material, Which Includes 25% Postconsumer Material

■ Std. pack: 1 (10 EA/BD)



8115-00-139-0722 23 x 19 x 10" BD(contains 10 EA) \$35.27

Weather-resistant, single-walled box has a bursting strength of 350 psi. Regular-slotted box. Style RSC.

Useful for repacking firefighter jeans. (NFES #2030)

① Contains 25% Recovered Material, Which Includes 25% Postconsumer Material

📦 Std. pack: 1 (15 EA/BD)

♻️

8115-00-183-9481	AbilityOne	24 x 16 x 12"	BD(contains 15 EA)	\$83.74
------------------	------------	---------------	--------------------	---------

Useful for repacking firefighter shirts. (NFES #2007)

① Contains 25% Recovered Material, Which Includes 25% Postconsumer Material

📦 Std. pack: 1 (5 EA/BD)

♻️

8115-00-292-0123	AbilityOne	24 x 16 x 16"	BD(contains 5 EA)	\$42.42
------------------	------------	---------------	-------------------	---------

Convenient for repacking wildfire equipment, the double-walled box has a bursting strength of 500 psi and falls into the domestic class. Type CF. Regular-slotted box. Style RSC.

Useful for repacking firefighting water pumps. (NFES #0643)

① Contains 25% Recovered Material, Which Includes 25% Postconsumer Material

📦 Std. pack: 1 (10 EA/BD)

♻️

8115-00-139-0749		41 x 15 x 19"	BD(contains 10 EA)	\$67.77
------------------	--	---------------	--------------------	---------

Useful as a general-purpose repack carton. (NFES #0353)

① Contains 25% Recovered Material, Which Includes 25% Postconsumer Material

📦 Std. pack: 1 (10 EA/BD)

♻️

8115-00-139-0706		39 x 13 x 13"	BD(contains 10 EA)	\$60.02
------------------	--	---------------	--------------------	---------

Useful for repacking general-purpose sleeping bags. (NFES #0644)

① Contains 25% Recovered Material, Which Includes 25% Postconsumer Material

📦 Std. pack: 1 (10 EA/BD)

♻️

8115-00-139-0691		33 x 16 x 22"	BD(contains 10 EA)	\$81.15
------------------	--	---------------	--------------------	---------

Provided with handhold cut-outs. Useful for repacking chainsaw kits. (NFES #0645)

① Contains 25% Recovered Material, Which Includes 25% Postconsumer Material

📦 Std. pack: 1 (10 EA/BD)

♻️

8115-00-504-1463		42 x 13-1/2 x 14"	BD(contains 10 EA)	\$65.53
------------------	--	-------------------	--------------------	---------

Useful for repacking firefighting shovels. (NFES #0337)

① Contains 25% Recovered Material, Which Includes 25% Postconsumer Material

📦 Std. pack: 1 (10 EA/BD)

♻️

8115-00-139-0689		55 x 12-1/2 x 11-3/4"	BD(contains 10 EA)	\$141.64
------------------	--	-----------------------	--------------------	----------



Convenient for repacking wildfire equipment, full-telescoping box (full-depth lid) weather-resistant double wall fiberboard has a bursting strength of 600 psi. Grade V11c. Type CF. Style FTC/0301.

Useful for repacking Pulaski tools. (NFES #0338)

① Contains 25% Recovered Material, Which Includes 25% Postconsumer Material

📦 Std. pack: 1 (10 EA/BD)

♻️

8115-00-139-0673		37-1/2 x 18-1/2 x 8"	BD(contains 10 EA)	\$132.57
------------------	--	----------------------	--------------------	----------

Useful for repacking McLeod tools. (NFES #0305)

① Contains 25% Recovered Material, Which Includes 25% Postconsumer Material

📦 Std. pack: 1 (10 EA/BD)

♻️

8115-00-139-0690		56 x 20 x 11"	BD(contains 10 EA)	\$280.13
------------------	--	---------------	--------------------	----------

Useful for repacking fireline combination tool. (NFES #0384)

① Contains 25% Recovered Material, Which Includes 25% Postconsumer Material

📦 Std. pack: 1 (10 EA/BD)

♻️

8115-01-307-2951		46 x 11 x 8"	BD(contains 10 EA)	\$94.66
------------------	--	--------------	--------------------	---------

Convenient for repacking wildfire equipment, full-telescoping box (full-depth lid) weather-resistant double wall fiberboard has a bursting strength of 600 psi. Grade V11c. Type CF. Style FTC/0301.

Useful for repacking backfiring fuses. (NFES #1580)

① Contains 25% Recovered Material, Which Includes 25% Postconsumer Material

📦 Std. pack: 1 (10 EA/BD)

♻️

8115-01-219-5749		14-1/2 x 12 x 5-3/4"	BD(contains 10 EA)	\$223.54
------------------	--	----------------------	--------------------	----------

Box, Shipping (Corrugated Box)

This corrugated, fiberboard shipping box features overlapped, glued joints or butted, taped joints. (Dimensions shown below are inside dimensions in order of length, width and depth.)



Single-walled weather-resistant box.

Regular-slotted box has a bursting strength of 400 psi. With four flaps on top and on bottom; outer flaps meet when closed. Style RSC. Maximum weight of box and contents is 140 lbs. Useful for repacking fly tent. (NFES #0823)

① Contains 30% Recovered Material, Which Includes 30% Postconsumer Material

♻️

8115-00-417-9318	AbilityOne	15 x 15 x 10"	BD(contains 25 EA)	\$93.96
------------------	------------	---------------	--------------------	---------

Seal, Antipilferage (Boxcar Seal Boxcar Seal)

This self-locking, boxcar-style seal discourages pilfering. Metal strap is passed through a hasp fastener and ends of strap are locked together inside metal box when closed, providing a sturdy seal. For sealing fire caches, toolboxes, mess kits, and more. Reads: "U.S. Forest Service" and numbered in a series. Federal Spec FF-S-2738. (NFES #1938)



Std. pack: 50

5340-00-901-8105 Length: 8-1/2"; Width: 0.3"; Thickness 0.03" HD \$5.71

Pails



Pail, Plastic Collapsible (Collapsible Pail)

Round, collapsible pail is made of vinyl-coated nylon scrim. With a stiffened and reinforced top rim. Approximate size is 9" in diameter and 11" high. High tensile strength. Leak-proof seams. (NFES #0141)

Std. pack: 10 or 100

8465-00-128-6928 Yellow Capacity: 3 gal. EA \$8.05

Weather Gear

Belt, Weather Kit (Weather Observation Kit)

A. A complete observing kit with everything needed to measure temperature, relative humidity and wind velocity. Consists of Weather Kit Case NSN 8465-00-521-3057, Smoke Chaser's Compass NSN 6605-00-553-8795, Wind Speed Indicator NSN 6680-00-833-7010, and Sling Psychrometer NSN 6685-00-826-1662 (mercury-free). Also contains 1-oz. plastic Screw-Cap-Bottle NSN 8125-00-824-9058, Wood Pencil NSN 7510-00-281-5234, notebook, and humidity and dew-point tables. Forest Service Spec 5100-150, MEDC-531. (NFES #1050)

Std. pack: 10



6660-01-024-2638 KT \$131.00

Case, Carrying (Weather Kit Case)

B. Replacement case for belt weather kit. Cloth case's pockets accommodate a wind meter, a compass, a psychrometer, a writing board, a notebook, pencils and a water bottle. Includes a snap-close cover flap and belt loops. Forest Service Spec 5100-450. (NFES #1154)

Std. pack: 25

8465-00-521-3057 AbilityOne EA \$17.56

Psychrometer

C. As a component of the weather observation kit, this pocket-size psychrometer measures relative humidity of atmospheric air. Two non-mercury thermometers on a metal mounting plate allow for dry- and wet-bulb readings. Thermometer range is 30 to 110° F. Features a sling handle for whirling and comes in a case. Includes plastic calculator for determining relative humidity. (NFES #1156)

Std. pack: 50



6685-00-826-1662 EA \$52.07



Meter, Air Velocity (Wind Speed Indicator)

Floating ball-type anemometer is for determining wind velocity in miles per hour with low- and high-range scales. This component of the weather observation kit has plastic and metal construction. Includes carrying case, instructions and three cleaning rods. Forest Service Spec 5100-454. (NFES #1155)

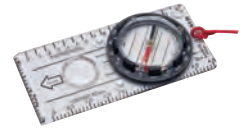


Std. pack: 12 or 72

6680-00-833-7010 8 x 3 x 3/4" EA \$21.56

Compass, Magnetic, Unmounted (Smoke Chaser's Compass)

Smoke chaser's compass has a clear, flat, plastic base plate, liquid-filled compass capsule, neck cord, and set of instructions. Base has a built-in magnifying glass. (NFES #1814)



Std. pack: 20

6605-00-553-8795 4 x 2 x 1/2" EA \$12.38

For your convenience, this catalog is also available in electronic form. To receive a PDF copy contact DLA WFPP at DLAWFPP@dla.mil

Compass, Magnetic, Unmounted (Magnetic Compass)

Ideal for hiking and general forestry, this compass features a clear plastic base plate with hinged cover, neck cord, and set of instructions. Cover contains a mirror on the inside. (NFES #0047)



Std. pack: 20

6605-00-171-5121 Black EA \$26.65

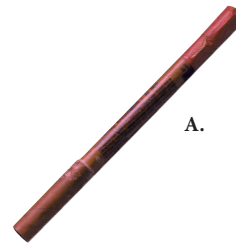
Ignition Devices

Fusee, Backfiring (Backfiring Fusee Backfiring)

A. For starting backfires, this device is simple to use and features positive ignition action similar to highway flares. Ferrule in base accommodates stick or handle extension. Burns for 10 minutes. Forest Service Spec 5100-360. (NFES #0105)

Std. pack: 1 (72 EA/BX)

6260-00-294-1279 **MSDS** BX(contains 72 EA) \$89.47



A.

Torch, Drip (Drip Torch)

B. Drip torch is designed for igniting fires in vegetation with a mixture of diesel fuel and gasoline. Aluminum tank and handle assembly. Tank capacity is between 1-1/8 and 1-3/8 gallons. Torch has a 6" diameter. Spout/igniter assembly can be stowed inside of the fuel tank when torch is not in use. Spout with steel fuel trap extends a minimum of 10" from the top of the tank to the end of the nozzle with the igniter extending beyond the nozzle. Fuel trap in the spout and check valve assembly in the tank cover provides flashback protection. Breather valve assembly provides smooth flow of fuel when torch is in use. Meets DOT requirements for transport of flammable liquids. Forest Service Spec 5100-614. (NFES #0241)

4210-01-558-9951 Red EA \$113.13



B.

Aviation Equipment

Line, Lead (Cargo Lead Line)

While the user is transporting cargo via helicopter, this lead line can be used to keep load at a fixed distance below. Has a 3,000-lb. capacity. (For use with light- and medium-class helicopters only.) Forest Service Spec 5100-503. (NFES #0528)



■ Std. pack: 5

1670-01-029-8554 Length: 12 ft. EA \$94.79

Swivel, Cargo (Cargo Swivel)

Cargo swivel is for use when freight is transported by helicopter with external cargo hook attachments, swivel permits sling lines to rotate freely. Prevents lines from twisting and breaking. Has a 3,000-lb. capacity. (For use with light- and medium-class helicopters only.) Forest Service Spec 5100-501. (NFES #0526)



■ Std. pack: 6

1670-01-029-8555 EA \$329.21

Net, Cargo, Aerial Delivery (Cargo Net)

For the transport and delivery of freight suspended from beneath helicopters. Net is round with drawstring, with a 3,000-lb. capacity. (For use with light- and medium-class helicopters only.) Forest Service Spec 5100-502. (NFES #0531)



■ Std. pack: 1

1670-01-029-8556 Diameter: 12-1/2 ft. EA \$434.56

Message Dropper, PLA (Message Dropper Pouch)

This plastic pouch is designed to hold messages dropped from aircraft. Small, clear vinyl bag also holds ballast (sand). Comes with plastic streamer (international orange or yellow), message blanks and instructions. Forest Service Spec 5100-110. (NFES #0284)



■ Std. pack: 25 or 100

1670-00-797-4495 AbilityOne EA \$8.33

Marking Material

Ribbon, Flagging, Surveyor's (Flagging Ribbon)

A. "Hazards" flagging ribbon is black with yellow 1/2" diagonal stripes every half inch. (NFES #0267)

ⓘ 12-month maximum shelf life (extendable)

■ Std. pack: 12

9905-01-523-2324 Length: 300 ft.; Width: 1-3/16" BX(contains 12 EA) \$18.66

B. Fluorescent pink ribbon features the words "Escape Route" in bold black capital lettering 1" high (repeated every 20"). (NFES #0566)

ⓘ 12-month maximum shelf life (extendable)

■ Std. pack: 12

9905-01-523-2578 Length: 150 ft.; Width: 1-1/2" BX(contains 9 EA) \$18.75

C. Fluorescent pink ribbon features the words "Escape Route" in bold black capital lettering 1" high (repeated every 20").

Fluorescent color (often referred to as "glow colors"). (NFES #2396)

ⓘ 12-month maximum shelf life (extendable)

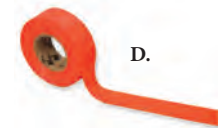
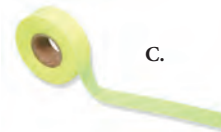
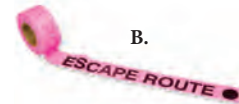
9905-00-196-1068 Chartreuse Length: 50 yards; Width: 1-3/16" BX(contains 9 EA) \$12.45

D. (NFES #2398)

9905-01-458-2060 Fluorescent Orange Length: 150 ft.; Width: 1-3/16" BX(contains 12 EA) \$19.25

E. (NFES #2401)

9905-01-458-2059 Fluorescent Pink Length: 150 ft.; Width: 1-3/16" BX(contains 12 EA) \$19.25



Incident Sign Kit Components

Sign (Forest Service Fire Incident Sign)

Diamond-shaped base, folding plastic-vinyl sign for fire incident. MTDC drawing 1083. Forest Service Spec 5100-618.

Inscription: Fire Activity Ahead. (NFES #1141)

■ *Std. pack: 6*

9905-01-595-8890	36 x 36"	EA	\$86.44
------------------	----------	----	---------

Inscription: Fire Traffic Entering Road. (NFES #1142)

■ *Std. pack: 6*

9905-01-595-8873	36 x 36"	EA	\$75.97
------------------	----------	----	---------

Square base, plastic-vinyl folding sign for fire incident. MTDC drawing 1082. Forest Service Spec 5100-618.

Inscription: Incident Base. (NFES #1124)

■ *Std. pack: 6*

9905-01-595-8884	36 x 36"	EA	\$96.98
------------------	----------	----	---------

Inscription: End Fire Activity. (NFES #1126)

■ *Std. pack: 6*

9905-01-595-8875	36 x 36"	EA	\$73.87
------------------	----------	----	---------

Inscription: Staging Area. (NFES #1122)

■ *Std. pack: 6*

9905-01-595-8885	36 x 36"	EA	\$108.44
------------------	----------	----	----------

Inscription: Staging Area. (NFES #1123)

■ *Std. pack: 6*

9905-01-595-8887	36 x 36"	EA	\$130.28
------------------	----------	----	----------

Inscription: Fire Camp. (NFES #1121)

■ *Std. pack: 6*

9905-01-595-8889	36 x 36"	EA	\$76.60
------------------	----------	----	---------

Inscription: Parking Area. (NFES #1125)

■ *Std. pack: 6*

9905-01-595-8888	36 x 36"	EA	\$94.37
------------------	----------	----	---------

Overlay patch, plastic-vinyl sign for fire incident. MTDC drawing 1081. Forest Service Spec 5100-618.

Inscription: Arrow (symbol). (NFES #1194)

■ *Std. pack: 20*

9905-01-595-8879	8 x 29-3/4"	BX(contains 10 EA)	\$21.11
------------------	-------------	--------------------	---------

Inscription: Emergency. (NFES #1192)

■ *Std. pack: 20*

9905-01-595-8881	8 x 29-3/4"	EA	\$22.14
------------------	-------------	----	---------

Blank; no inscription. (NFES #1193)

■ *Std. pack: 20*

9905-01-595-8876	8 x 29-3/4"	EA	\$21.53
------------------	-------------	----	---------



Square-base, plastic-vinyl (corrugated) sign for fire incident. MTDC drawing 1091. Forest Service Spec 5100-619.

Inscription: Arrow (symbol). (NFES #1148)

■ *Std. pack: 1*

9905-01-595-8880	12 x 12"	BX(contains 10 EA)	\$167.86
------------------	----------	--------------------	----------

Rectangular-base, plastic-vinyl sign for fire incident. MTDC drawing 1090. Forest Service Spec 5100-619.

Inscription: Drop Points. (NFES #1147)

■ *Std. pack: 1*

9905-01-595-8877	18 x 24"	BX(contains 10 EA)	\$351.05
------------------	----------	--------------------	----------

Diamond-shaped base, folding plastic-vinyl sign for fire incident. MTDC drawing 1083. Forest Service Spec 5100-618.

Inscription: Drop Point. (NFES #1146)

■ *Std. pack: 1*

9905-01-595-8872	12 x 18"	BX(contains 10 EA)	\$123.46
------------------	----------	--------------------	----------

Holder, Sign (Sign Post Adapter Clamp For Fire Incident Signs Sign Post Adapter)



Sign post adapter clamp for fire incident sign. MTDC drawing 1092. Forest Service Spec 5100-620. (NFES #0983)

■ *Std. pack: 10*

9905-01-595-8886		EA	\$19.17
------------------	--	----	---------

Alphabetical Index

A

Applicator, Water 11

B

Bag, Backpack, Nylon Duck 12
Bag, Fuel Bottle 15
Bag, Polyvinyl, Practice, Fire Shelter, M-2002 20
Bag, Water Carrying 24
Band, Retaining Fire Hose 7
Battery, Nonrechargeable (7.5 V) 15
Battery, Nonrechargeable (AA) 15
Battery, Nonrechargeable (C Battery) 15
Belt, Weather Kit 30
Bottle, Fuel 15
Box, Shipping 28, 29

C

Can, Gasoline, Portable Fire Pump 13
Canteen, Water 24
Cap, Hose 8
Case, Canteen 24
Case, Carrying 30
Case, Carrying, Fire 18
Case, Carrying, Pack 24
Case, Carrying, Practice, Fire Shelter, M2002 19
Chaps, Protective 14
Chest Harness, Fire Shelter 20
Clamp, Fire Hose, Shutoff 10
Combination Tool, Fire Fighter's 5
Compass, Magnetic, Unmounted 31
Container, Hot Or Cold Beverage 25
Container, Hot Or Cold Food 25
Container, Plastic, Moulded 25
Coupling Half, Quick Disconnect 12
Coupling, Hose, Fire Fighting 8
Cover, Water Canteen 24

D

Dinnerware Kit 26

E

Extinguisher, Fire 5

F

Field Pack 23
File Guide, Clamp Chain Saw 14
File, Hand 14

First Aid Kit, General Purpose 16, 17
Fly, Tent 27
Fusee, Backfiring 31

G

Gage, Sharpening 5
Gasket, Fire Hose 7
Gasoline Line, Fire Pump 13
Gloves, Leather 21
Goggles, Industrial 21

H

Handle, File 14
Handle, Pulaski Tool 6
Handle, Replacement, Combi-Tool 6
Harness, Waterbag 12
Headlamp, Firefighter 16
Helmet, Fireman's 20
Holder, Sign 33
Hose Assembly, Nonmetallic, Fire Fighting 7
Hose Assembly, Nonmetallic Synthetic 7

I

Increaser, Hose, Fire Fighting 9

L

Kit, Water Container 25
Light, Chemiluminescent 16
Line, Lead 32
Liner, Backpack, Pump Bag 12
Liner, Bag, Water 25
Liner, Carrying Case 18
Liner, Waterbag 25

M

Mat, Sleeping 27
Mattock 5
Meal, Individual 26
Message Dropper, PLA 32
Meter, Air Velocity 31
Mop-Up Kit, Lateral Line, 3 Wand 10, 11

N

Net, Cargo, Aerial Delivery 32
Nozzle, Fire Equipment 9

P

Pack, Fireline..... 24
 Pack, Fireline, Complete..... 24
 Pack, Personal Gear..... 23
 Pail, Plastic Collapsible..... 30
 Pants, Flame Resistant BDU Aramid..... 22, 23
 Plug, Ear..... 21
 Pole, Tent 27
 Protection Kit, Biological Hazard..... 17
 Psychrometer 30
 Pump, Back Pack 12
 Pump, Reciprocating..... 12
 Pump Unit, Centrifugal..... 13

R

Rake, Forest Fire 5
 Reducer, Hose, Fire Fighting..... 8
 Ribbon, Flagging, Surveyor's..... 32

S

Safety Can..... 13
 Seal, Antipilferage..... 30
 Sheath, Fire, Rake, Plastic..... 6
 Sheath, McLeod Tool 6
 Sheath, Pulaski Tool 6
 Sheath, Shovel Hand 6
 Shelter, Fire, M-2002 18
 Shelter, Fire, Practice, Complete, M2002 19
 Shelter, Fire, Practice. Complete, M2002 18
 Shelter, Fire, Practice, M2002 19
 Shirt, Fireman's 22
 Shovel, Hand 5
 Shroud, Face And Neck, Wildland Firefighter 20

Shut-Off, Valve Ball..... 10
 Sign..... 33
 Sleeping Bag 26
 Sleeping Bag, Cold Weather 26
 Spectacles, Industrial 21
 Spill Containment Berm, Portable 13
 Swabs, Sting Kill 16
 Swivel, Cargo..... 32

T

Tee, Pipe to Hose , Fire Fighting..... 9
 Tee, Pipe to Hose, Fire Fighting..... 9
 Tent, Bag, Personal Gear Pack 23
 Tip, Applicator 11
 Tip, Hose, Fire Fighting..... 10
 Torch, Drip 31
 Towelette, Skin Cleansing..... 28
 Towel, Paper 28

V

Valve, Foot..... 10
 Valve, Shut-Off, Garden Hose..... 11

W

Wash Kit Assembly..... 28
 Waterbag, Drinking..... 25
 Waterbag, Suppression..... 25
 Wedge, Plastic Felling 14
 Wrench, Spanner 10
 Wye Connection, Fire Hose, Valved 10
 Wye, Garden Hose..... 11