

Appendix B: Maps

The following maps come from a variety of sources. Most maps include an abstract that details the data sources, purpose and originator. Background into their use and function is located where the maps are individually referenced in the Assessment.

List of Maps

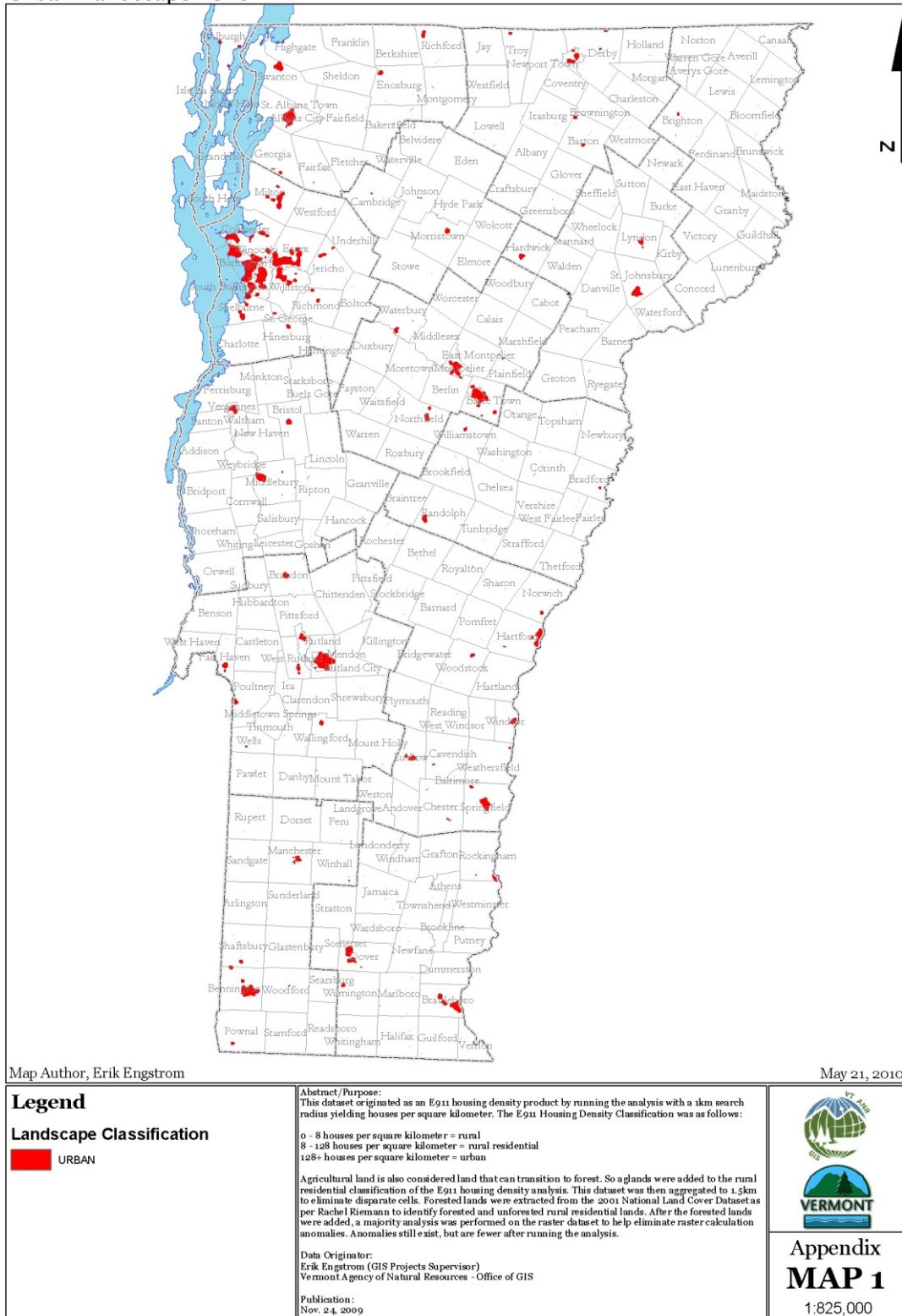
MAP 1: URBAN LANDSCAPE ZONE.....	VI
MAP 2: RURAL RESIDENTIAL LANDSCAPE ZONE	VII
MAP 3: RURAL LANDSCAPE ZONE.....	VIII
MAP 4: BIOPHYSICAL REGIONS	IX
MAP 5: LAND TYPE ASSOCIATIONS	X
MAP 6: PERCENT FORESTED	XI
MAP 7: FOREST COVER TYPES.....	XII
MAP 8: DISTRIBUTIONS OF VERMONT TREE SPECIES.....	XIII
MAP 9: PROJECTED HOUSING DENSITY CHANGE	XIV
MAP 10: FOREST LEGACY: ANALYSIS OF NEED - DRAFT– FEBRUARY, 2010.	XV
MAP 11: CONSERVED LANDS.....	XVI
MAP 12: PERCENT OF LAND AREA CONSERVED BY TOWN	XVII
MAP 13: PERCENT OF TOWN ACRES ENROLLED IN UVA	XVIII
MAP 14: UVA AVERAGE PARCEL SIZE BY TOWN.....	XIX
MAP 15: FOREST UVA PARCELS FOR WASHINGTON COUNTY.....	XX
MAP 16: FOREST PRODUCTIVITY	XXI
MAP 17: FOREST PRODUCTIVITY INPUT LAYER: GEOLOGY	XXII
MAP 18: FOREST PRODUCTIVITY INPUT LAYER: ELEVATION.....	XXIII
MAP 19: FOREST PRODUCTIVITY INPUT LAYER: HARDINESS ZONES.....	XXIV
MAP 20: FOREST PRODUCTIVITY INPUT LAYER: LANDFORMS	XXV
MAP 21: FOREST PRODUCTIVITY INPUT LAYER: SLOPE	XXVI
MAP 22: FOREST PRODUCTIVITY INPUT LAYER: PRECIPITATION	XXVII
MAP 23: AREAS OF FOREST DECLINE OVER 10 YEARS.....	XXVIII
MAP 24: FOREST SENSITIVITY TO ACID DEPOSITION.....	XXIX
MAP 25: ABOVE GROUND FOREST CARBON (LIVE TREE)	XXX
MAP 26: FOREST SOIL ORGANIC CARBON	XXXI
MAP 27: SUSCEPTIBILITY POTENTIAL FOR EMERALD ASH BORER.....	XXXII
MAP 28: SUSCEPTIBILITY POTENTIAL FOR ASIAN LONGHORNED BEETLE.....	XXXIII
MAP 29: SUSCEPTIBILITY POTENTIAL FOR HEMLOCK WOOLLY ADELGID	XXXIV
MAP 30: NON-NATIVE INVASIVE PLANT OCCURRENCE.....	XXXV
MAP 31: POTENTIAL CLIMATE CHANGE REFUGIA	XXXVI
MAP 32: VERMONT WILDFIRE RISK ASSESSMENT.....	XXXVII
MAP 33: COMMUNITY WILDFIRE PROTECTION PLANS IN THE NORTHEAST.....	XXXVIII
MAP 34: VERMONT MAJOR WATERSHEDS.....	XXXIX
MAP 35: WATER SOURCE PROTECTION AREAS	XL
MAP 36: LAND CLASSIFICATION OF VERMONT HEADWATERS	XLI

MAP 37: DEVELOPMENT PRESSURE ON PRIVATE FORESTS IN DRINKING WATER SUPPLY WATERSHEDS	XLII
MAP 38: POTENTIAL MULTI-STATE PRIORITY AREAS	XLIII
MAP 39: PRIORITY AREAS FOR URBAN TREE CANOPY ENHANCEMENTS.....	XLIV
MAP 40: URBAN AND COMMUNITY FORESTRY - COMMUNITY ACCOMPLISHMENT PRIORITIES.....	XLV
MAP 41: LOCAL SCALE PRIORITY LANDSCAPE	XLVI

2010 Vermont Forest Resource Plan

Department of Forests, Parks, and Recreation. Division of Forestry.

Urban Landscape Zone



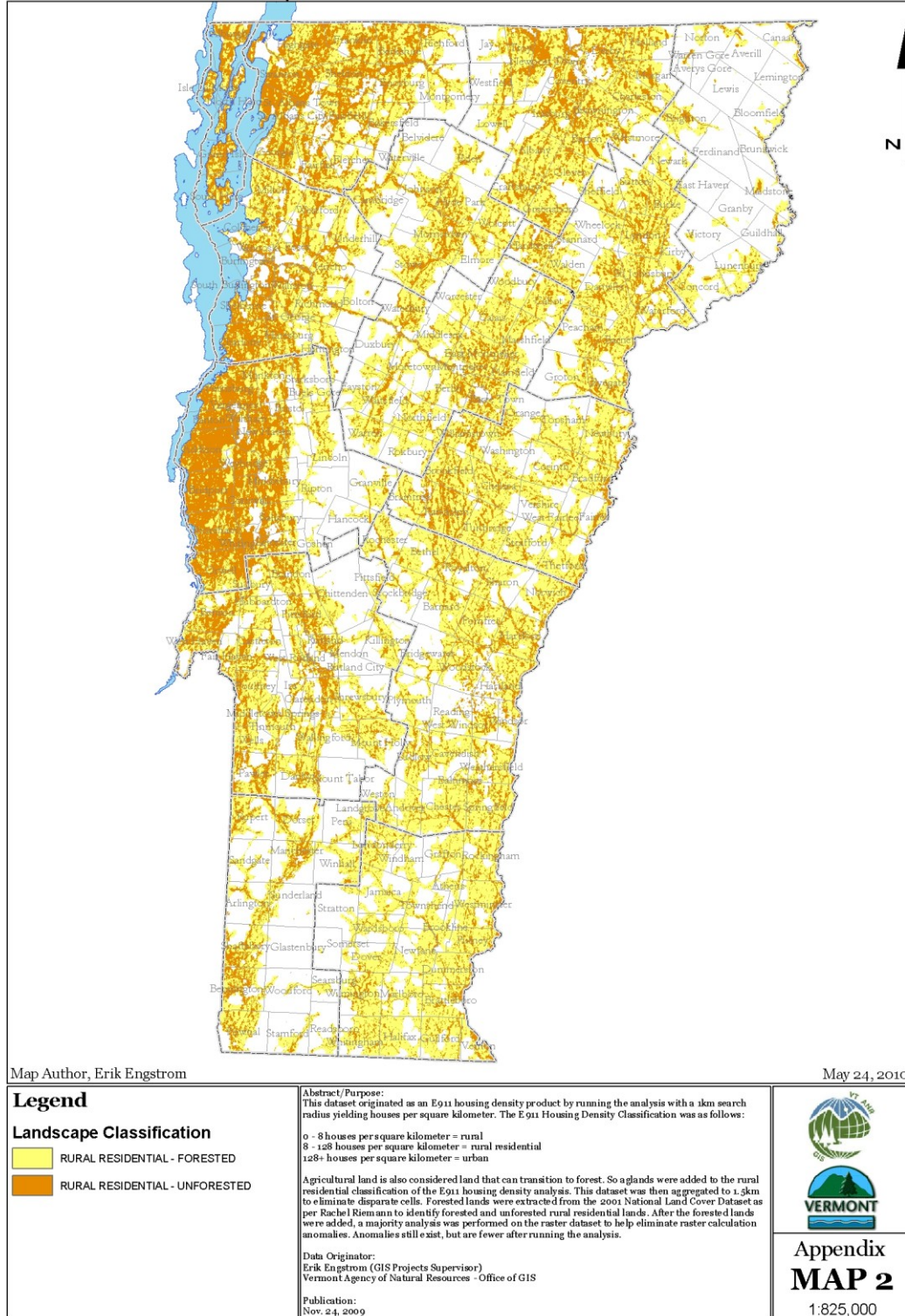
Map 1: Urban Landscape Zone

Links to text: [Urban Landscape Zone](#)

2010 Vermont Forest Resource Plan

Department of Forests, Parks, and Recreation. Division of Forestry.

Rural Residential Landscape Zone



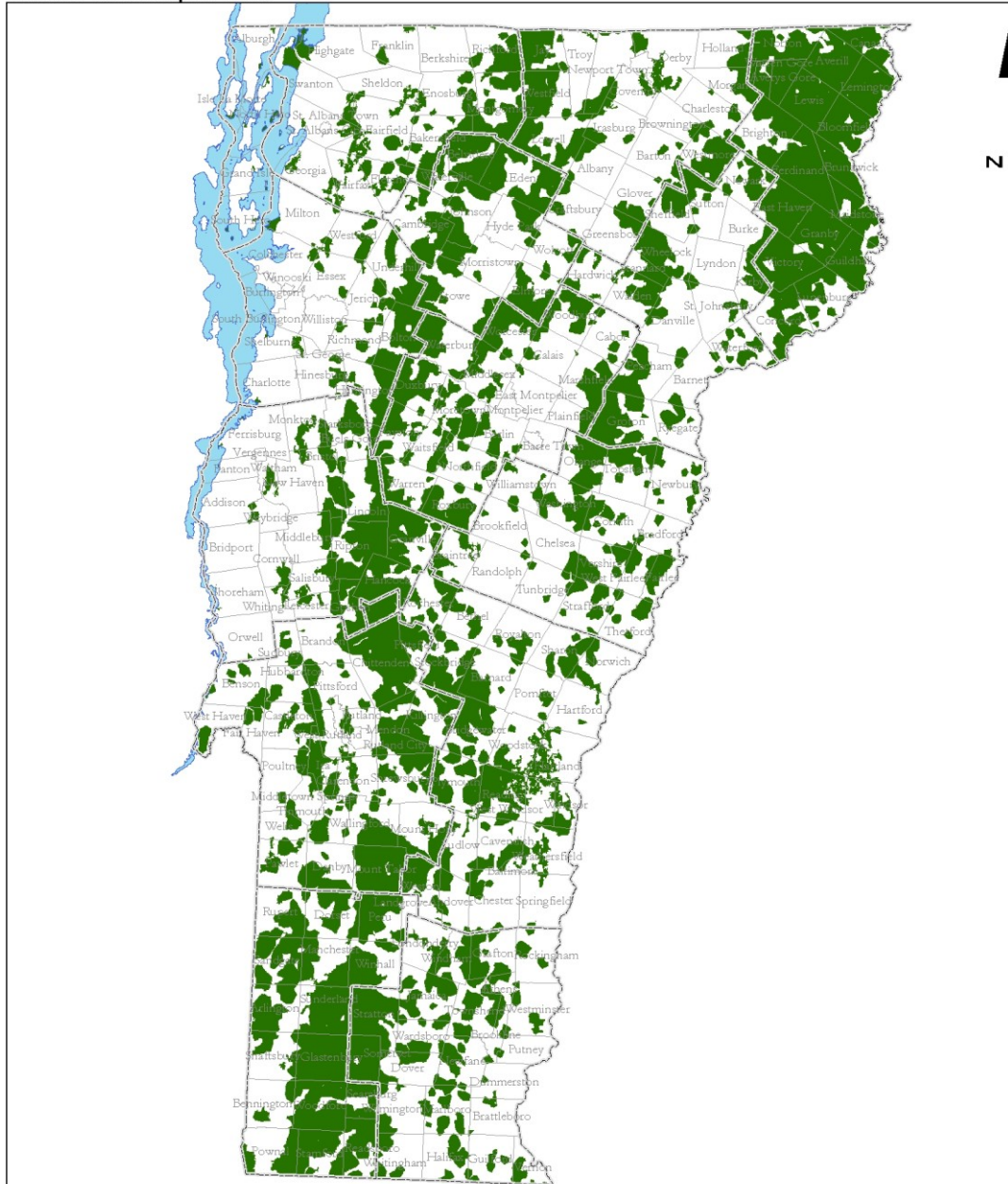
Map 2: Rural Residential Landscape Zone

Links to text: [Rural Residential Landscape Zone](#)

2010 Vermont Forest Resource Plan


Department of Forests, Parks, and Recreation. Division of Forestry.

Rural Landscape Zone



Map Author, Erik Engstrom

May 21, 2010

<p>Legend</p> <p>Landscape Classification</p> <p> RURAL</p>	<p>Abstract/Purpose: This dataset originated as an E911 housing density product by running the analysis with a 1km search radius yielding houses per square kilometer. The E911 Housing Density Classification was as follows:</p> <p>0 - 8 houses per square kilometer = rural 9 - 128 houses per square kilometer = rural residential 128+ houses per square kilometer = urban</p> <p>Agricultural land is also considered land that can transition to forest. So aglands were added to the rural residential classification of the E911 housing density analysis. This dataset was then aggregated to 1.3km to eliminate disparate cells. Forested lands were extracted from the 2001 National Land Cover Dataset as per Rachel Riemann to identify forested and unforested rural residential lands. After the forested lands were added, a majority analysis was performed on the raster dataset to help eliminate raster calculation anomalies. Anomalies still exist, but are fewer after running the analysis.</p> <p>Data Originator: Erik Engstrom (GIS Projects Supervisor) Vermont Agency of Natural Resources - Office of GIS</p> <p>Publication: Nov. 24, 2009</p>	<p></p> <p>Appendix MAP 3 1:825,000</p>
--	--	--

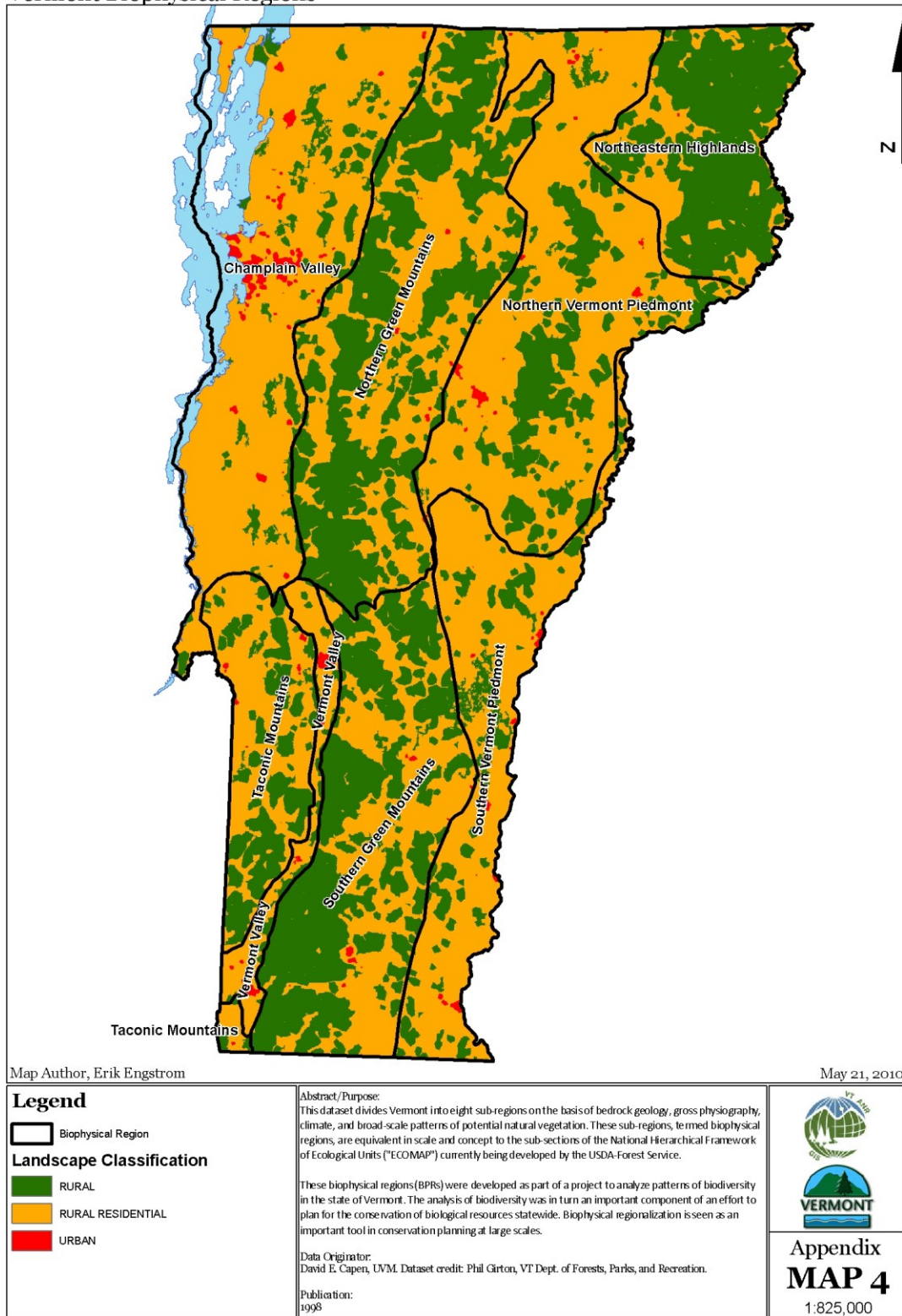
Map 3: Rural Landscape Zone

Links to text: [Rural Landscape Zone](#)

2010 Vermont Forest Resource Plan

Department of Forests, Parks, and Recreation. Division of Forestry.

Vermont Biophysical Regions



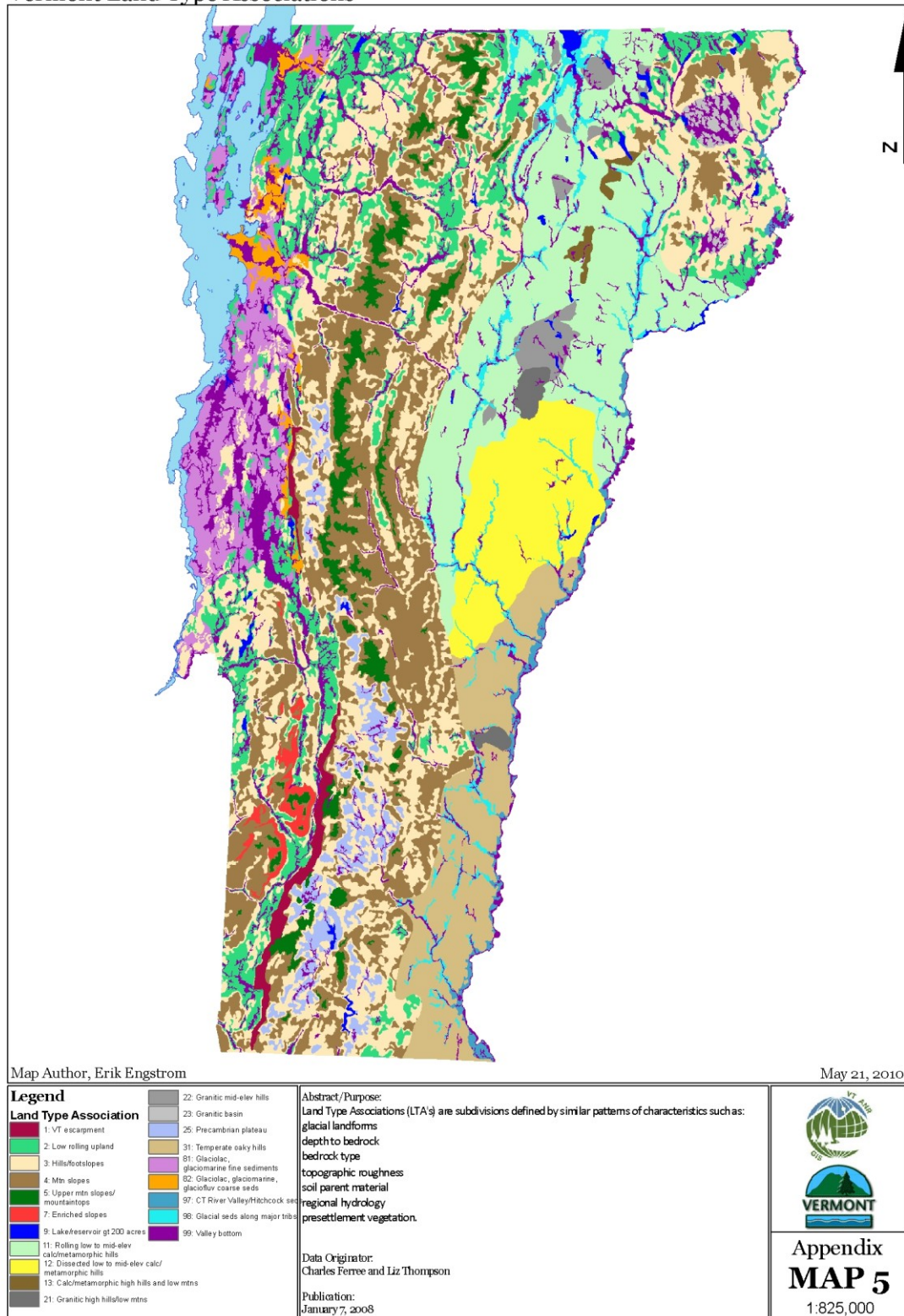
Map 4: Biophysical Regions

Links to text: [Ecological Mapping](#)

2010 Vermont Forest Resource Plan

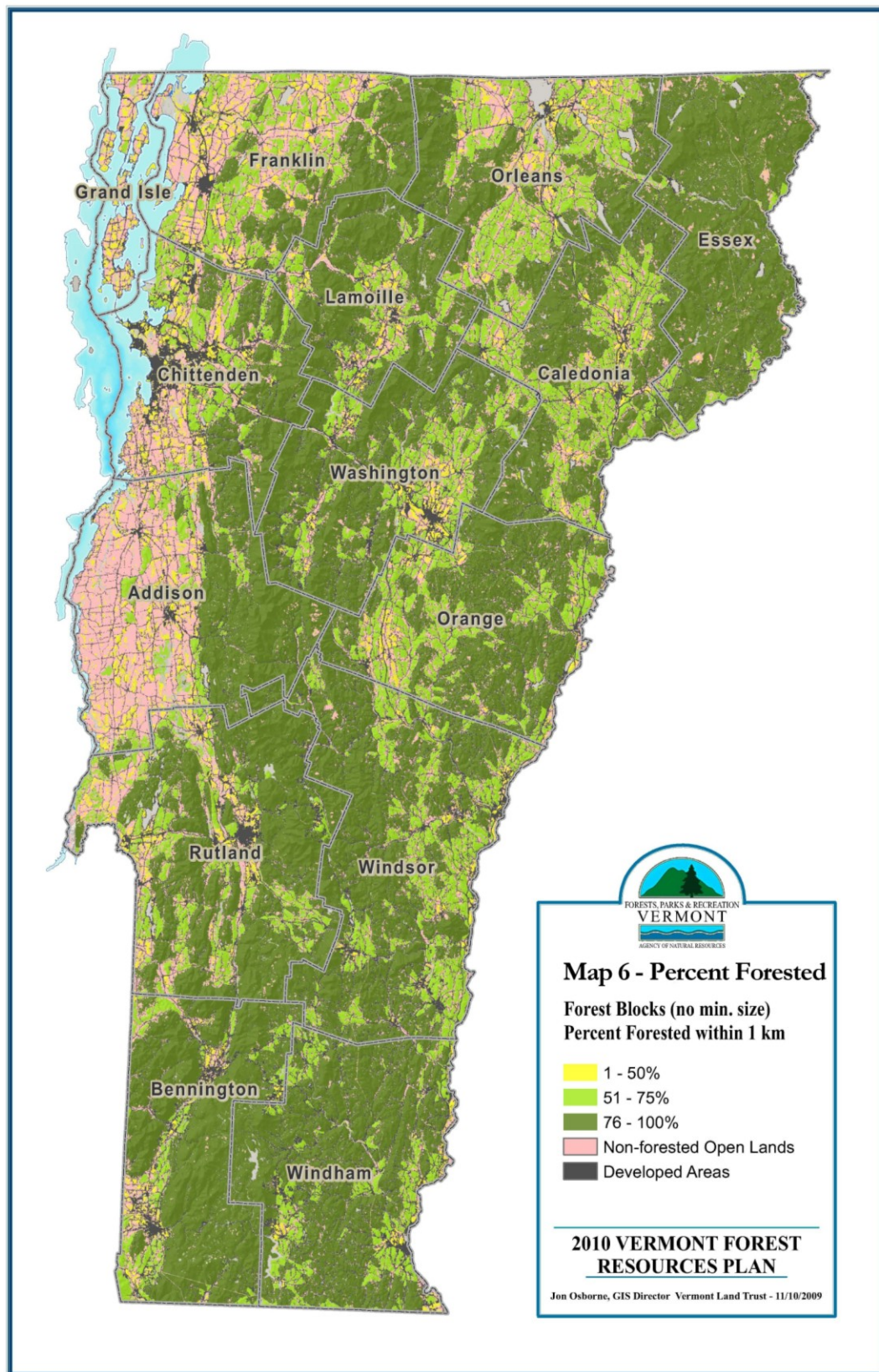
Department of Forests, Parks, and Recreation. Division of Forestry.

Vermont Land Type Associations



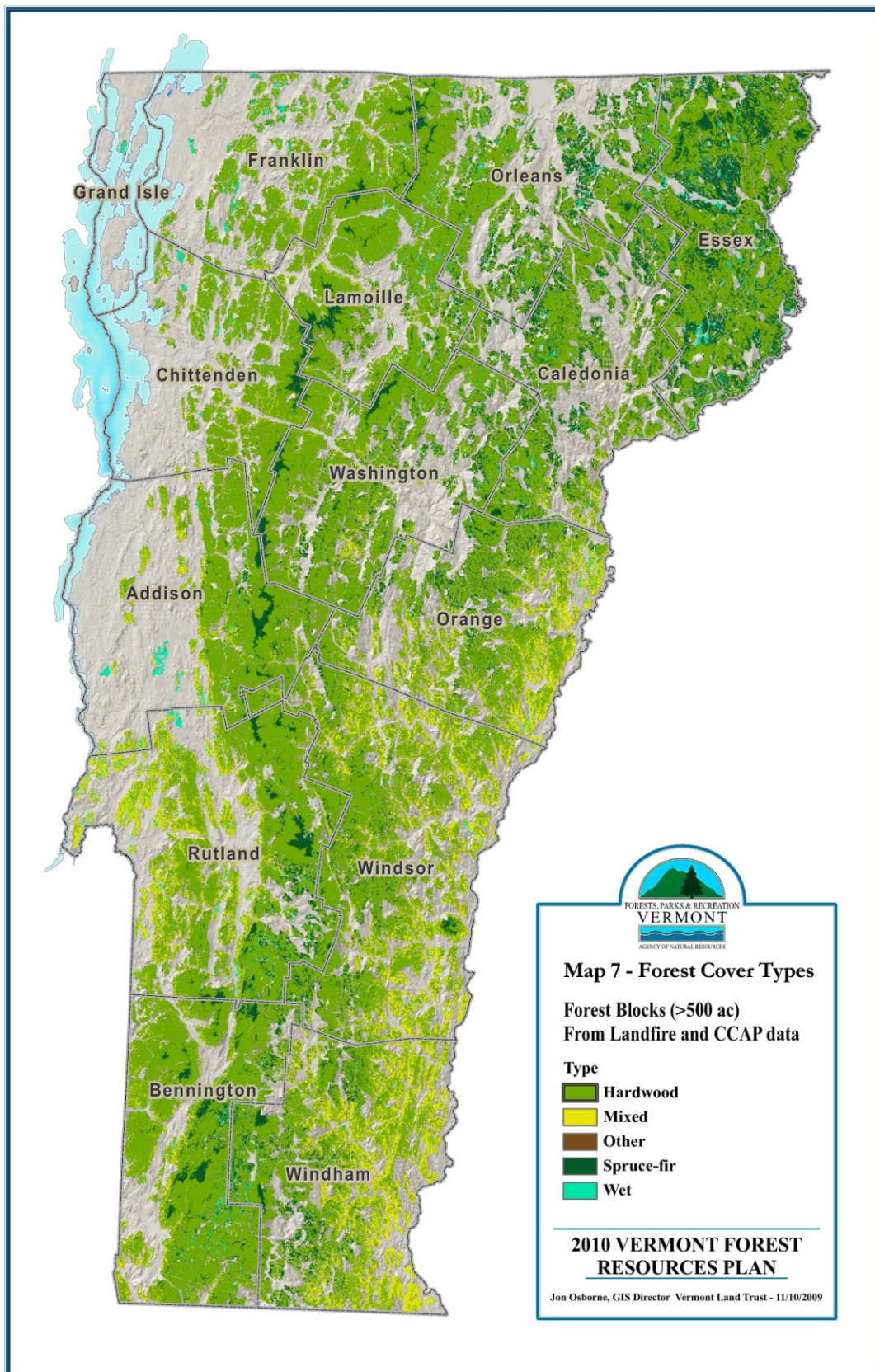
Map 5: Land Type Associations

Links to text: [Rural Residential Landscape Zone](#), [Rural Landscape Zone](#), [Ecological Mapping](#)



Map 6: Percent Forested

Links to text: [Forested Land Area](#)



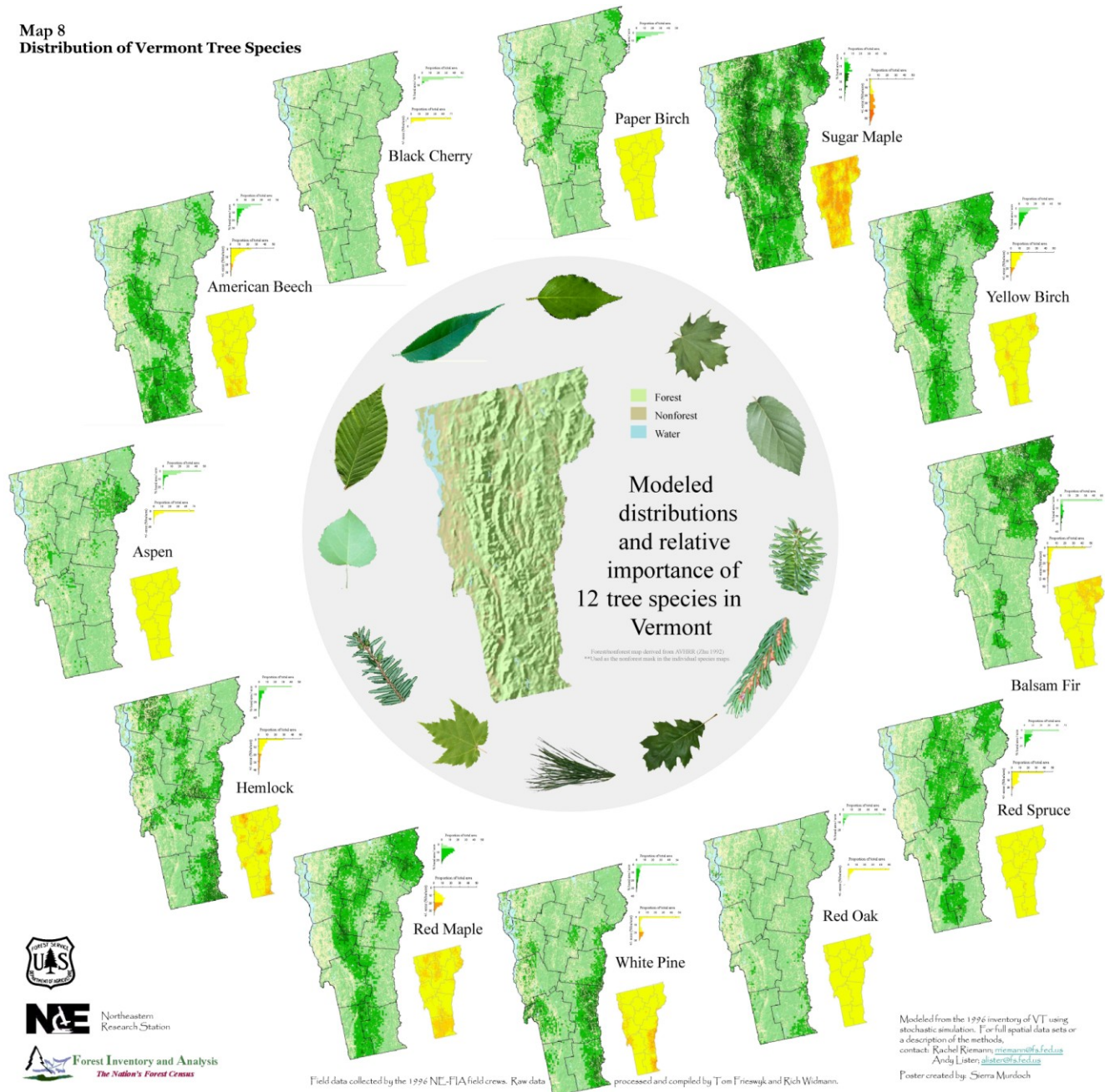
Map 7: Forest Cover Types

Links to text: [Forested Land Area](#)

2010 Vermont Forest Resource Plan

Department of Forests, Parks, and Recreation. Division of Forestry.

Map 8
Distribution of Vermont Tree Species



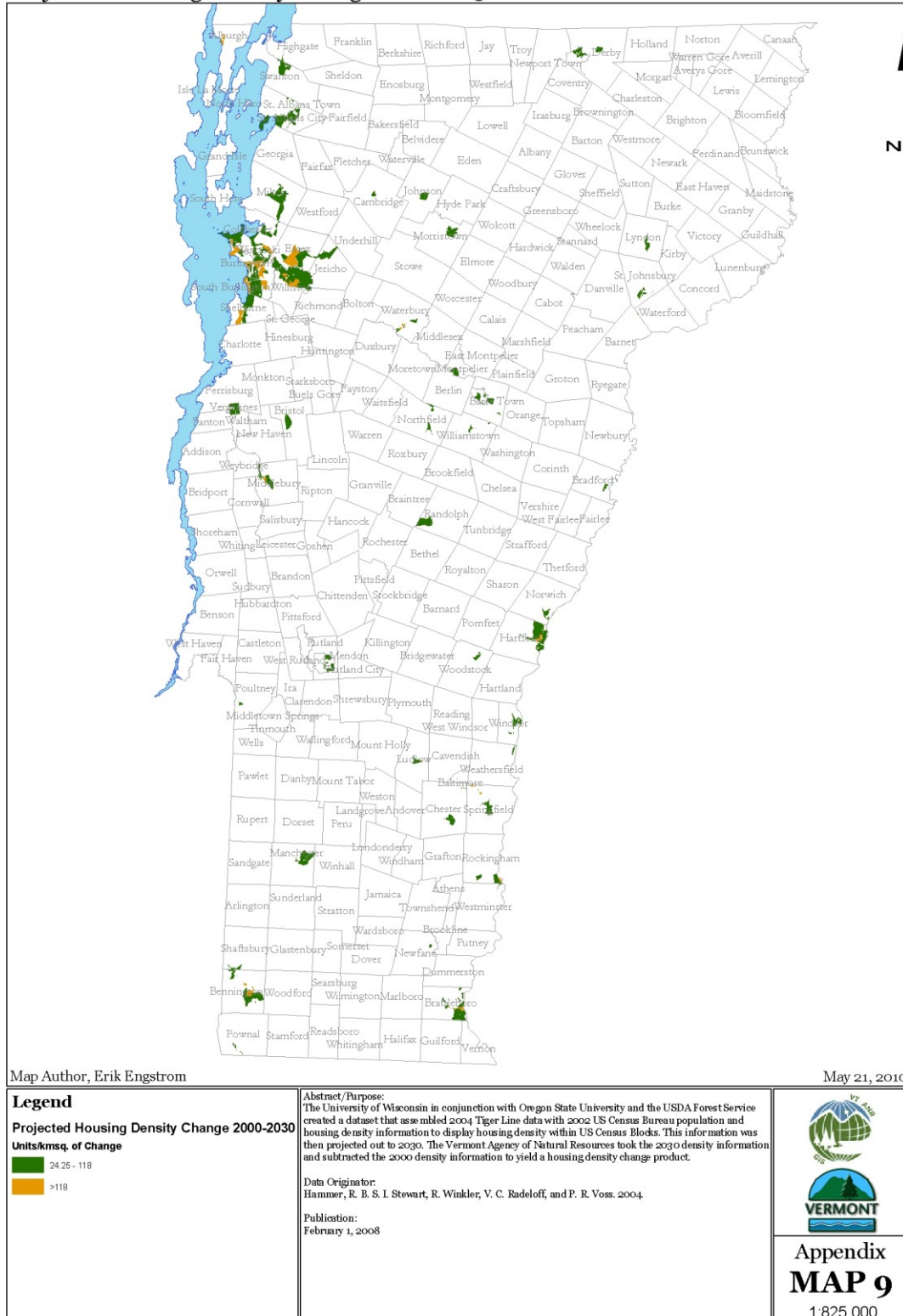
Map 8: Distributions of Vermont Tree Species

Links to text: [Species Composition and Distribution](#)

2010 Vermont Forest Resource Plan

Department of Forests, Parks, and Recreation. Division of Forestry.

Projected Housing Density Change 2000-2030



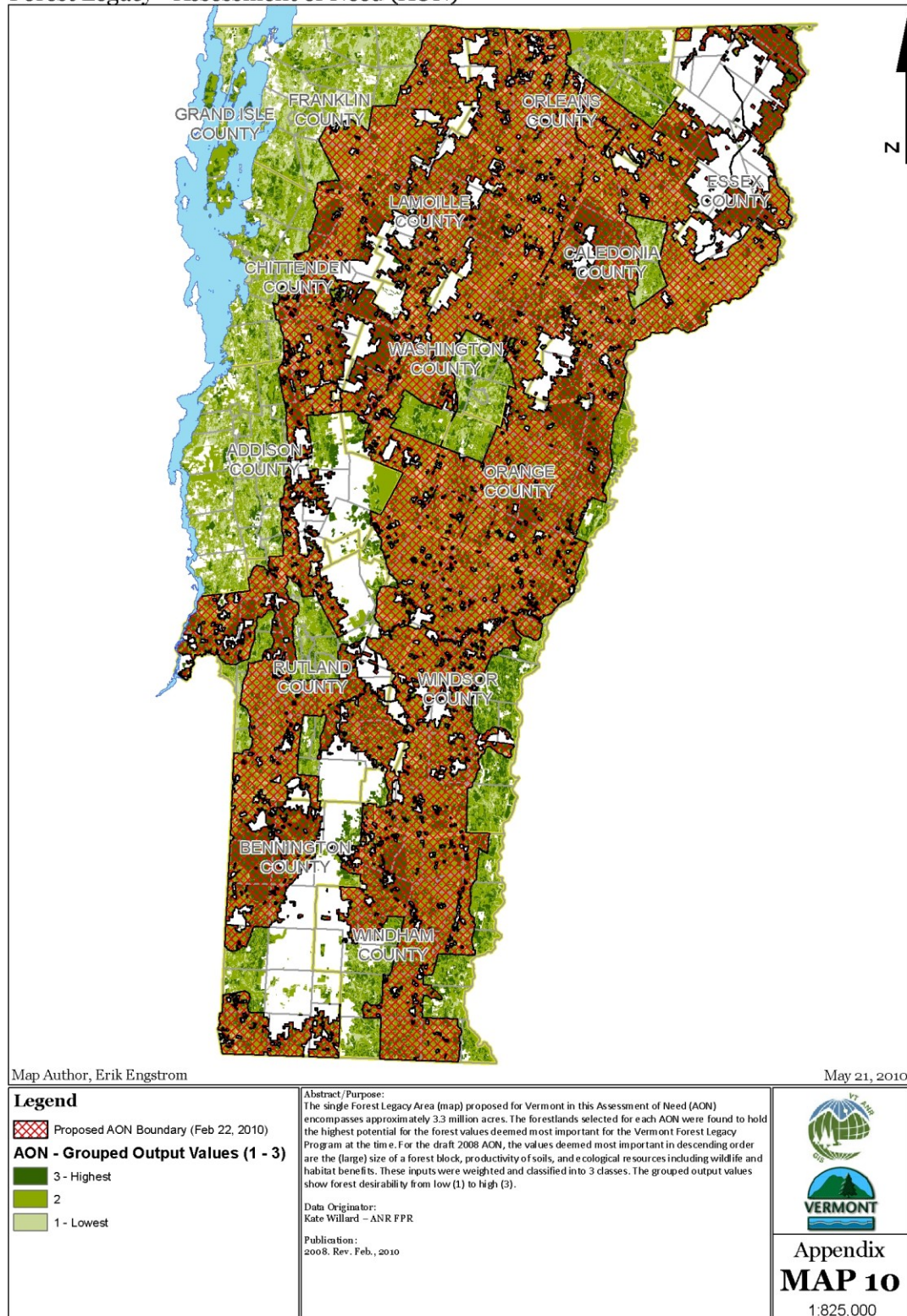
Map 9: Projected Housing Density Change

Links to text: [Rural Residential Landscape Zone](#), [Population Growth](#), [Parcelization](#), [Fragmentation and Development](#)

2010 Vermont Forest Resource Plan

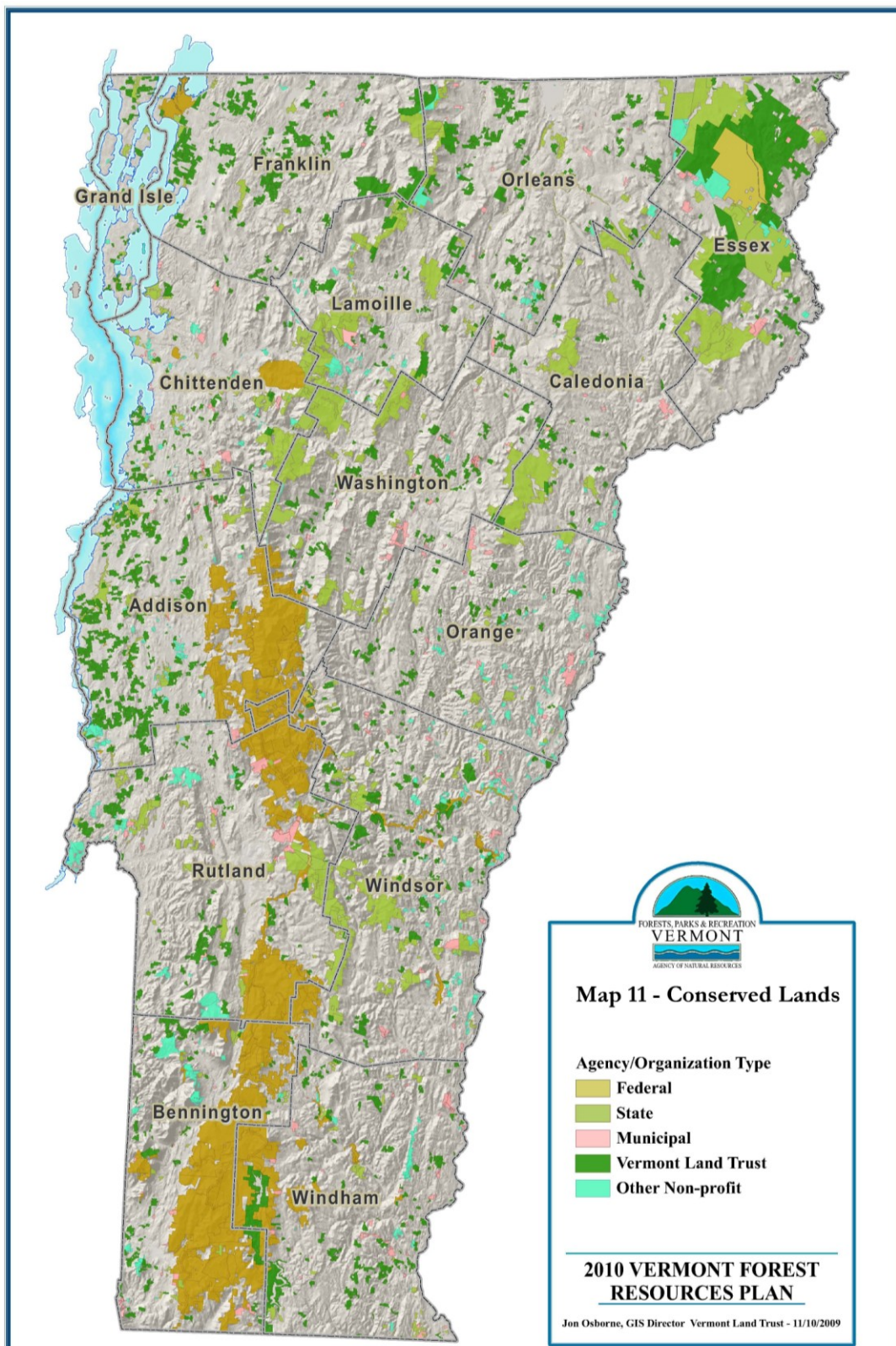
Department of Forests, Parks, and Recreation. Division of Forestry.

Forest Legacy - Assessment of Need (AON)



Map 10: Forest Legacy: Analysis of Need - DRAFT- February, 2010.

Link to text: [Priority Areas and Issues, Forest Legacy and Land Conservation](#)



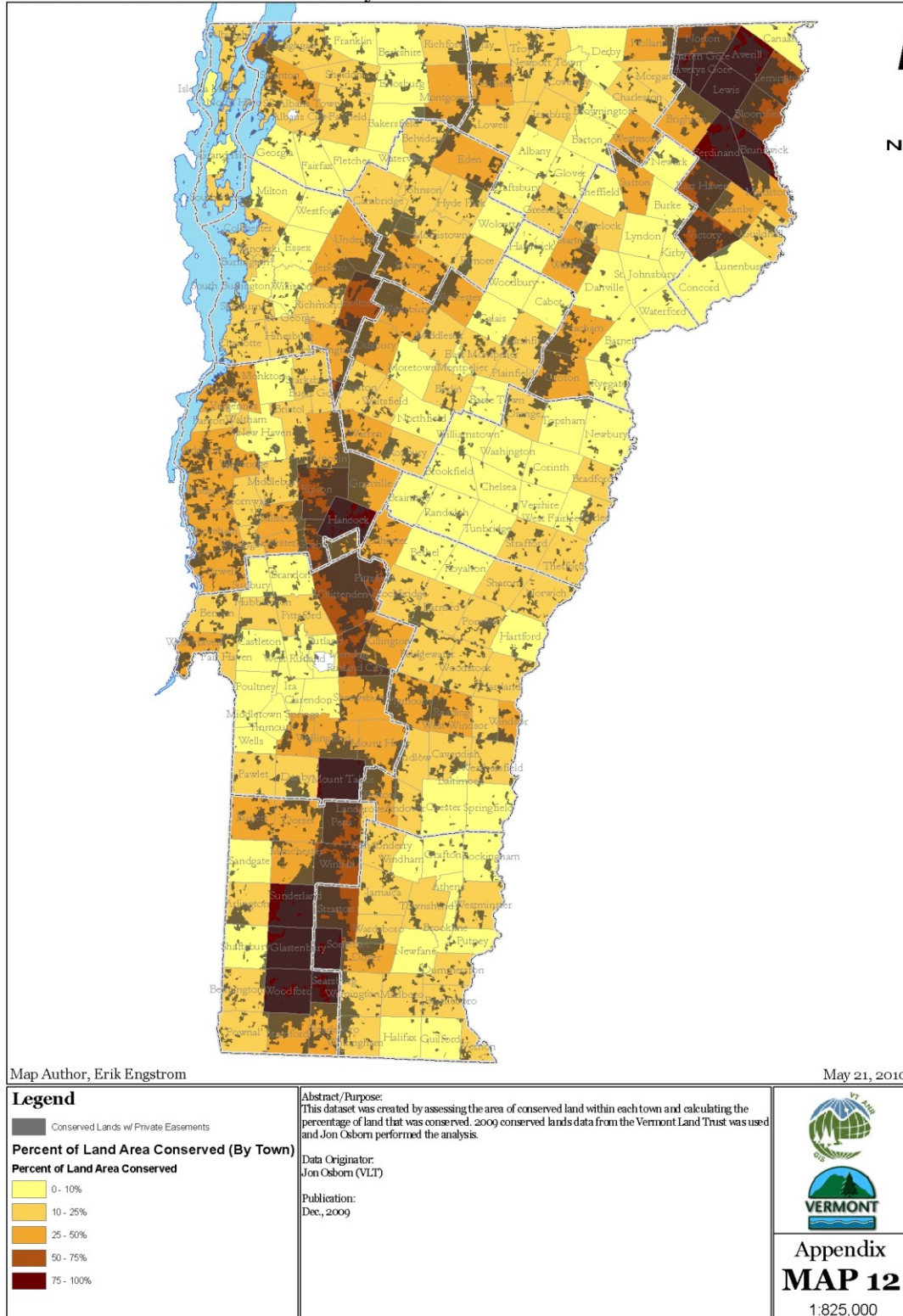
Map 11: Conserved Lands

Links to text: [Forest Legacy and Land Conservation](#), [Ownership of Forest Land](#)

2010 Vermont Forest Resource Plan

Department of Forests, Parks, and Recreation. Division of Forestry.

Percent of Land Area Conserved by Town



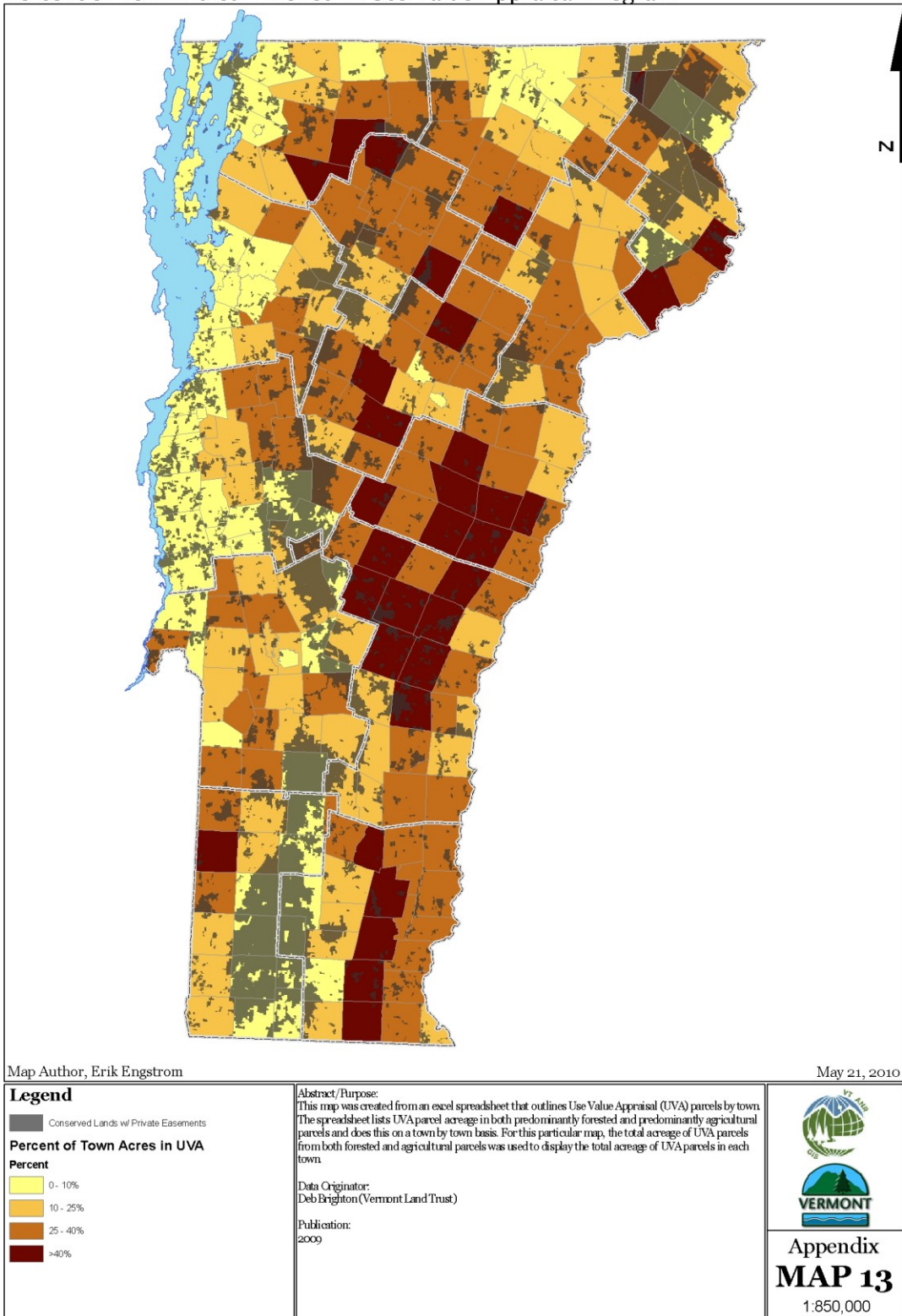
Map 12: Percent of Land Area Conserved by Town

Links to text: [Forest Legacy and Land Conservation](#)

2010 Vermont Forest Resource Plan

Department of Forests, Parks, and Recreation. Division of Forestry.

Percent of Town Acres Enrolled in Use Value Appraisal Program



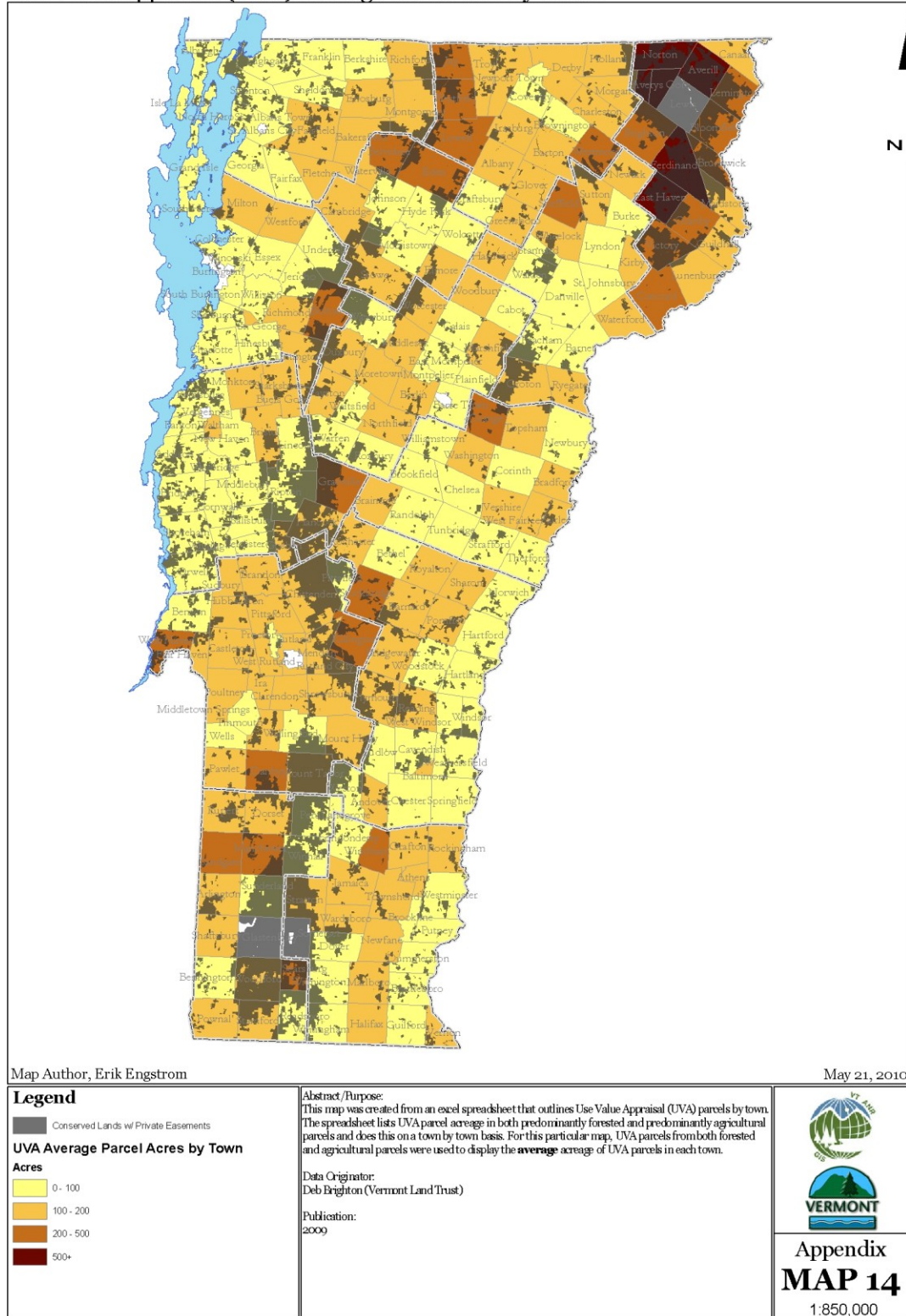
Map 13: Percent of Town Acres Enrolled in UVA

Links to text: [Rural Residential Landscape Zone](#), [Rural Landscape Zone](#), [Use Value Appraisal](#)

2010 Vermont Forest Resource Plan

Department of Forests, Parks, and Recreation. Division of Forestry.

Use Value Appraisal (UVA) Average Parcel Size by Town



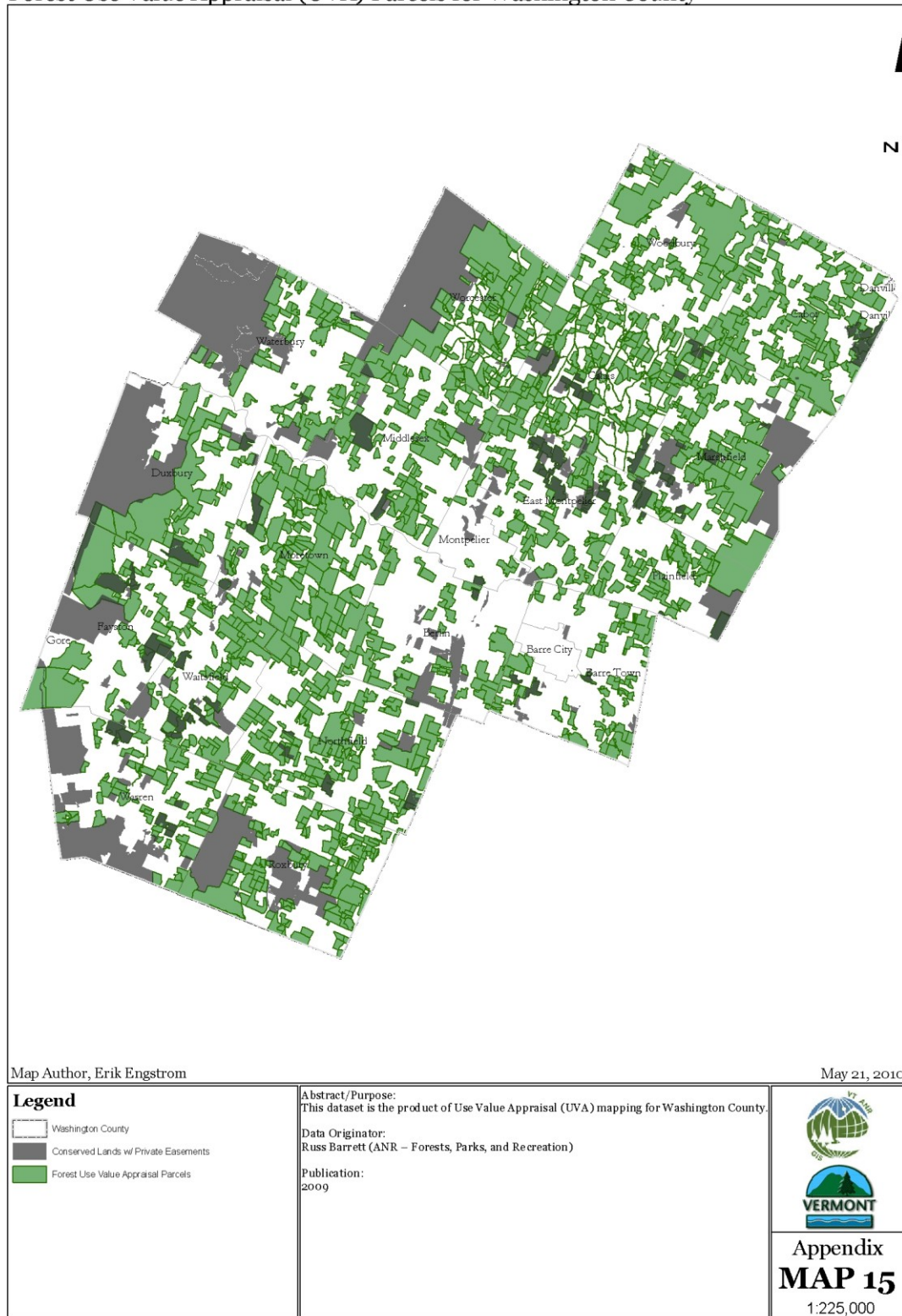
Map 14: UVA Average Parcel Size by Town

Links to text: [Rural Residential Landscape Zone](#), [Rural Landscape Zone](#), [Use Value Appraisal](#)

2010 Vermont Forest Resource Plan

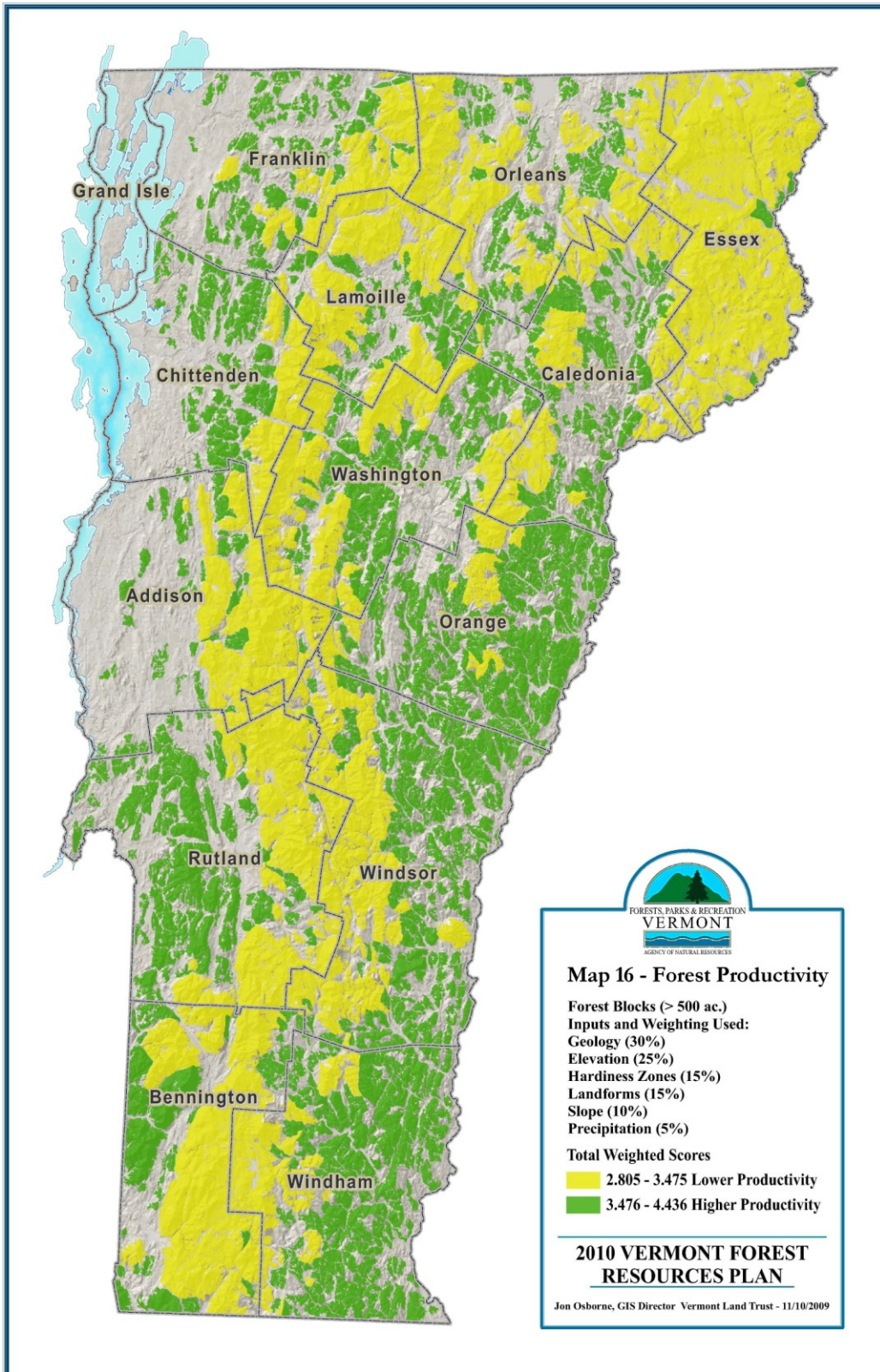
Department of Forests, Parks, and Recreation. Division of Forestry.

Forest Use Value Appraisal (UVA) Parcels for Washington County



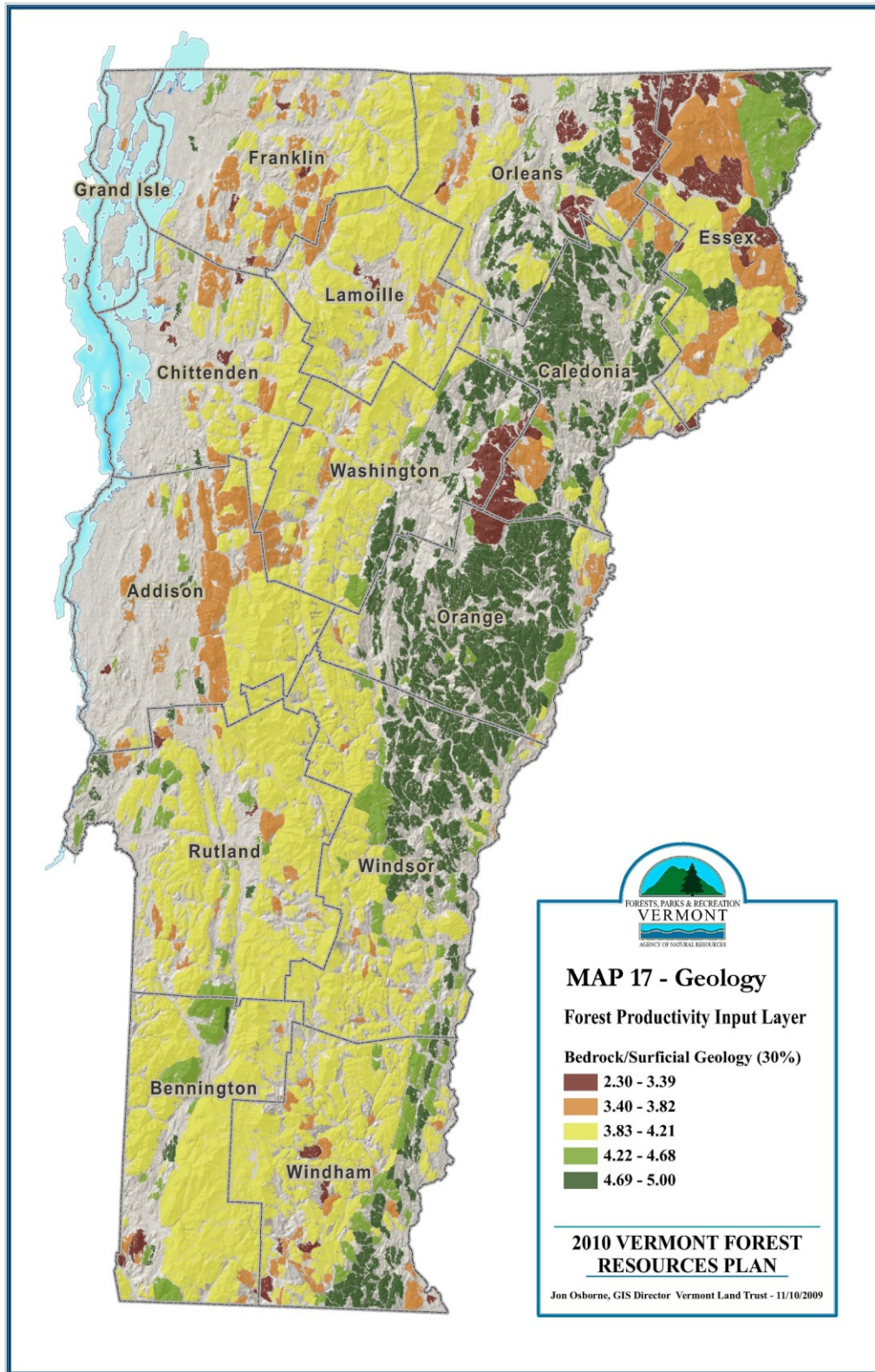
Map 15: Forest UVA Parcels for Washington County

Links to text: [Use Value Appraisal](#)

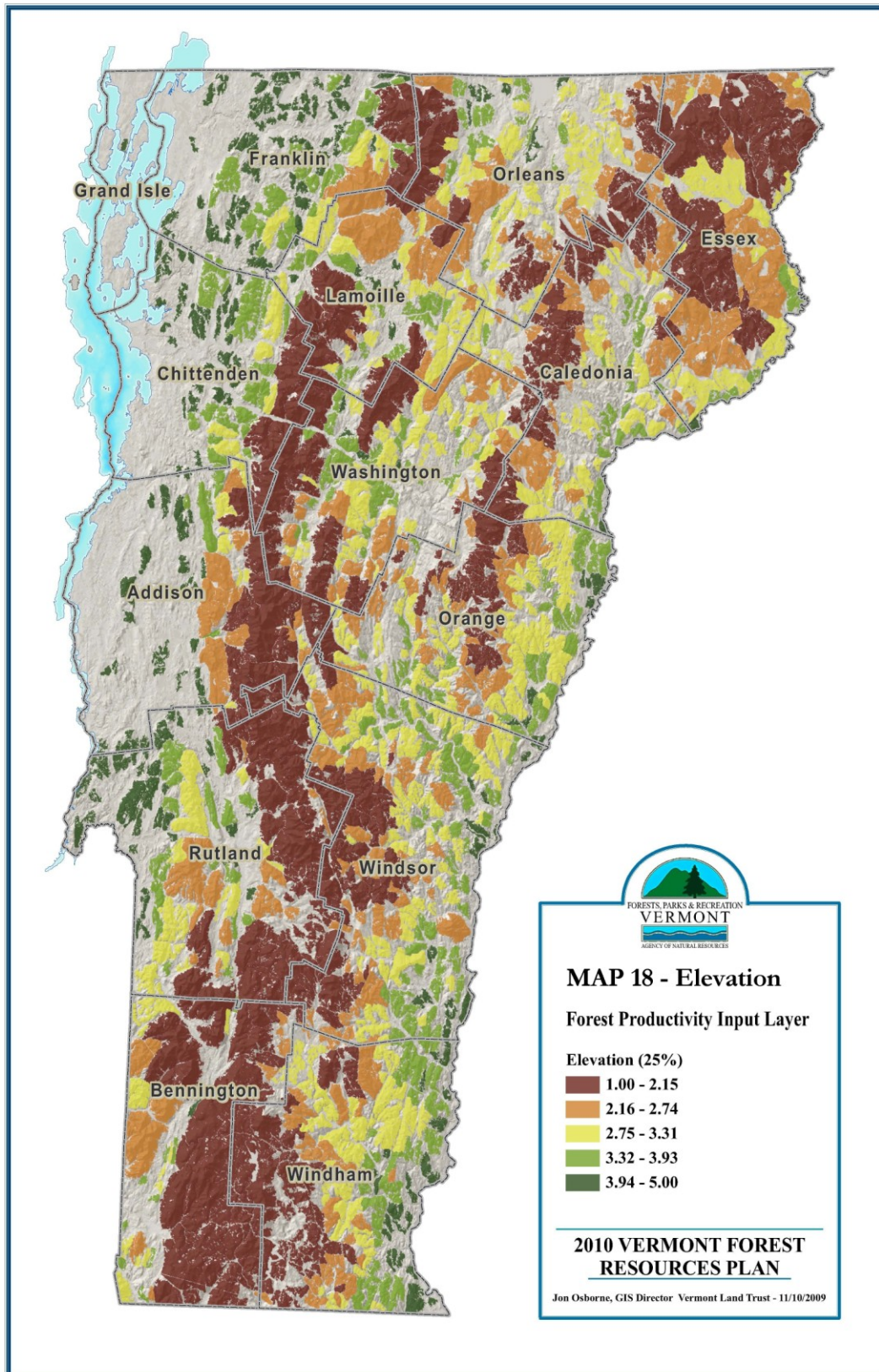


Map 16: Forest Productivity

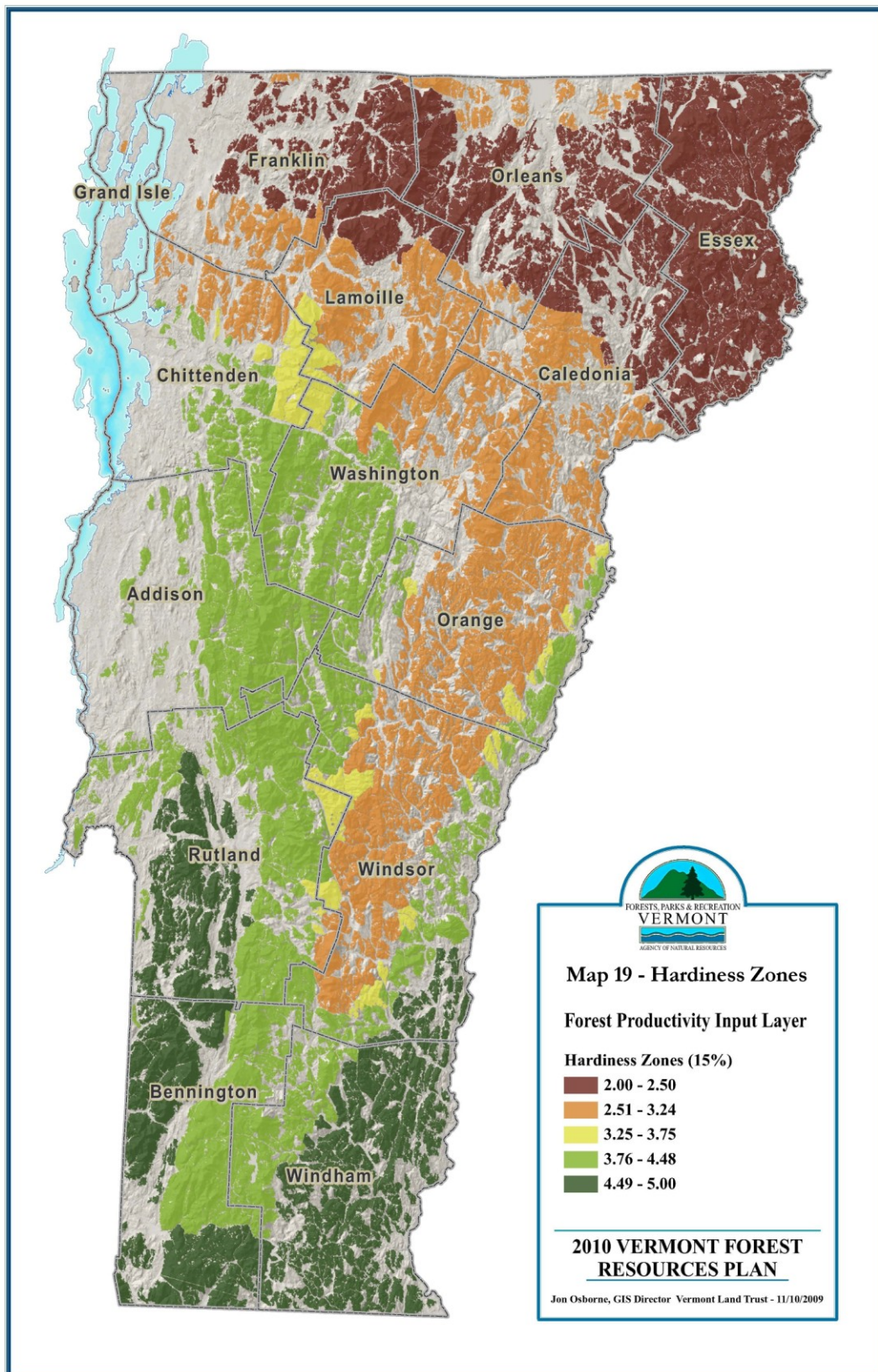
Links to text: [Rural Residential Landscape Zone](#), [Rural Landscape Zone](#), [Forest Productivity](#)



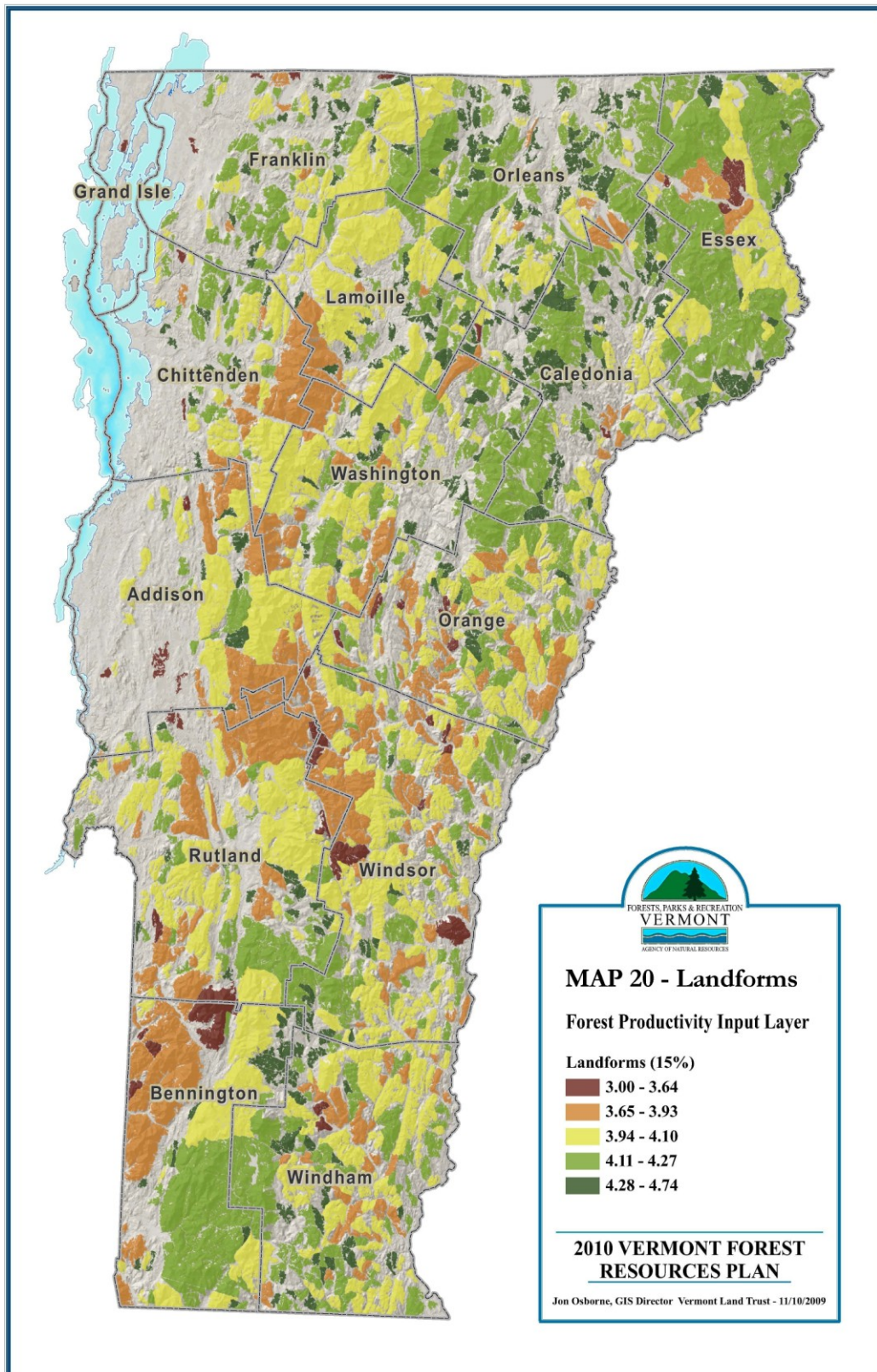
Map 17: Forest Productivity Input Layer: Geology



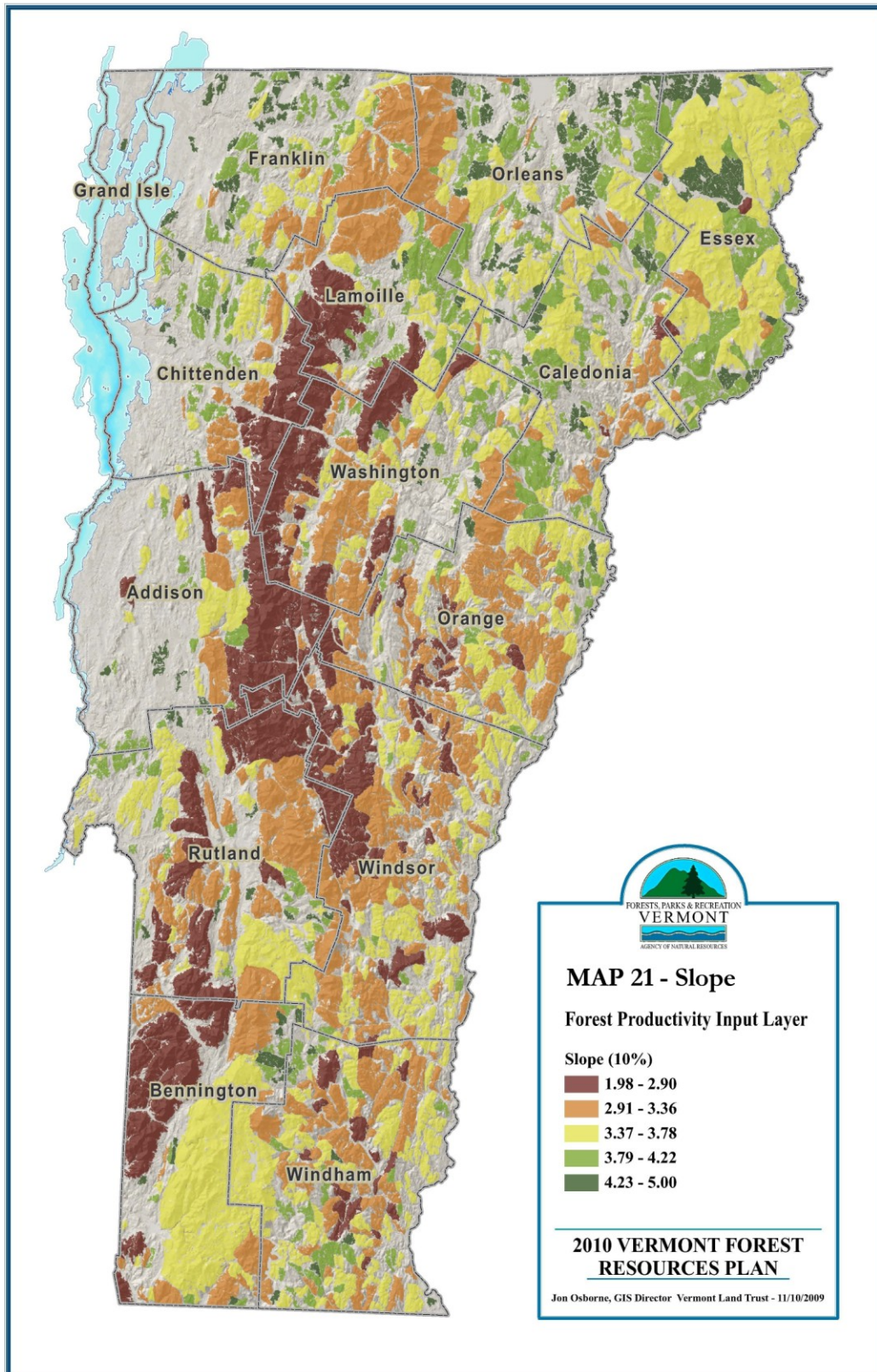
Map 18: Forest Productivity Input Layer: Elevation



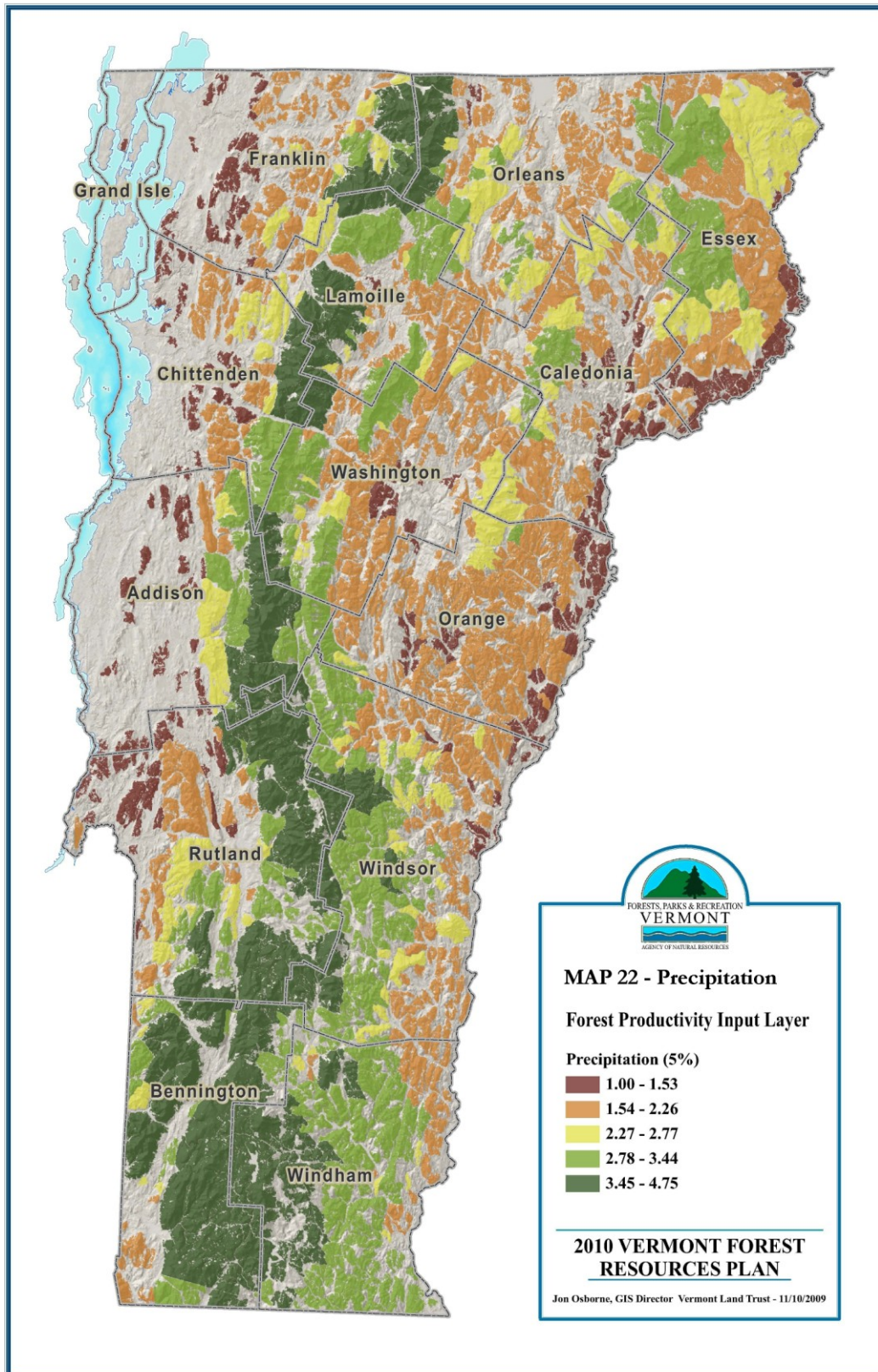
Map 19: Forest Productivity Input Layer: Hardiness Zones



Map 20: Forest Productivity Input Layer: Landforms



Map 21: Forest Productivity Input Layer: Slope

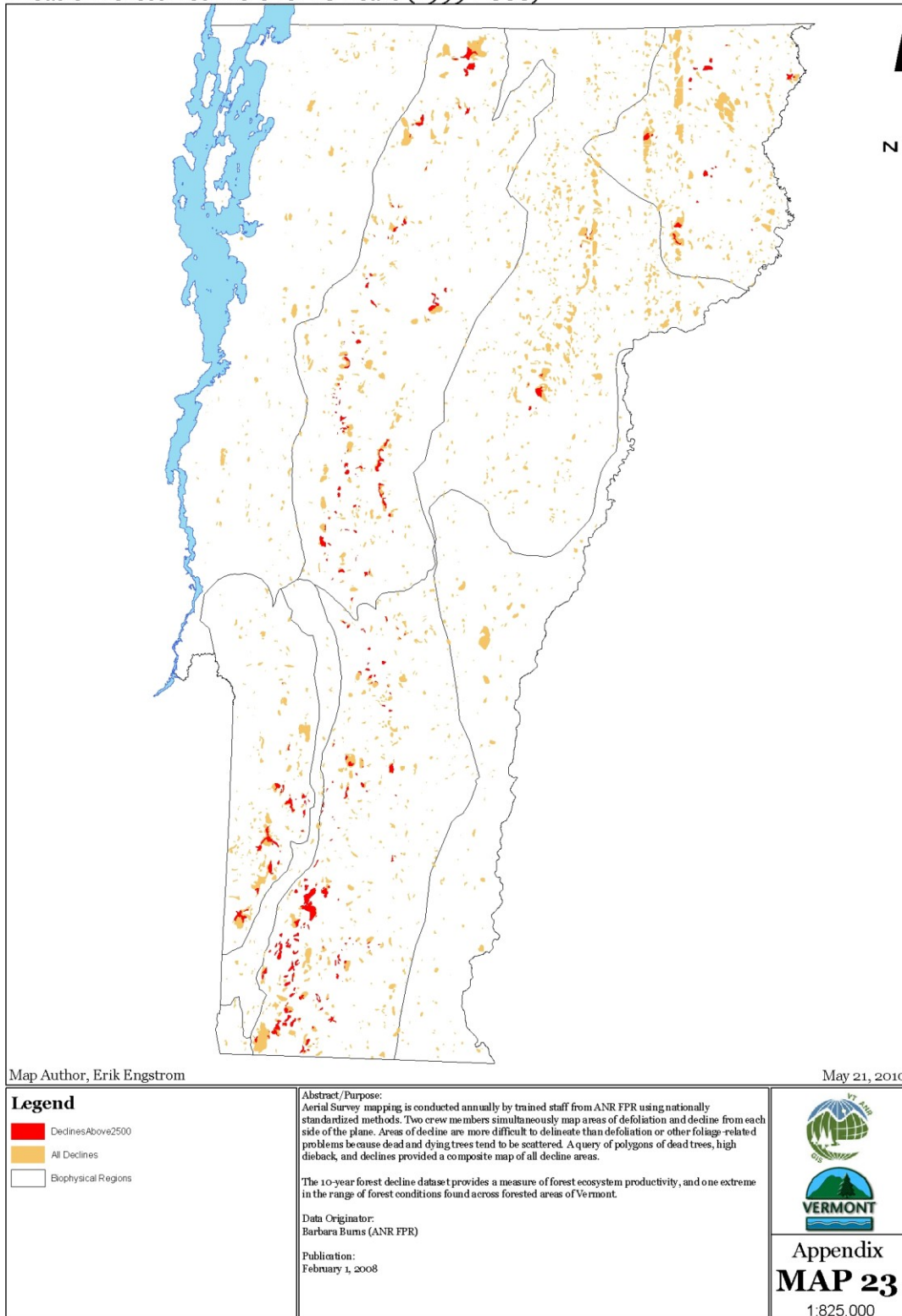


Map 22: Forest Productivity Input Layer: Precipitation

2010 Vermont Forest Resource Plan

Department of Forests, Parks, and Recreation. Division of Forestry.

Areas of Forest Decline Over 10 Years (1999-2008)



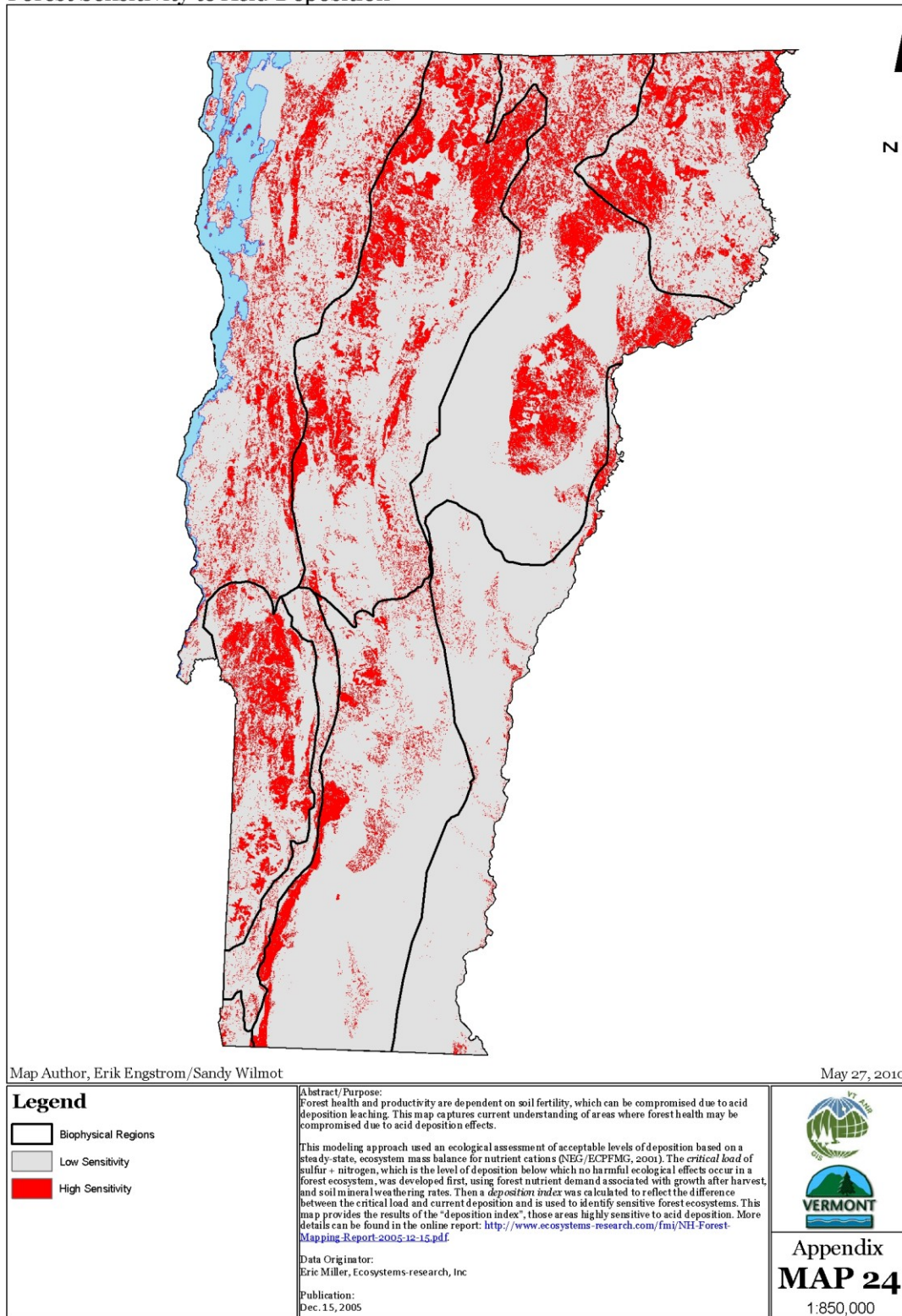
Map 23: Areas of Forest Decline Over 10 Years

Links to text: [Forest Productivity](#), [Natural Disturbances](#)

2010 Vermont Forest Resource Plan

Department of Forests, Parks, and Recreation. Division of Forestry.

Forest Sensitivity to Acid Deposition



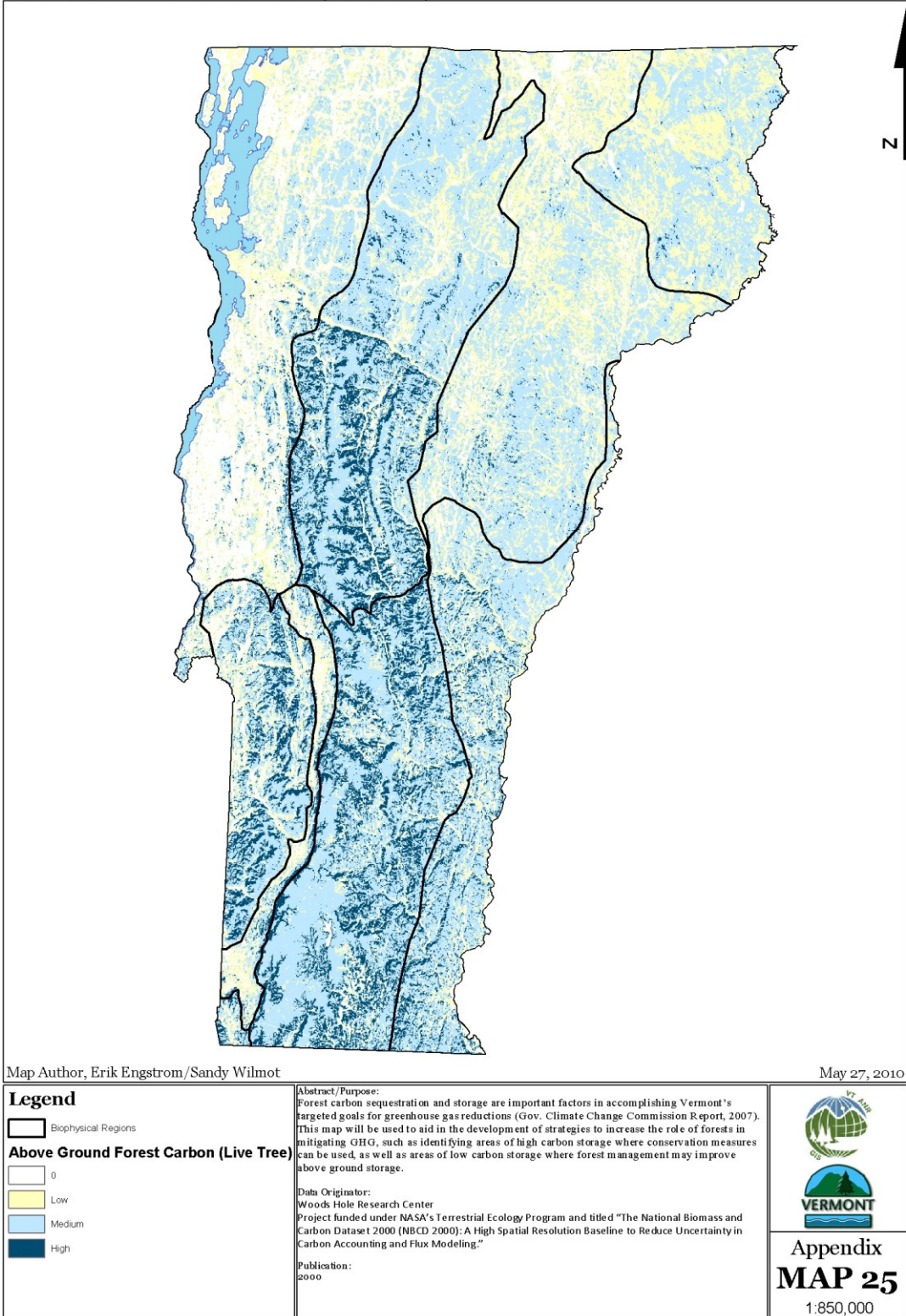
Map 24: Forest Sensitivity to Acid Deposition

Links to text: [Priority Areas and Issues](#), [Forest Productivity](#), [Acid Deposition](#)

2010 Vermont Forest Resource Plan

Department of Forests, Parks, and Recreation. Division of Forestry.

Above Ground Forest Carbon (Live Tree)



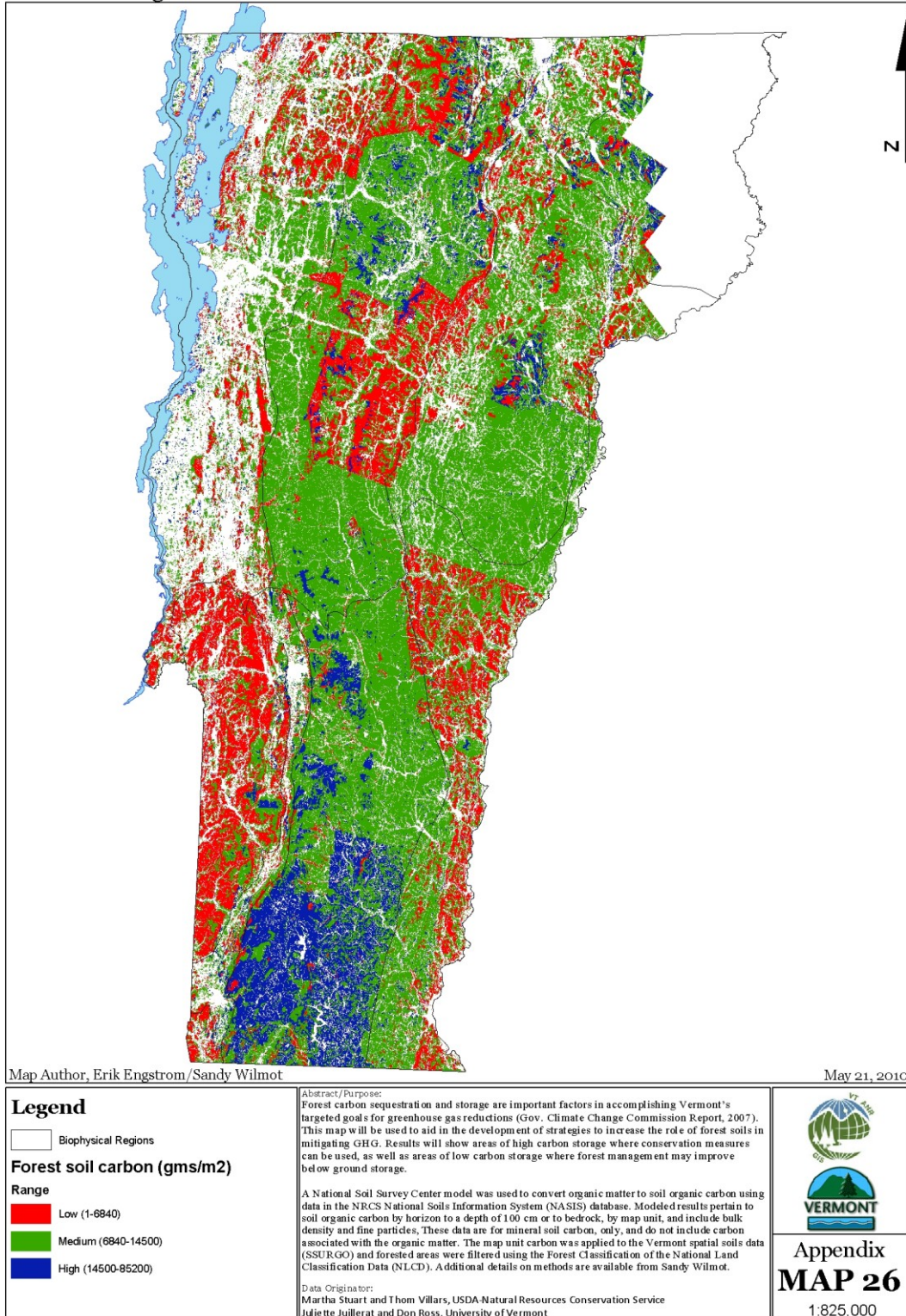
Map 25: Above Ground Forest Carbon (Live Tree)

Links to text: [Forest Productivity](#), [Climate Change](#), [Carbon Sequestration and Storage](#)

2010 Vermont Forest Resource Plan

Department of Forests, Parks, and Recreation. Division of Forestry.

Forest Soil Organic Carbon



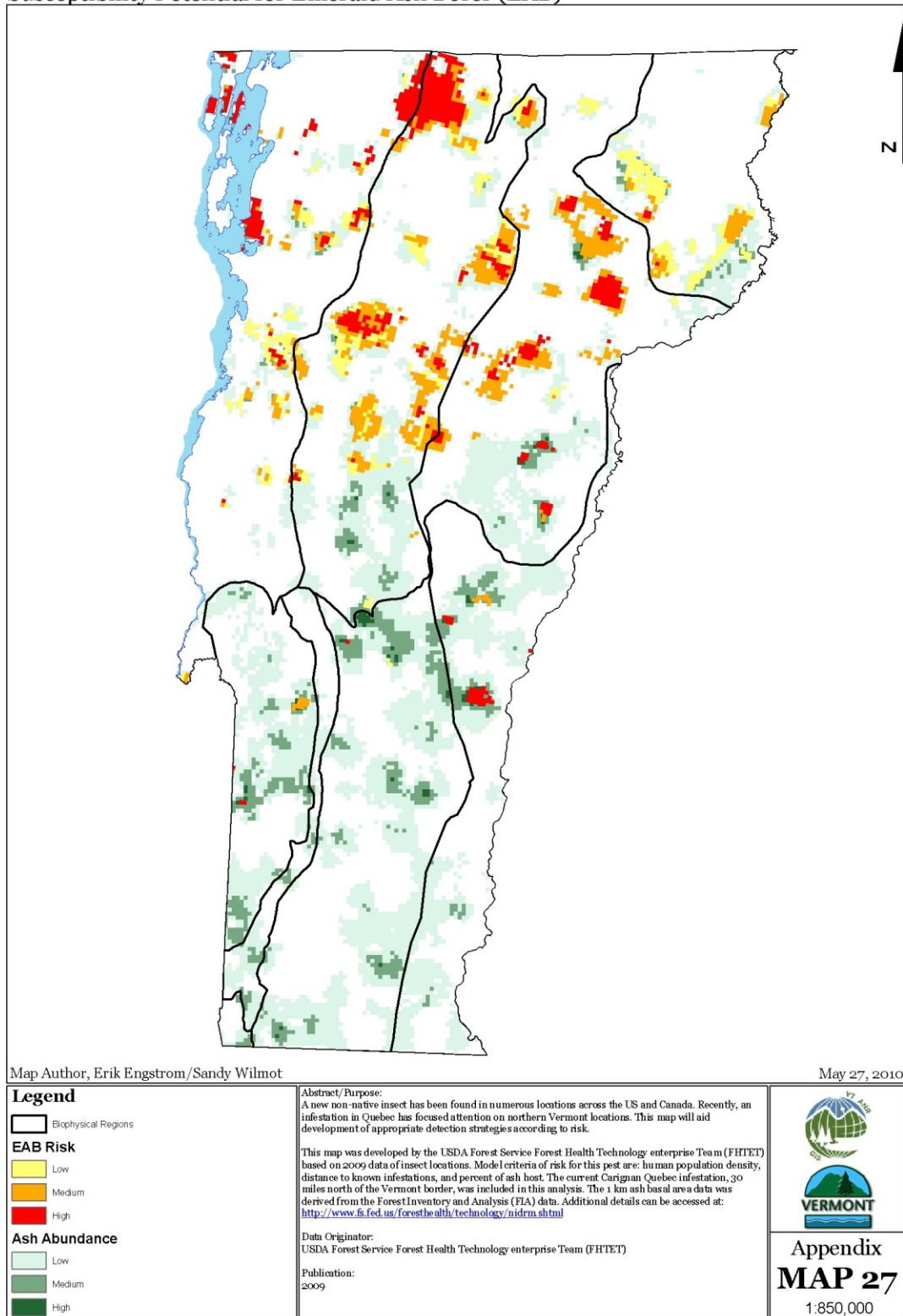
Map 26: Forest Soil Organic Carbon

Links to text: [Forest Productivity](#), [Climate Change](#), [Carbon Sequestration and Storage](#)

2010 Vermont Forest Resource Plan

Department of Forests, Parks, and Recreation. Division of Forestry.

Susceptibility Potential for Emerald Ash Borer (EAB)



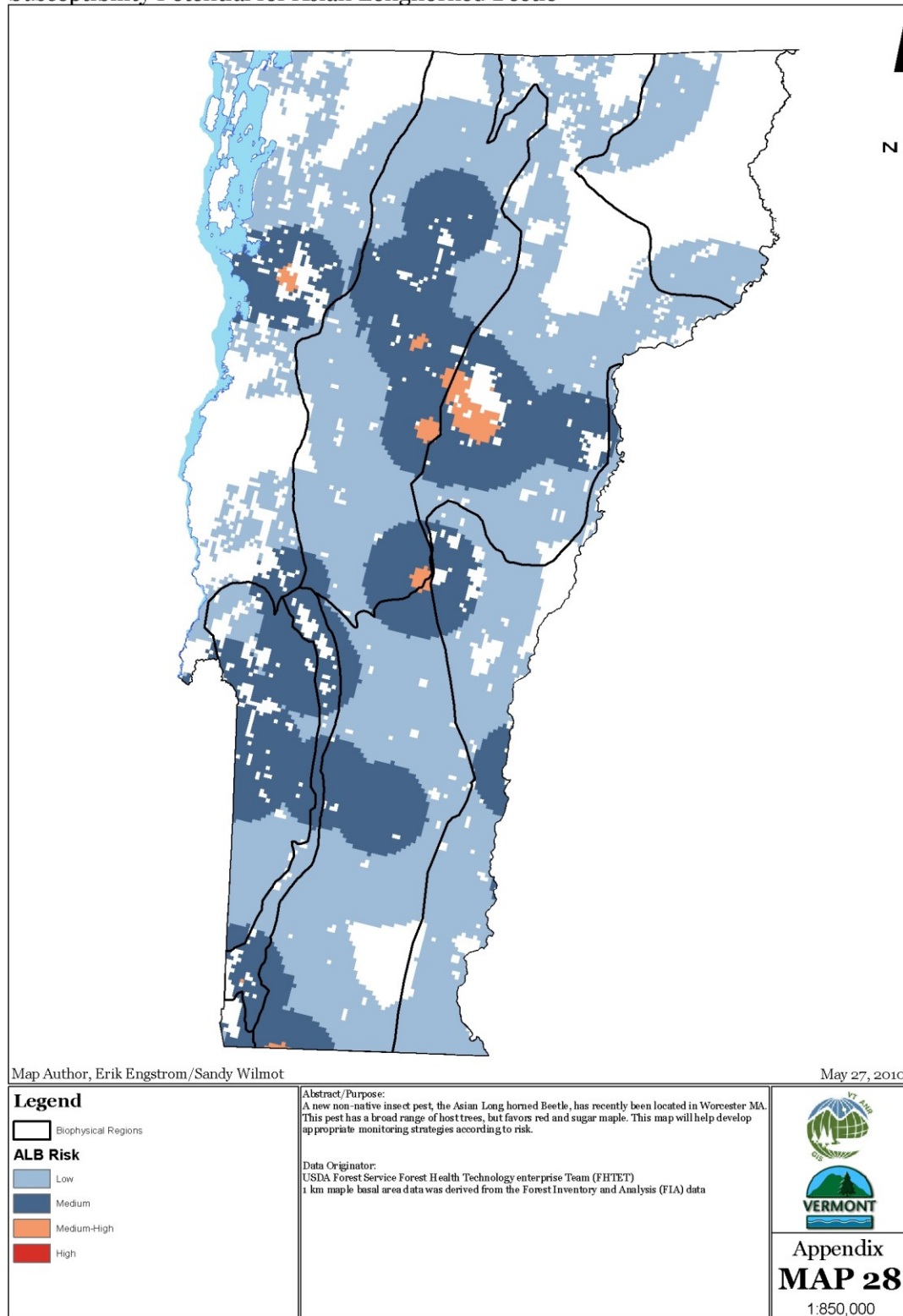
Map 27: Susceptibility Potential for Emerald Ash Borer

Links to text: [Priority Areas and Issues](#), [Non-Native Invasive Species](#)

2010 Vermont Forest Resource Plan

Department of Forests, Parks, and Recreation. Division of Forestry.

Susceptibility Potential for Asian Longhorned Beetle



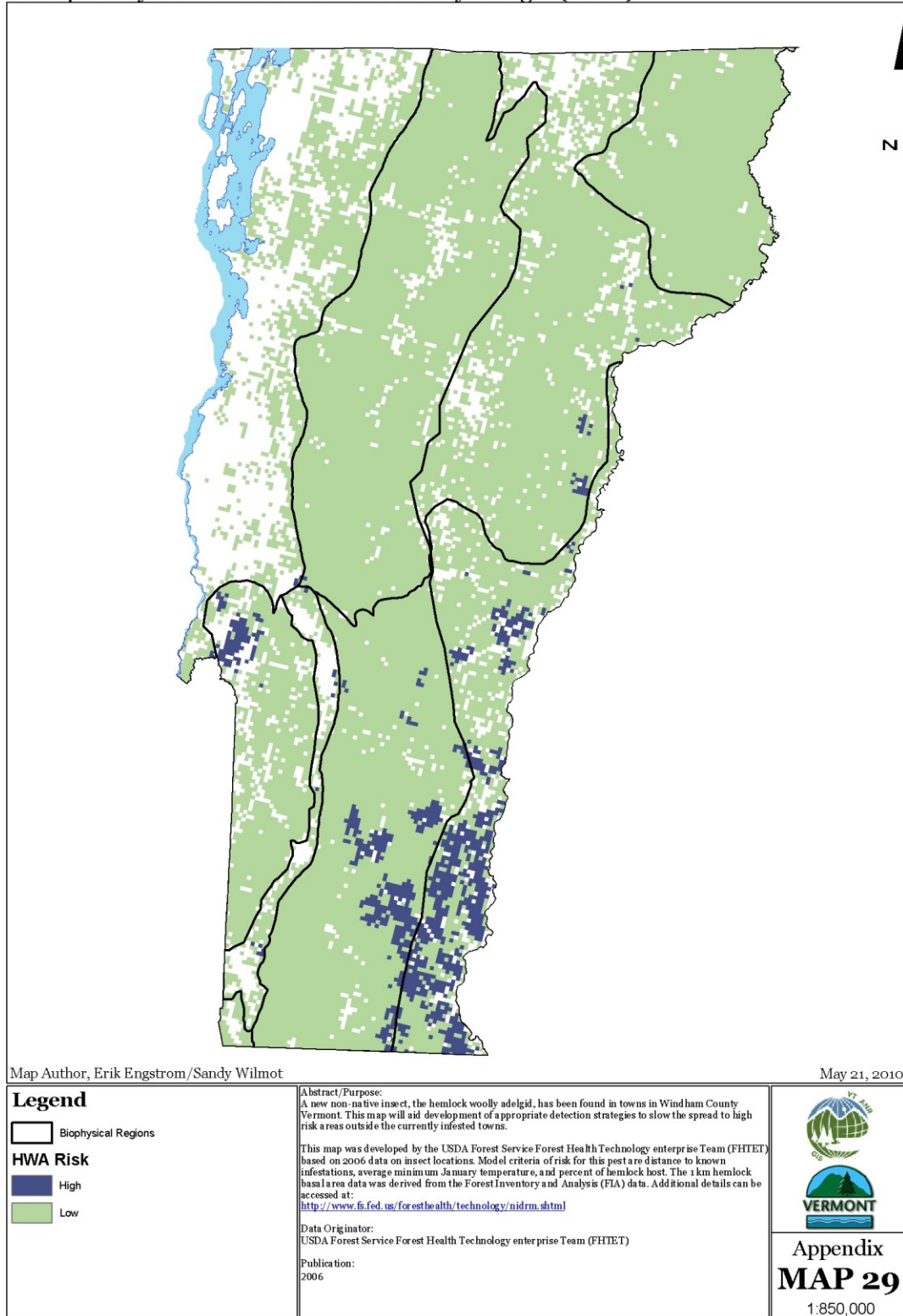
Map 28: Susceptibility Potential for Asian Longhorned Beetle

Links to text: [Priority Areas and Issues](#), [Non-Native Invasive Species](#)

2010 Vermont Forest Resource Plan

Department of Forests, Parks, and Recreation. Division of Forestry.

Susceptibility Potential for Hemlock Woolly Adelgid (HWA)



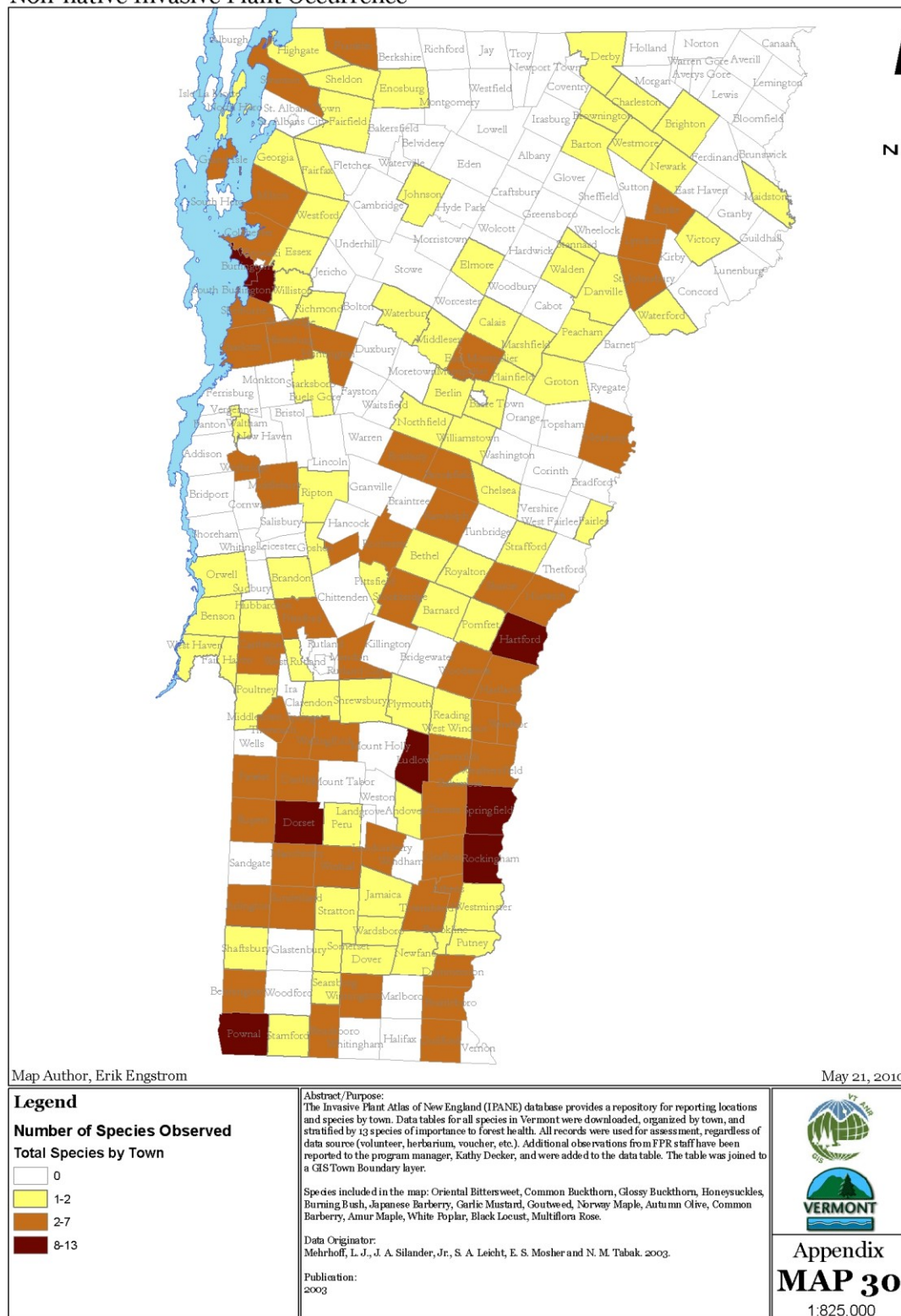
Map 29: Susceptibility Potential for Hemlock Woolly Adelgid

Links to text: [Priority Areas and Issues](#), [Non-Native Invasive Species](#)

2010 Vermont Forest Resource Plan

Department of Forests, Parks, and Recreation. Division of Forestry.

Non-native Invasive Plant Occurrence



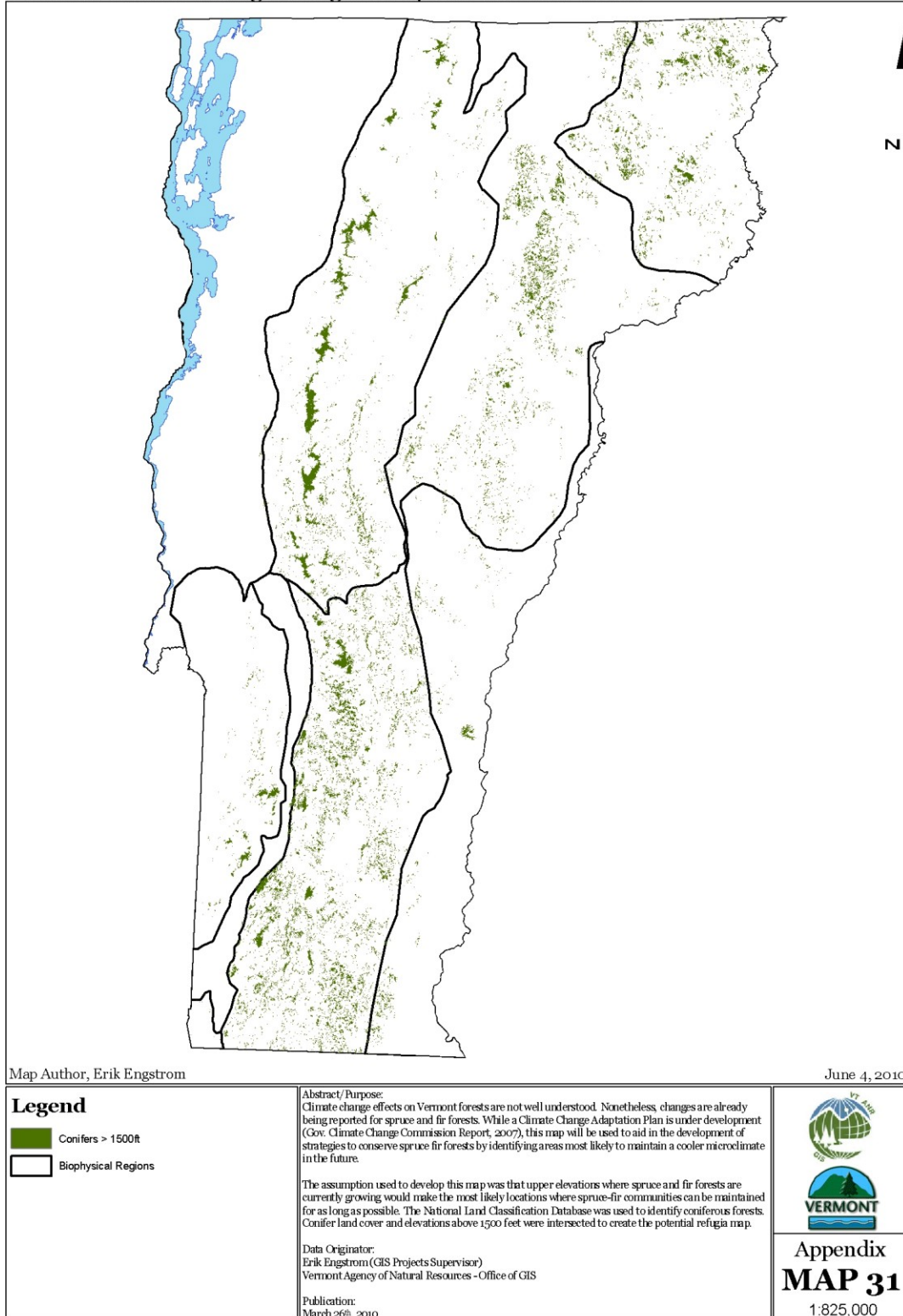
Map 30: Non-native Invasive Plant Occurrence

Links to text: [Priority Areas and Issues](#), [Non-Native Invasive Species](#)

2010 Vermont Forest Resource Plan

Department of Forests, Parks, and Recreation. Division of Forestry.

Potential Climate Change Refugia for Spruce and Fir Forests



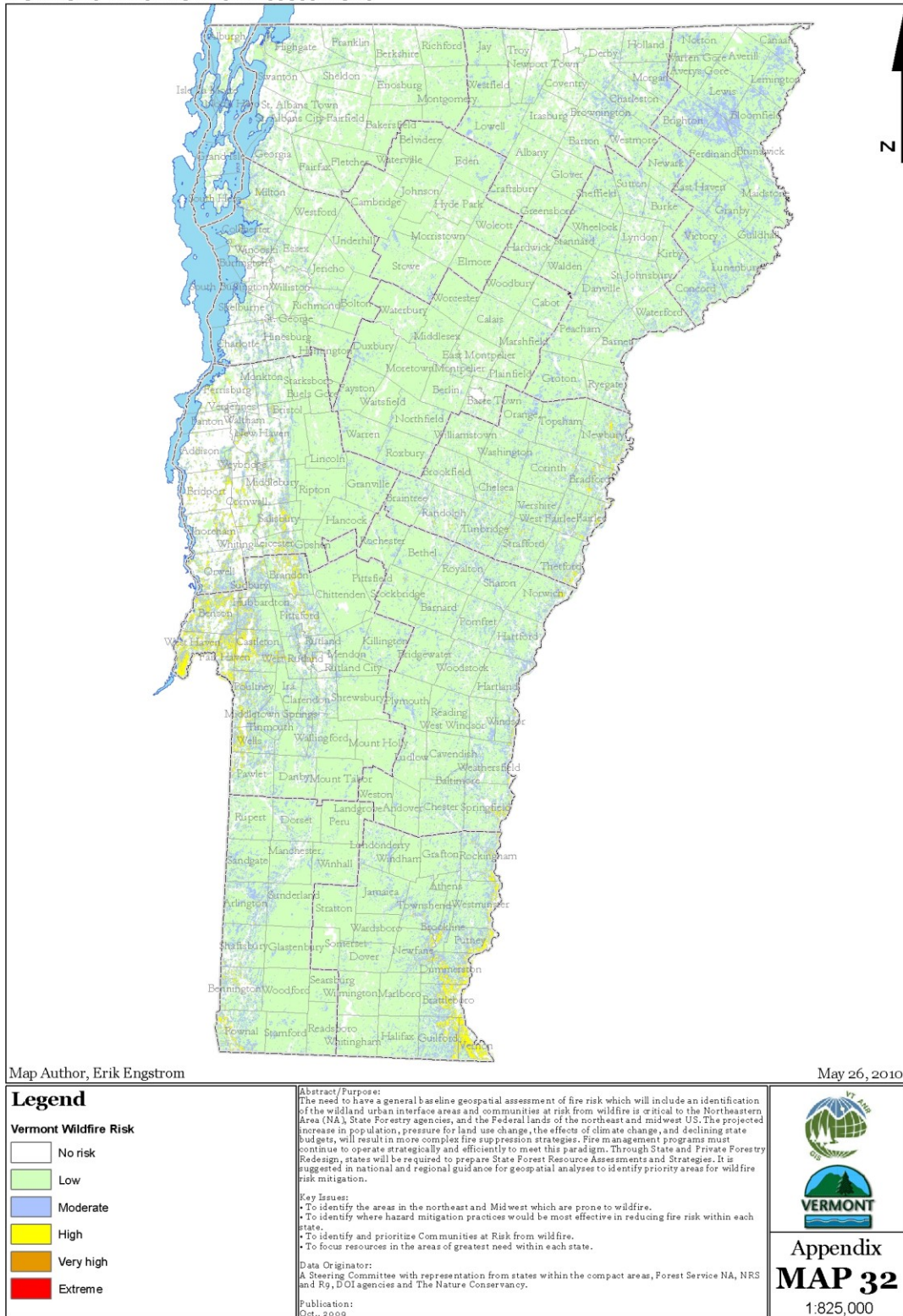
Map 31: Potential Climate Change Refugia

Links to text: [Priority Areas and Issues](#), [Climate Change](#), [Carbon Sequestration and Storage](#)

2010 Vermont Forest Resource Plan

Department of Forests, Parks, and Recreation. Division of Forestry.

Vermont Wildfire Risk Assessment

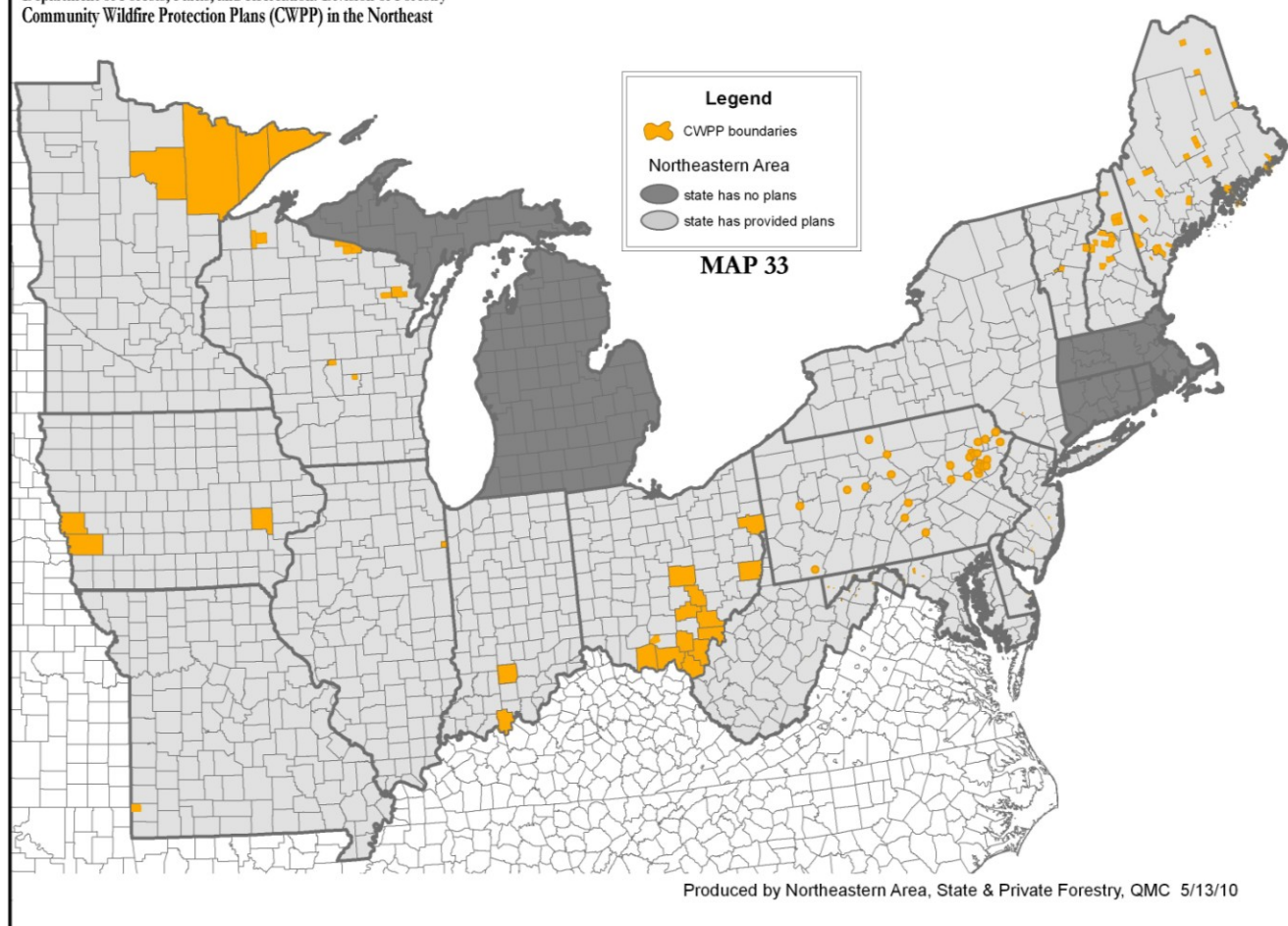


Map 32: Vermont Wildfire Risk Assessment

Links to text: [Priority Areas and Issues](#), [Forest Health Management](#)

2010 Vermont Forest Resource Plan

Department of Forests, Parks, and Recreation, Division of Forestry
Community Wildfire Protection Plans (CWPP) in the Northeast



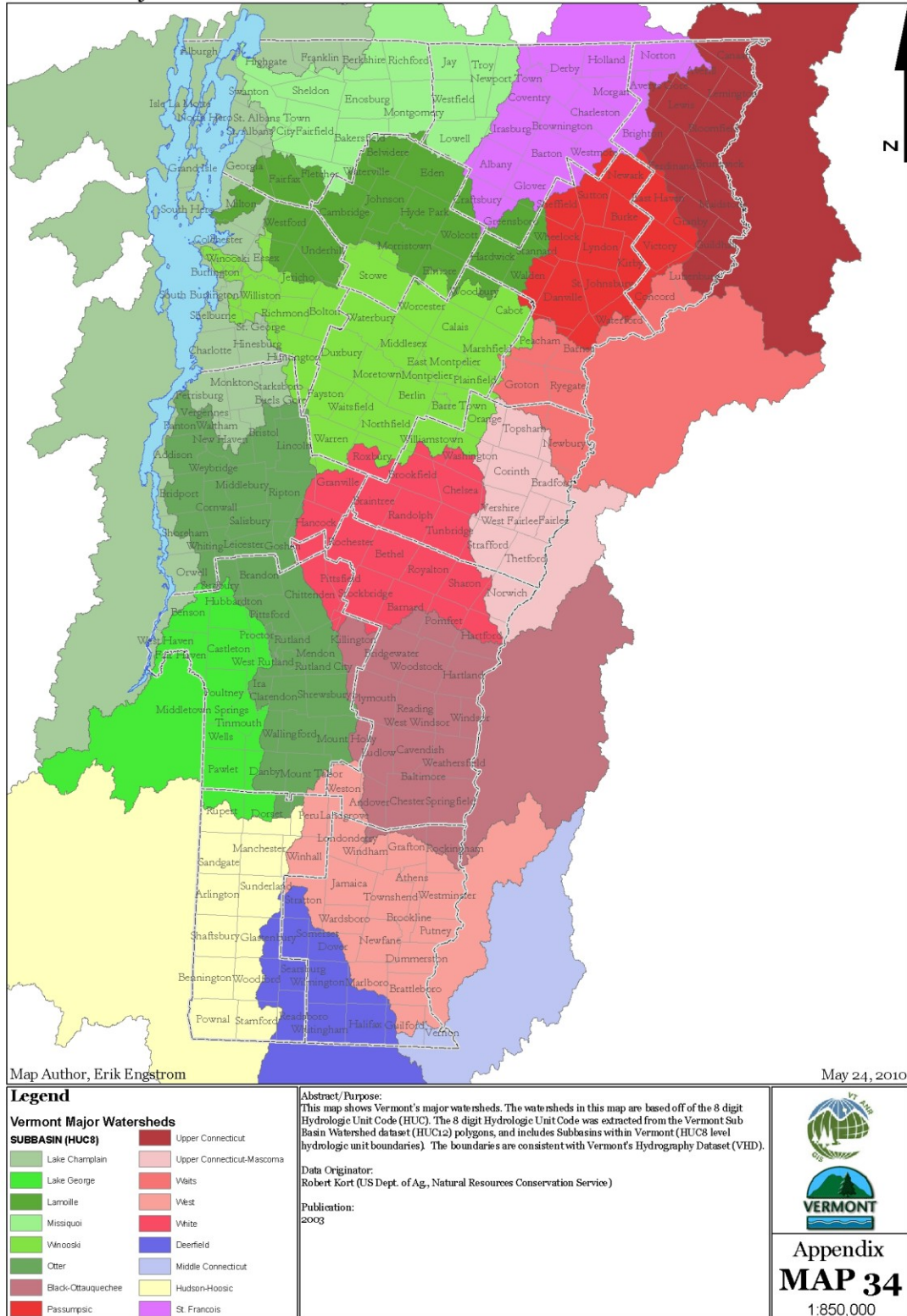
Map 33: Community Wildfire Protection Plans in the Northeast

Links to text: [Forest Health Management](#)

2010 Vermont Forest Resource Plan

Department of Forests, Parks, and Recreation. Division of Forestry.

Vermont Major Watersheds



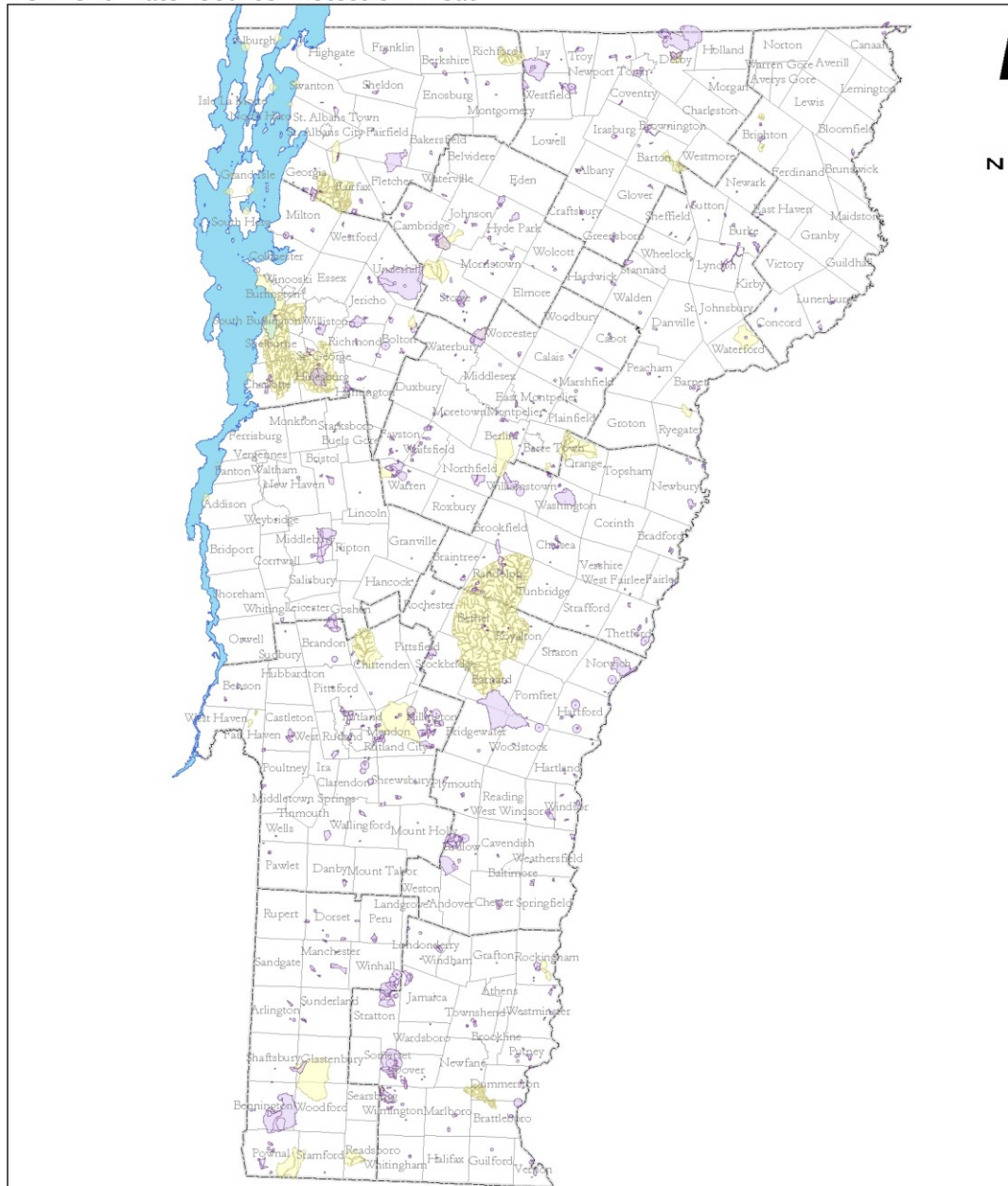
Map 34: Vermont Major Watersheds

Links to text: [Water Quality](#)

2010 Vermont Forest Resource Plan

Department of Forests, Parks, and Recreation. Division of Forestry.

Vermont Water Source Protection Areas



Map Author, Erik Engstrom

May 24, 2010

Legend

- Ground Water Source Protection Area
- Surface Water Source Protection Area

Abstract/Purpose:

This dataset shows wellhead and surface water protection areas. Source Protection Area (SPA) boundaries have been located on RF 24000 & RF 25000 scale USGS topographic maps by Water Supply Division (DEC) and VT Dept of Health (historical) personnel. Buffered SPAs are based on the point location of the water source(s). The accuracy of the SPA delineations depends to a large degree on the accuracy of water source locations and the surrounding topography. Many of the source locations were located on USGS topos from memory or verbal description. As a result, the inaccuracies associated with these locations (as much as 1000 feet) may have had an impact on the accuracy of the SPA delineation. SPA boundaries are approximate but are conservative enough to capture the area most susceptible to contamination.

Data Originator:

Erik Engstrom (GIS Projects Supervisor)
Vermont Agency of Natural Resources - Office of GIS

Publication:

Feb. 2009



Appendix
MAP 35
1:825,000

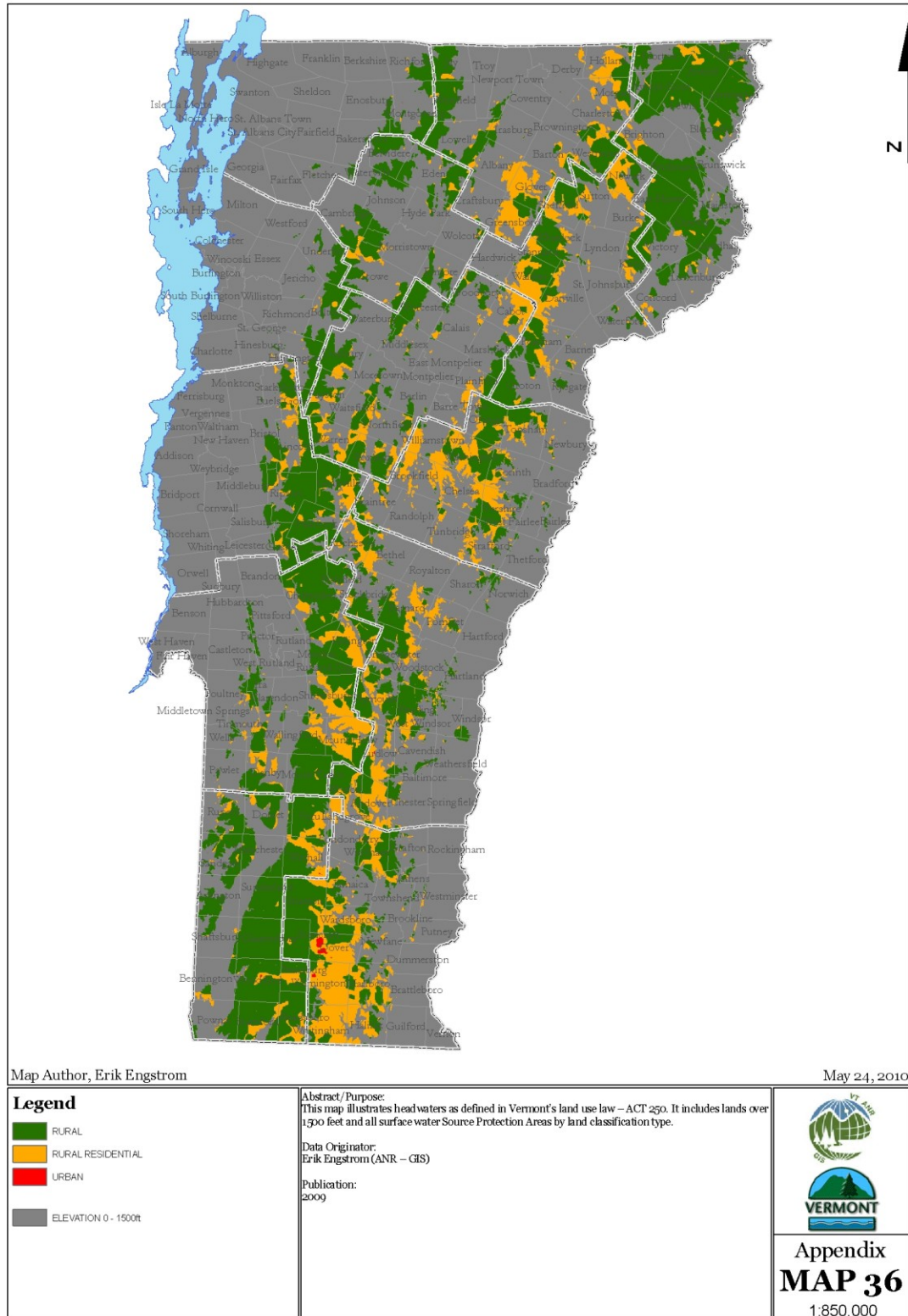
Map 35: Water Source Protection Areas

Links to text: [Rural Residential Landscape Zone](#), [Priority Areas and Issues](#), [Water Quality](#)

2010 Vermont Forest Resource Plan

Department of Forests, Parks, and Recreation. Division of Forestry.

Land Classification of Vermont Headwaters



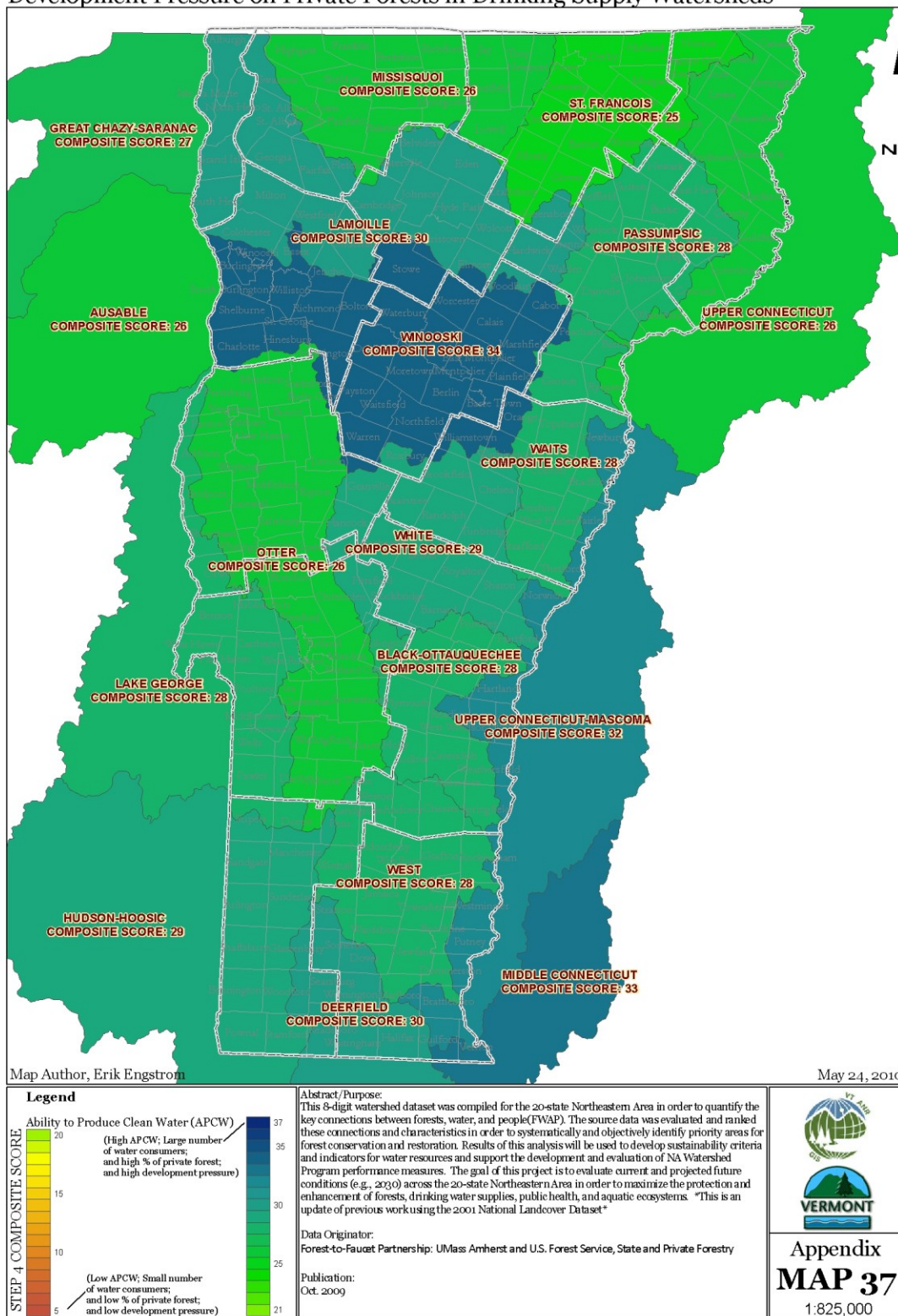
Map 36: Land Classification of Vermont Headwaters

Links to text: [Rural Landscape Zone](#), [Priority Areas and Issues](#), [Water Quality](#), [Regulatory Protection of Forest Water Resources](#)

2010 Vermont Forest Resource Plan

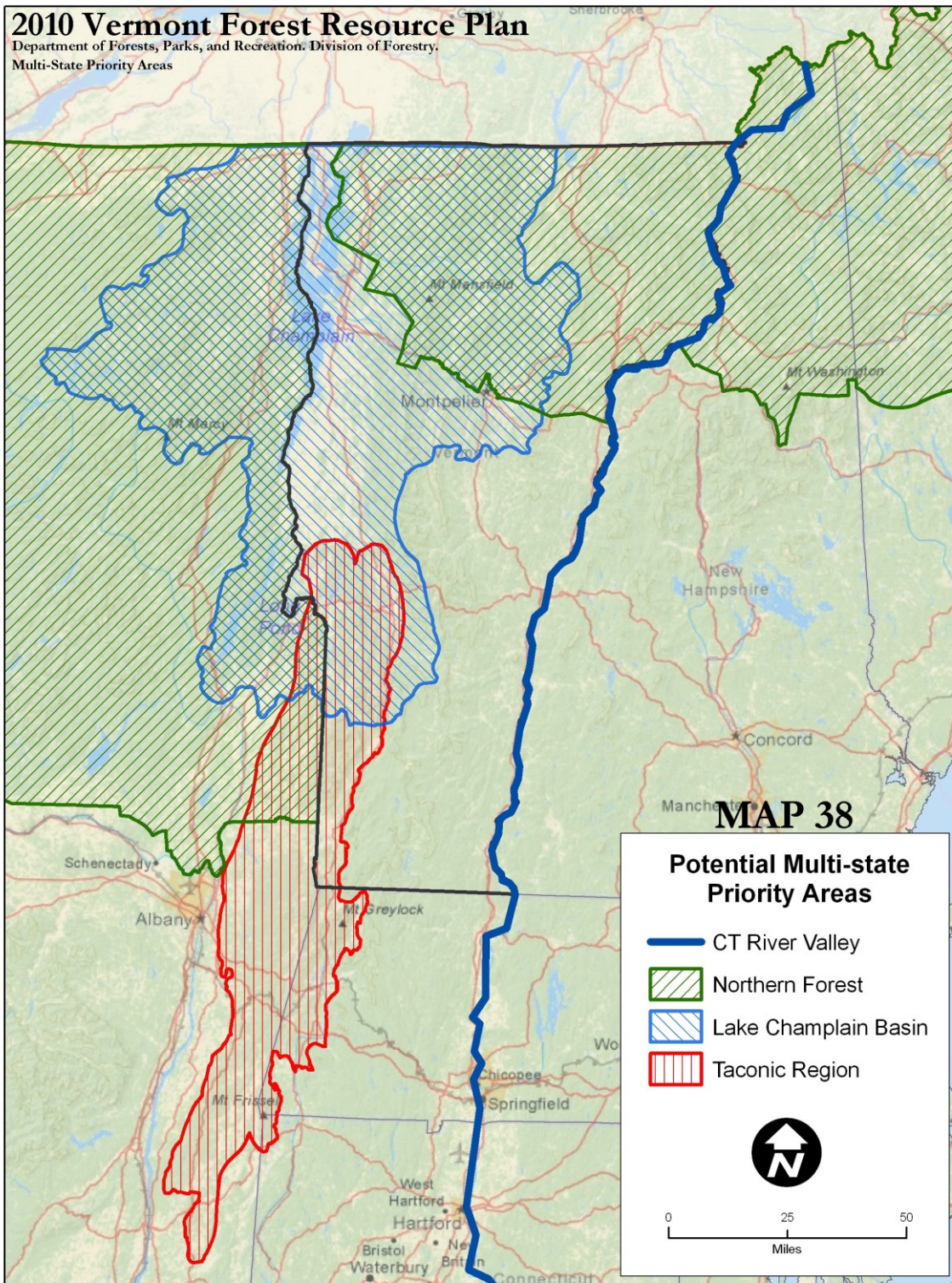
Department of Forests, Parks, and Recreation. Division of Forestry.

Development Pressure on Private Forests in Drinking Supply Watersheds



Map 37: Development Pressure on Private Forests in Drinking Water Supply Watersheds

Links to text: [Water Quality](#)



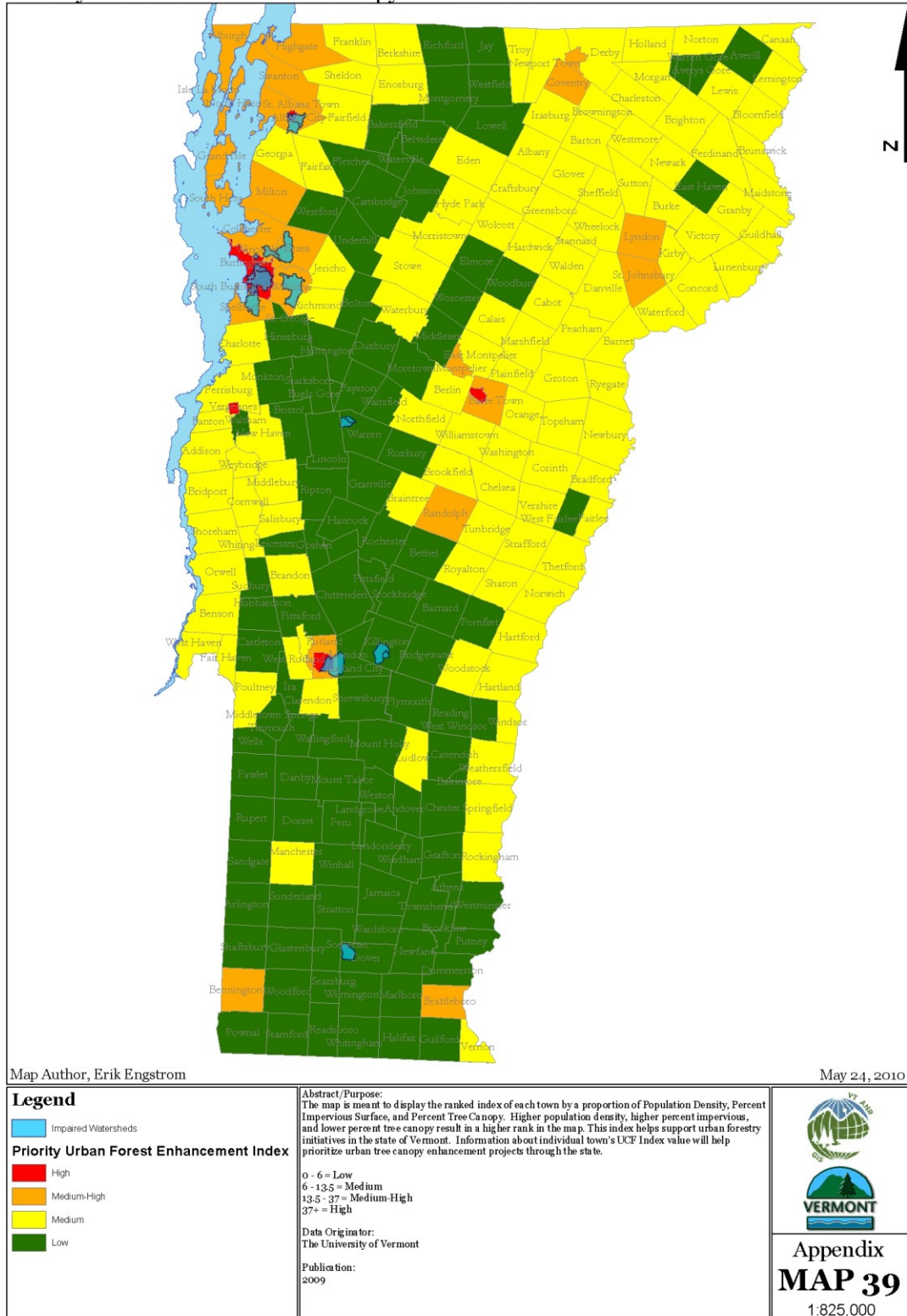
Map 38: Potential Multi-State Priority Areas

Links to text: [Priority Areas and Issues](#), [Multi-State Regional Landscape Priorities](#)

2010 Vermont Forest Resource Plan

Department of Forests, Parks, and Recreation. Division of Forestry.

Priority Areas for Urban Tree Canopy Enhancements



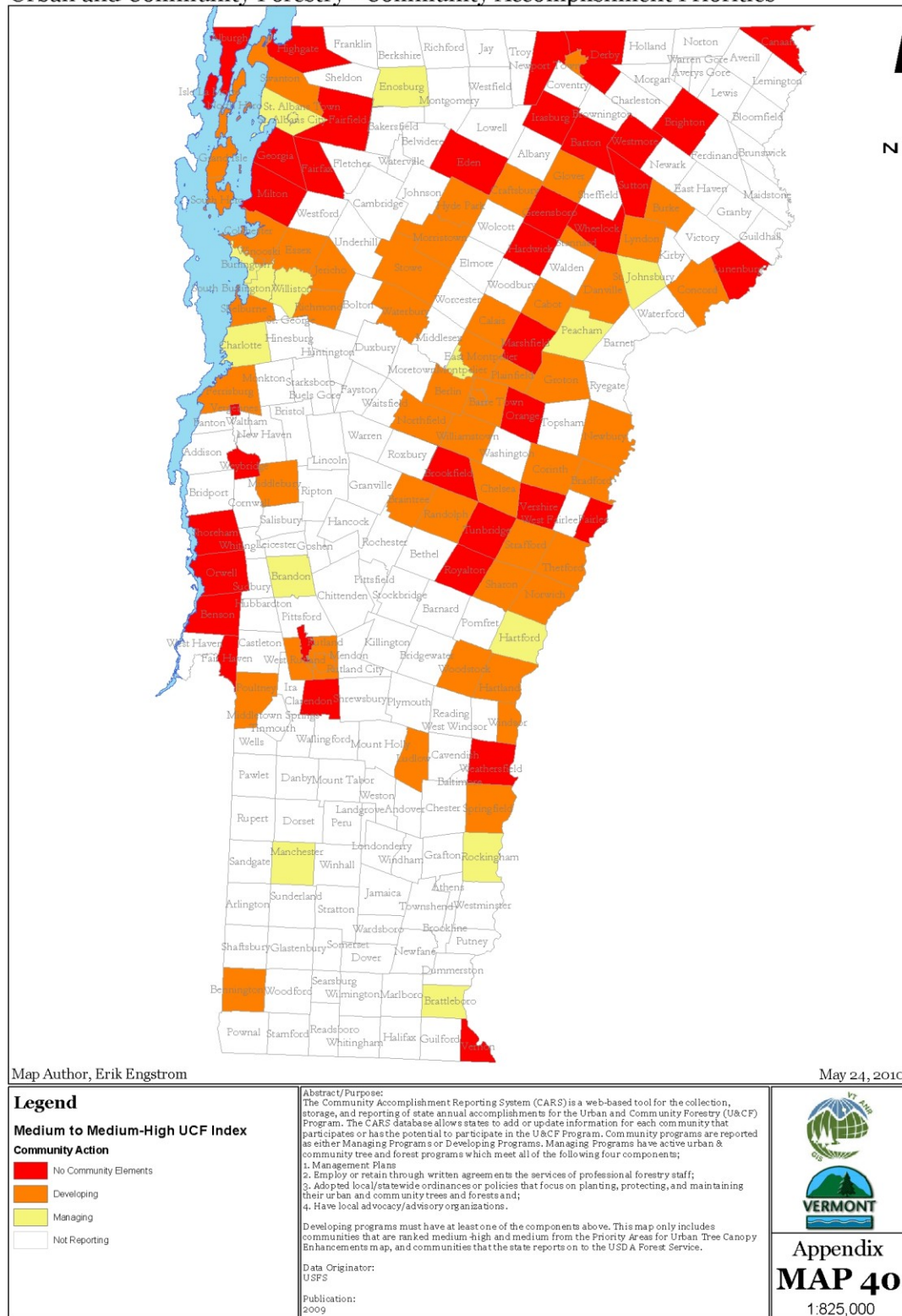
Map 39: Priority Areas for Urban Tree Canopy Enhancements

Links to text: [Urban Landscape Zone](#), [Priority Areas and Issues](#), [Water Quality](#)

2010 Vermont Forest Resource Plan

Department of Forests, Parks, and Recreation. Division of Forestry.

Urban and Community Forestry - Community Accomplishment Priorities



Map 40: Urban and Community Forestry - Community Accomplishment Priorities

Links to text: [Urban Landscape Zone](#), [Priority Areas and Issues](#)